

**Pharis  
Richardson**  
6lbs 2ozs Chub  
Knightingales Fishery  
at Stone

**FREE**



plus JUNIOR INFORMER pages 38-42, TROUT INFORMER pages 44-47, SEA INFORMER pages 48-54

Sandwich  
Coarse Fishery

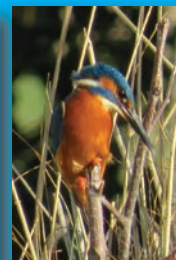
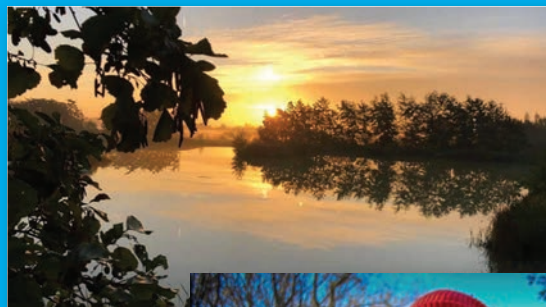


Tel: 07936 409912

email: [enquiries@sandwichlakes.co.uk](mailto:enquiries@sandwichlakes.co.uk)

[www.sandwichlakes.co.uk](http://www.sandwichlakes.co.uk)

Sandwich Ash Road (A257), Near Canterbury CT3 2DA







*Please support your local tackle shop!*

*Hello and welcome to the March 2022 issue of the Freshwater Informer!*

**W**e have made it through another Winter and we can take some comfort in knowing that this is the first month of Spring! Let us hope that someone tells the weather Gods that we have finished with the Winter and now want some warm sunshine to raise our spirits and take the chill from our bones!

In all fairness, the winter has been extremely mild and (to date!!!) we haven't experienced long spells of biting winds and icy conditions. We have had a few frosts, but otherwise have been lucky. I do hope that we aren't taken by surprise in a few weeks time with some unpleasant and unwelcome 'white stuff' messing up our plans! As I sit here writing my 'monthly rant' we are in the throes of Storm Eunice and the mainstream media are going in to a frenzy with their forecasts! I thought I had better get my 'rant' written up before power is lost and the house is reduced to matchwood! We do seem to be in for a few rough days, I might be better off going in to the fencing panel business!

Some unpleasant and unwelcome news was received during the middle of February in the form of a pollution incident on the Medway at Yalding. It appears that used engine oil and diesel was poured in to a drain which subsequently emptied in to our beloved River Medway. The Environment Agency attended very quickly and placed a boom across the water, but unfortunately some oil had already found its way downstream. A number of swans were contaminated with oil and the Swan Sanctuary were able to catch the swans and took them away for cleaning and a health check. I am unsure of the effect on the fish stocks and of any casualties.

The fishing has been generally tough for freshwater and sea anglers in recent weeks. Just as the plaice fishing was picking up, the weather turned and put pay to that! We also endured a number of days of extremely high air pressure which no doubt affected the coarse fishing. However, some nice catch reports were sent in and can be seen in this month's magazine.

I did put up a feedback survey on the magazine's Facebook page recently and many readers kindly took the time to answer. Every now and again I do like to ensure that I am bringing you the content that you enjoy reading and by carrying out a 'flash survey' I am able to gauge opinion. The vast majority of those that replied were completely happy with the varied content, even those that don't go sea fishing enjoy the 'salty content' of the Sea Informer section! A number mentioned that they would like to see less carp fishing content. The problem I have is that anglers don't often send in their silver fish catch reports and if I don't receive the content, I can't place it in the magazine! As stated, the vast majority are more than happy with the monthly offering and the 'Two Bobs' (Morris and Rolph) were high on the list of most read or first read articles each month. Bob Rolph will be starting a series of articles on Redmire Pool in May with some rare, never seen before photos, so that is something I am sure will be eagerly anticipated!

I am always happy to receive your feedback, so if you wish to comment, please get in touch, all the contact details are below.

*Enjoy your fishing!*  
*Barry Reed*

## The Freshwater Informer

6 Meadow Way | Wouldham | Rochester ME1 3GR

e: barnic@btinternet.com

01634 869317  
07722 025449



**COPY DEADLINE for APRIL 2022**

**MONDAY 21st March 2022 at 5pm**

The Freshwater Informer cannot accept responsibility for the quality of goods or services advertised in this publication. All views expressed are those of the contributors concerned. All images received are accepted as being true and accurate and as described.



We opened our doors at the end of 2016 in Sparrows Green, Wadhurst. Bowie is a very experienced professional barber, whether it's a traditional scissor cut or a modern fade, we cater to all styles and ages. Toddlers can enjoy a haircut in our vintage fire engine while adults can enjoy the refreshments and free WiFi. We have parking right outside and plenty more on the street, no appointment needed just come in and take a seat!

For opening times please see website

01892 783 130 • [www.bowiesbarbershop.com](http://www.bowiesbarbershop.com)



- MENS CUT £14
- CLIPPER CUT £10
- BOYS CUT (AGE 12-16) £12
- KIDS CUT (UP TO AGE 12) £10
- OAPs £12
- BEARD TRIM (FREE WITH HAIRCUT) £4
- PAYMENT BY CASH ONLY

Bowies Barber Shop  
Davies Place, Sparrows Green  
Wadhurst TN5 6TE



**HENFOLD BAIT & TACKLE Henfold Lakes, Henfold Lane, Newdigate RH5 4RW**

**TACKLE HIRE AND TUITION AVAILABLE**

**07956 043922**





WANT REGULAR  
TB//UPDATES?

Join our e-mailing list at  
[www.tacklebox.co.uk](http://www.tacklebox.co.uk)

🐦 tackleboxdartford  
f tacklebox83  
📷 tackleboxdartford

★★★★  
**WORLDWIDE  
MAILING**  
See website  
for details

**OPEN**  
MON TO SAT  
8.30AM - 6PM  
**THURS**  
9.30AM - 6PM

**WE CATER  
FOR START-UP  
THROUGH TO  
EXPERIENCED  
ANGLERS**

The  
**Tackle Box**



**LET'S GET  
ANGLING**



**JUNIOR BUNK  
SLEEP SYSTEM**

**IN  
STOCK  
NOW**

**£193.99**



**JUNIOR 4 SEASON  
SLEEP SYSTEM**

**IN  
STOCK  
NOW**

**£189.99**



**BANKLIFE  
CHAIR**

**IN  
STOCK  
NOW**

**£59.99**

### ← FOX FRONTIER BIVVY

Fox Frontier XD Bivvy with Inner Dome	22203	£689.99
Fox Frontier XD Bivvy	22201	£599.99
Fox Frontier X Bivvy	22197	£549.99
Fox Frontier Bivvy	22194	£499.99

### SEA FISHING →

DAM Tele Surf Tri Pod	23465	£54.99
Tronix Pro Large seat Box	20685	£39.99
Tronix Pro Mini Seat Box	15457	£27.99



**EXCELLENT  
SOCIAL OR  
DAY CHAIR**

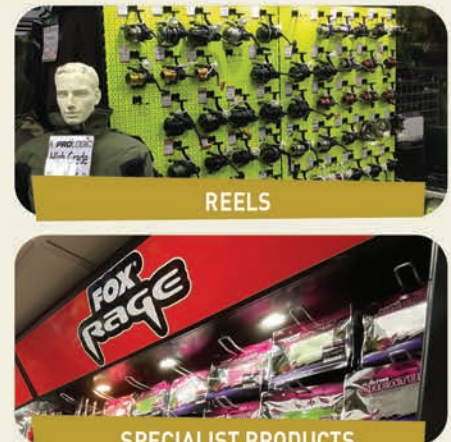
**NEW PRODUCTS // TOP SELLERS // TB FAVOURITES // HOT OFFERS // LARGE CAR PARK**



**WINTER FOOTWEAR**



**NEW WINTER CLOTHING RANGES**



**REELS**

**SPECIALIST PRODUCTS**



**BAIT STORAGE FREEZERS**



**BITE ALARMS DISPLAY WALL**



**ET  
PRODUCTS**

**DRENNAN**

**BAITBOX**  
Feed your passion

**FOX  
RAGE**

**PREDATOR PRODUCTS**

**0%  
FINANCE**

**SIMPLY SPREAD THE COST  
AVAILABLE NOW**

**CLICK &  
COLLECT**

**RESERVE ONLINE,  
COLLECT IN-STORE**



**TB//SERVICE  
DEPARTMENT**  
SERVICING • REPAIRS  
• ALTERATIONS

**FREE  
DELIVERY\***  
ON ORDERS OVER £100

\*Standard Delivery - Mainland UK only

**CUSTOM ROD BUILDING  
AND REPAIR SERVICE.**

Our in-house rod building service allows you to create the rods of your choice with the help of our rod builders. **Call the shop to discuss your requirements.**

**CUSTOM  
BUILD  
AVAILABLE**

**MAIL ORDER SERVICE - LOCAL OR NATIONAL PLEASE TEL 01322 292400 OR ORDER ONLINE AT [WWW.TACKLEBOX.CO.UK](http://WWW.TACKLEBOX.CO.UK)**



THE TACKLE BOX, 251 Watling Street, Dartford, Kent, DA2 6EG. **EVERYBODY'S WELCOME!**



**Hartley Lands Fishery** Cranbrook, Kent



**Tricklebrook Fishery** Five Oak Green, Kent



Adam - 19lbs 9ozs New Lake



Adam - 22lbs 12ozs New Lake



Steve - 22lbs Old Lake



Alex Ashton - 2lbs+ Match Lake



Jack - 25lbs



Kieron Smith - 37lbs Old Lake



Mark - 25lbs





PRICES

DAY TICKET X2 RODS - £15  
DAY TICKET X3 RODS - £20  
24 HOUR TICKET X2 RODS - £25  
24 HOUR TICKET X3 RODS - £30  
36 HOUR TICKET X2 / X3 RODS - £40 / £50  
48 HOUR TICKET X2 / X3 RODS - £50 / £60

NEW LAKE NOW OPEN  
ALL LAKES DISABLED FRIENDLY!



TRICKLEBROOK FISHERY

This fantastic coarse fishery consists of two very well stocked lakes.

A 4 acre specimen lake stocked with big Catfish up to 50lbs, huge Carp up to 40lbs, big Perch up to 6lbs and beautiful Roach over 3lbs. And a 1 acre match fishing lake teaming with a variety of species weighing up to 28lbs.



find us on facebook and instagram  
[FACEBOOK.COM/TRICKLEBROOKFISHERY](https://www.facebook.com/tricklebrookfishery)



Open from 7am 365 days a year!

A UK CARP TOP 100 FISHERY - BOOK NOW!

[tricklebrookfishery.co.uk](https://www.tricklebrookfishery.co.uk)

TEL 07743 955812 | 01892 835453 | EMAIL [info@tricklebrookfishery.co.uk](mailto:info@tricklebrookfishery.co.uk)

Tricklebrook Fishery | Colts Hill | Five Oak Green | TN12 6SH

Telephone bookings are to be paid in advance and are non-refundable • Credit and Debit cards now accepted

LAKE RULES

1. A TICKET MUST BE PURCHASED BEFORE FISHING

2. ALL NETS, UNHOOKING MATS AND WEIGH SLINGS MUST BE DRY BEFORE DIPPING IN THE DISINFECTANT BATHS

3. NO NUTS OR PARTICLE

4. BOILIE AND PELLET ONLY FOR SPECIMEN AND BACK LAKE - ALL BAIT WILL BE INSPECTED

5. ALL FISH MUST BE RETURNED TO THE WATER AS QUICKLY AS POSSIBLE FOLLOWING CAPTURE. NO STANDING. FISH MUST BE HELD LOW OVER A MAT/CRADLE FOR PHOTOGRAPHS

6. MINIMUM 15LB LINE AND NO BRAIDED MAIN LINE

7. NO SACKING OR RETAINING OF FISH IS PERMITTED. THE REMOVAL OF FISH FROM THIS VENUE WILL BE VIEWED AS A CRIMINAL ACT

8. EACH ANGLER MUST HAVE A MINIMUM OF 42 INCH LANDING NET AND A LARGE PADDED UNHOOKING MAT/CRADLE REGARDLESS OF TARGET SPECIES ON SPECIMEN AND BACK LAKE

9. BARBLESS HOOKS ONLY

10. NO LEAD CORE, NO FUSED LEADERS OF ANY KIND INCLUDING SAFEZONE
11. NO FIXED LEAD RIGS. ALL LEADS MUST PASS FREELY OVER LEADER KNOTS. RIG CHECKS WILL BE CARRIED OUT

12. RECREATIONAL DRUGS WILL NOT BE TOLERATED - IMMEDIATE BAN FOLLOWS

13. PLEASE INFORM FISHERY MANAGEMENT OF ANY SNAGGED TACKLE OR FISH

14. ANY FISH OVER 28LB MUST BE REPORTED TO BAILIFF

15. NO DOGS ALLOWED

16. BARBECUES ALLOWED IF OFF THE GROUND

17. NO BAIT BOATS

18. FAILURE TO COMPLY WITH ANY OF THE RULES WILL RESULT IN BEING ASKED TO LEAVE AND/OR BANS WHERE APPROPRIATE AND NO REFUND WILL BE OFFERED

19. TRICKLEBROOK IS NOW OPERATING A ZERO-TOLERANCE POLICY TO ANY ACTS OF AGGRESSION OR ABUSE TOWARDS ITS BAILIFFS AND STAFF

20. ALL RUBBISH TO BE TAKEN HOME

CCTV IN OPERATION  
OVER WHOLE SITE

OPENING TIMES  
SUMMER 7AM - 7PM WINTER 7AM TO DUSK





**Beaver Fishery** Lingfield, Surrey

**PLEASE NOTE : To fish Snipe Lake, Westlake (Formerly Tuscany Lake) or Daughters Lake there are certain tackle requirements in force. Please call or look on our website at [beaverfarmfishery.co.uk](http://beaverfarmfishery.co.uk)**

Well, as I write this report we are in the aftermath of the horrid Storm Eunice and boy did she let us know she had arrived. I have been here since 2007 and I have never witnessed a storm quite like Eunice. She certainly left a trail of destruction in her wake and we are currently working on the fishery lake by lake picking up the pieces. We did suffer from trees in some lakes both big and small, trees across lake access roads and a myriad of branches both on the ground and in the water. It will be a slow process but hopefully we will have it all cut and cleared as soon as possible. We did have some catches before the storm so here are a few:

**Snipe Lake** saw **Ian York** bank a 21-10 common and then another common which was his new **PB** at 24-04, **Luke Auger** banked a lovely mirror of 20-08, **Gerry Fowler** finally banked his first Snipe Lake carp in the form of a 21-04 mirror, **Al Randall** had a 19-05 mirror, **Jason Sole** banked another mirror at 21-04 and **Bradley Garner** continued his fine form when he banked mirrors at 22lbs and 23-04 then a new common **PB** at a decent 30lbs exactly.



Bradley Garner - 22lbs



Bradley Garner - 23lbs 4ozs



Bradley Garner - 30lbs



Ian York - 21lbs 10ozs



Ian York - 24lbs 4ozs



Luke Auger - 20lbs 8ozs



Jason Sole - 21lbs 4ozs



Dan Caunt

**Westlake** has had a few day anglers on trying their luck for a winter cat, but without much success as the water has been holding the cold temperature. The first cat banked this year was a low 20 caught by **Dan Caunt**.

**Jeff's Lake** has, as usual, been producing plenty of fish. The day anglers that have fished it have seen some good results with plenty of F1's and some cracking bream. We have even seen a tench banked too. **John Howe** is a typical example of this when he banked 12 F1's to 6lbs.

**Moat Pond** has been a little hit and miss but Jason Hills banked six nice carp and **Terry Edwards** banked a couple of 10lbbers on his day session too. We have seen day anglers getting amongst the silvers and some nice bream have been banked too.



Terry Edwards - 13lbs



Terry Edwards - Moat Pond



Hugh Rochfort

**Daughters Lake** has been fishing quiet as we haven't seen too many anglers chancing their arms on there but **Hugh Rochfort** braved it and banked a nice mirror of 11-04.

**Maze Lake** has seen day anglers getting amongst the F1s and some good bream to 6lbs being banked.

**Majors Lake** saw **Terry Edwards** getting involved in his carp campaign when he banked a chunky F1, a couple of low double mirrors and a 14-04 ghost mirror as well as a bream and a tench, **Scott Keats** banked a 17-04 pike, **Norman Epps** had a 13lbs pike and a lovely 15-02 mirror, **Luke Pickett** banked a 14lbs ghostie on an afternoon session and **Lucas Tricker** banked 3 decent bream and a 16lbs common.

We both look forward to seeing you all on the bank very soon.



Norman Epps - 13lbs



Terry Edwards - 14lbs 4ozs



Terry Edwards - Majors Lake



Norman Epps - 15lbs 2ozs



Luke Pickett - 14lbs





# MFC

## Outdoor Stores

Here at MFC Outdoor Stores we have a huge range of fishing Supplies. From Nash to Middy we have a wide range of different brands for you to choose from. We also have a large range of Air Rifles and Workwear for those who are interested.



[WWW.MFCOUTDOORSTORES.COM](http://WWW.MFCOUTDOORSTORES.COM)

Phone: 01323 846883

Email: [info@mfcoutdoorstores.co.uk](mailto:info@mfcoutdoorstores.co.uk)

9 Station Road, Hailsham, East Sussex, BN27 2BE



## Claygate Lakes Claygate, Marden, Kent

Well like most fisheries, we have been busy carrying out maintenance works to the lakes, trees being cut back, swim repairs as well as fresh bark on swims. We have netted all three lakes removing nuisance fish and making way for new stock fish, pictures will be in next months Informer.

It has been nice to see some of our regulars, along with some new faces, braving the weather and having a dabble here at Claygate.

**Amy Lake** **Kev Wilson** decided to use a jig on lake Amy for a couple of hours whilst carp fishing and had a few perch around the 2lbs mark. **JD** also had a couple of perch just shy of 2lbs along with a couple of beauties from Lake Amy.

**Sophie Lake** Bream are starting to show in matches with guys having 30-40lbs in their nets, as well as a few tench up to 8.5lbs still coming out.

**Eva Lake** Fish still shoaled up, but if you can find them, pleasure anglers are having up to 100lbs of fish with the odd double as well. Sweetcorn still seems to be good for a bite.

People are regularly enquiring whether we do a membership, so we will be working something out for this season. More information together with costs in next month's Freshwater Informer.



## Elphicks Fisheries Horsmonden, Kent



Adam Honeysett - 29lbs North Lake



Ant Page - 35lbs North Lake



Tom Wise - 29lbs Prairie Lake



Scott Baldwin - Westend Lake



Ted Tahir - 33lbs 3ozs North Lake



Tom Wise - 27lbs Prairie Lake

## Elphicks Fisheries



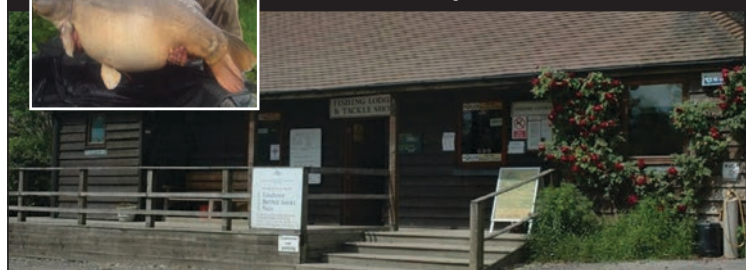
Elphicks has been designed and built with the modern angler in mind. We have 7 lakes available for day ticket and session fishing. Each lake has it's own parking within easy reach of the swims and all swims are 'all weather' - either built of Astroturf, stone or bark. Please contact the fishery for further information on any of our lakes.



**Elphicks Fisheries** Spelmonden Road  
Horsmonden, Kent TN12 8EL

Tel: **01580 212512**

email: [info@elphicks-fisheries.co.uk](mailto:info@elphicks-fisheries.co.uk)



[www.elphicks-fisheries.co.uk](http://www.elphicks-fisheries.co.uk)



Bernie - 46lbs 1oz North Lake

## Iden Wood Fishery



Tel/Fax: Andy Ashdown

**01797 280180**

Mobile:

**07906 232225**

5 secluded lakes set in 60 acres of woodland, containing Carp to 30lbs, Tench to 5lbs, Bream to 9lb plus Roach, Rudd and Chub

**Vehicle access/night fishing allowed / match bookings taken**

Spring Lodge | Iden Wood Fishery  
| Coldharbour Lane | Iden | Rye |  
East Sussex | TN31 7UT



**Day ticket:****£10 for x1 rod****£15 for x2 rods****24 hours:****£30 for x2 rods***(formerly Tanyard Fishery)***Day and night  
fishing available**

A choice of  
three carp  
and catfish  
lakes  
and one  
carp-free  
lake!



Families and accompanied  
young anglers very welcome

# [www.latchettslakes.co.uk](http://www.latchettslakes.co.uk)

Latchetts Lakes are set in a tranquil aquatic landscape where experienced and novice anglers alike can find a lake to suit their needs.

With four lakes to choose from including a carp free lake, anglers can fish for a range of fish including common and mirror carp, catfish, crucians, koi, bream, tench, roach and many more species.

We have toilet facilities for ladies, gents and disabled and a washing-up area for longer stay anglers.

**We are open from 7am to 7pm****365 days a year****No pre-booking needed - just turn up and fish****07912 876732 or 07793 654174**email: [info@latchettslakes.co.uk](mailto:info@latchettslakes.co.uk)

@latchetts lakes

**Latchetts Lakes Tanyard Lane Furners Green Uckfield TN22 3RL**



Mousehole Lakes Paddock Wood, Kent



Great report from Beaver Fishery!

Well done to Scott Carter added to his tally on Snipe Lake when he banked 'Hayley's Mirror' at an impressive 37lbs. A very well deserved personal best and a fish that he has been after for a very long time. Happy Days at Beaver Fishery.



Joe finds some nice roach!

You may remember Joe from the front cover of the January magazine with his wonderful perch!  
Joe has been back on the bank and he found some lovely roach:



"I recently fished for pike and perch for the majority of the day but with no luck. Just before last light I decided to switch over to a light ledger set up with a few maggots on a size 16 hook and within an hour I had three roach well over a 1lb."

Roy is in 'Love'!

Great report from Roy Brett who had a great day at Lovelace Fishery recently:  
"Well what a grand session that was on the Love! I ended up with nine fish, albeit five were under 8lbs, but I did have four good doubles at 12lbs, 15lbs, 16lbs and to top it off a 24 pounder!! All on maggots. Now that's a good day!"





# BODLE angling

Opening times:  
Mon-Fri: 8.00am to 5.30pm  
Sat: 8.00am to 12.30pm  
Sunday: Closed  
Bank Holiday: Closed



check out our Facebook and Instagram  
for the latest news and competitions!

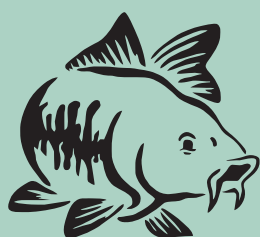
CUCKFIELD ROAD

BURGESS HILL RH15 8RE

**OUR NEW WEBSITE  
IS HERE**

**www.bodleangling.co.uk**

**01444 247757**



## Shirkoak Fishery and B&B



Since taking over in November 2019 we have removed some of the smaller fish and added some big scaly mirrors and pike as our predatory fish, this is part of our ongoing stocking program.

**OAP  
TUESDAY  
£10  
incl. bacon roll!  
Pre-bookings  
only**



We can also offer food delivered to your swim, our full English breakfast is proving extremely popular!



Fishing prices start at £12 for 2 rods for 12 hours.



### FISHING HOLIDAYS & SHORT BREAKS

We can accommodate up to 7 guests in our exclusive guest suite.



*Why not enjoy a stay at our beautiful Kent farmhouse*



3 en-suite bedrooms, private Farmhouse kitchen and dining room, sitting room with inglenook fireplace, tennis court and gardens. Full English breakfast is included in the price of your stay. Please call for further details and availability.

### Lakeside Wedding Venue

*Let us host your wedding reception at Shirkoak Farm*



We are able to offer a full wedding package that includes exclusive hire of the lake, gardens, accommodation in the guest suite, a full catering service and on-site florist. Please call for further information.



**Shirkoak Fishery, Bethersden Road, Woodchurch, Ashford TN26 3PZ**

Follow us on Facebook  
'Shirkoak Fishery'  
for regular updates



**www.shirkoakfarm.com**

For more information please call  
Hugh on **07973 410973**



**Sam Cox, who you will know as one of our regular column writers, sent me this letter and raises some very interesting points!**

## Letters to the editor



"Dear Barry, There are millions of anglers in the UK, and globally angling, is by far the most popular participation sport. Angling generates more than its fair share of revenue to the UK economy, yet despite angling's popularity, and its value, anglers here in the UK seem to be getting a rough deal. Unlike other countries, where anglers' voices are heard and anglers are represented by bodies and organisations that understand angling's needs and worth, our voices are quiet, and fall on deaf ears.

When compared to the representation enjoyed by our American friends, ours here in the UK seems flaccid, and mostly unable to rise to the occasion.

It has come to light that our river systems are regularly used as a dump for untreated sewage and that this is having disastrous effects on the aquatic eco systems. This coupled with agricultural 'run off', causing nitrates to also enter our river systems is making the future look very bleak. Any sane person would think that angling representatives would be screaming from the roof tops, but no, it was the Rivers Trust to their credit that had their voices heard on the morning's news.

The Norfolk Broads is a National Park and also very popular with anglers. Anglers contribute a lot of money to the local economy. But unless you're local or regularly visit the area you will not know that thousands of fish are being killed by the large salt tides that effect this area. I have been regularly fishing the Broads for around ten years, and the fish stocks are noticeably in decline. Our representatives are unheard regarding this issue, it's not made national news, it's not caught the attention off the general public.

There are far too many ecological disasters effecting our rivers and coasts for me to list in this brief article, but due to our representation being so limited most of the public and indeed most anglers are blissfully unaware off the impending doom.

UK sea anglers have lost and are losing much off their access to fishing marks around our coast. Many local authorities don't seem to want anglers fishing on their patch, however much revenue they are adding to the local economy. Most recently anglers almost lost complete access to Dover's Admiralty Pier. However, limited access was regained by some very polite softly spoken angling representatives. How much more could have been achieved if angling used all the lead in its pencil?

The state of our coast lines and seas is well documented, not by angling representatives, no, but by surfers and other groups that are dwarfed in numbers compared to angling. The total collapse of the cod fishery in the Southern North Sea is arguably the biggest crime to be inflicted on UK sea angling of our times, yet I hear nothing on the news. Our sea fishery has been so badly managed for so many decades, one must wonder if it can ever recover. Commercial fishing is worth around 950 million quid, obviously this includes species that hold no interest to anglers such as shellfish. So, its true value on a fish for fish basis is far less, and yet its representatives are very well heard and have the ear of many of the powers that be.

Trendy chefs and ego eccentric politicians are regularly seen on our TV screens spouting off about the plight of our commercial fisherman, watched and heard by millions. But where are the voices of our angling representatives? I would wager that most are very quietly, and very politely going about their business unnoticed by most, afraid of rocking the political boat.

Undoubtedly gentle polite negotiation can get some things done, notably restrictions on anglers regarding our bass fishing is one of the biggest achievements of our starry eyed representatives. Arguably anglers should not need to bother themselves with having good representation as it's the job of Government to ensure our rivers are well kept and our seas are well managed. We should just be able to head off to our local river or beach in the confidence that the fishery is well managed. Unfortunately, this is not the case. Some will argue that the information is out there if you look, well if angling representatives had the class of the commercial fisherman's representatives, then the plight of anglers would be a commonly known issue.

Maybe its lack of membership, especially when it comes to sea anglers, that is to blame for the lack of clout. My argument would be that they just aren't selling what sea anglers want to buy. I have found that most sea anglers don't know who represents them. They are unaware that possibly roach anglers are affecting policy on bass angling, or that their favourite fishing spot could become a no take zone.

Or could it be that some of the funding for our representatives comes from the freshwater fishing licence issued by the Environment Agency, which incidentally is a department of DEFRA, and DEFRA is part of Government, hardly a great track record when it comes to fishery management! Maybe an increase in membership could tip the balance and steer our representatives in the directions that are important to us, but somehow, I doubt it. Maybe it is time for angling to take its gloves off, we are many in numbers and generate enough revenue to surely deserve more clout than is currently afforded us." **Kind regards, Sam Cox**

**Regular correspondent, Robin Piper, sent me this letter from his latest angling adventure:**

"Dear Barry, Now that the winter months have dragged on a bit, I find I need to consult the weather forecasts more often as none of us are getting any younger! If the forecast is looking bad, I turn to the wife to see if she has anything indoors that needs doing! A crafty ploy to keep in her good books!

When I was a 'total angler' the thought of venturing out when it was dark, cold and wet did not concern me at all, all I was concerned with was the fact that I was off fishing! I could carry all my gear in those days and the thought of the time and effort using public transport was of no consequence. I well remember sitting on trains surrounded by commuters who would give me some strange looks, however, on the return journey there were not many commuters who were quick to sit next to me as I had that faint aroma of fish and groundbait, not to mention the muddy boots, but did I care, not a chance as I had done what I wanted to do and had caught some fish and had made a full day of it. However, that was a long time ago now when I was young and very keen!

With the latest tackle available and not just the rivers to fish, there are unlimited amounts of waters to fish on a day ticket and now I am retired I can pick and choose when I go depending on the time of year and the weather conditions. Some days it is a spur of the moment decision, I get up, the weather is fine and off I go!



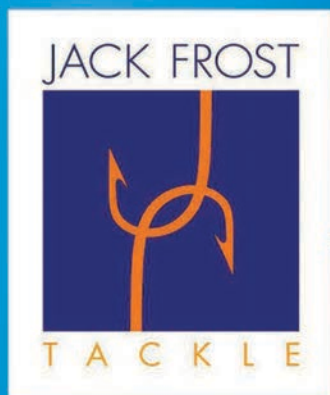
With the weather beginning to warm and the fact that my basic tackle consists of two 10' leger rods, a soft tipped rod and a slightly stiffer one, two rod rests per rod, net and handle and two new reels, I can now travel fairly light. I tend to use bait according to the season, on my regular water, sweetcorn tends to sit out there all day during the winter, but in summer it is a great bait. My other baits are selected from prawns, crayfish tails, bread, a variety of beans and meat. All have caught fish along with chick peas which I tried on a water that doesn't allow meat baits.

As the Spring progresses the water will begin to warm and the fish will start to feed more and I am looking forward to getting back to Claygate Lakes. My Winter days there have been tough and included three unusual blank sessions. Better days are coming!"

**Regards, Robin Piper**







[www.jackfrostattackle.co.uk](http://www.jackfrostattackle.co.uk)

01293 521186

Reynolds Place, West Green, Crawley RH11 7HB



Jack Frost Tackle Crawley. Crawley's Premier fishing tackle shop for carp fishing, match fishing and sea fishing.



**NEW CLOTHING SHOWROOM NOW OPEN!**  
The South's LARGEST selection of clothing and footwear. Please see our Facebook page.

- Over 400 rods on display
- Surrey and Sussex Trakker & Nash Super Centres
- One of Sussex's biggest Superstores with two floors and 3,500 square feet
- Free Parking

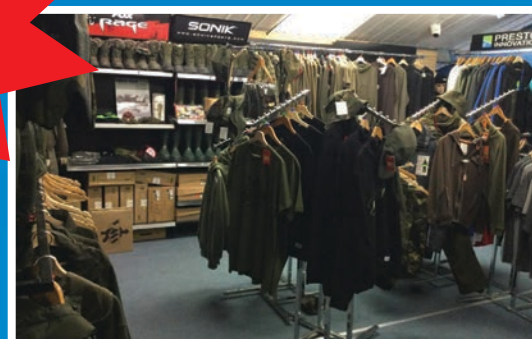


**WE BUY  
GOOD QUALITY  
SECONDHAND  
TACKLE - CALL  
FOR DETAILS**

**Free Spirit**  
FISHING

Interest Free Credit

Omni Capital  
Retail Finance  
Interest free credit



**DAVA**

**PRESTON  
INNOVATIONS**

**DRENNAN**

**KORUM**

**URBAN**  
Bait

**SHIMANO**



**FOX**

**KORDA**  
THINKING TACKLE

**E-S-P**



**GARDNER**







## ORCHARD PLACE FARM FISHING



**Carp to 49lb+**

**13 FISHING LAKES in the KENT COUNTRYSIDE**

Pearsons Green Road, Paddock Wood, Kent TN12 6NY

Tel: 01892 838576 Mob: 07860 608218



**Catfish to 101lb+**

At Orchard Place Farm you can surround yourself in the natural beauty of the Kent countryside, located just outside of the picturesque town of Paddock Wood, and only 8 miles from Maidstone. The fishery boasts 13 lakes - 10 carp and catfish lakes and 3 match/pleasure lakes.

### SPECIMEN LAKES

DAY TICKETS  
AVAILABLE

24HR - £30  
48HR - £55

(additional charge  
for 3rd rod)

### FULLY FUNCTIONING LAKE 13 - CARP & CATFISH WATER

Many swims have disabled access • All-weather pathways leading all around the lakes and up to each individual swim • Purpose-built toilets located in the main car park (with hot shower) • Between Lake 3 and Lake 4 (toilet and sink block only) • Block constructed by Lake 7 also contains a microwave, fridge and washing up facilities.

**FOOD IS AVAILABLE ON SITE FROM MID-MARCH TO OCTOBER**

### MATCH/ PLEASURE LAKES

DAY TICKETS  
2 RODS - £10  
CONCESSIONS  
1 ROD - £8

**[www.orchardplacefarmfishing.co.uk](http://www.orchardplacefarmfishing.co.uk)**

Tackle/bait/shop situated in the main car park, stocking all top bait brands inc worms maggots etc. Everything you need at VERY competitive prices.



## Sues Tackle Cabin

Tel: 01797 225015 / 07980 290247

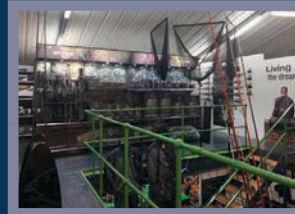
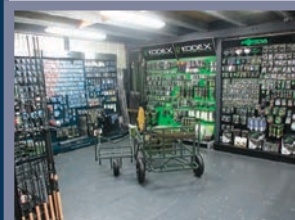
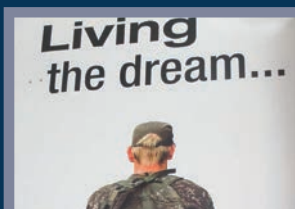
Email: [robbie@ryespice.co.uk](mailto:robbie@ryespice.co.uk)



The Spice Warehouse,  
Rye Harbour Road  
Rye TN31 7TE

Open: Mon - Fri 8am-5pm, Sat 9am-4pm  
Sun 10am-4pm (April to Xmas), B/Hols 10am-4pm  
Plenty of FREE parking right outside the door

**Your ONE STOP destination for all your coarse, carp, predator, beach and boat tackle and bait**



**Friendly helpful staff**

IF BY ANY CHANCE WE DON'T HAVE WHAT YOU WANT IN STOCK...  
...WE WILL ORDER IT

Huge new dedicated bait room! Indoor bivvy display areas on upper floor!



**NEW WEBSITE  
COMING SOON!**

VISIT OUR EBAY STORE  
'SUES TACKLE CABIN'





# NUTRABAITS®



## THE LEGEND RETURNS MARCH 2022



## Greenacres Farm Fishery Biddenden, Kent

**Speci 1** This lake has been proving challenging at times with the weather being so up and down, but to those that are up for a challenge have been reward with a couple of fish. Solid pva bags over a small bed of particle has seemed to be the winning ways of getting a few fish out. **Ryan Hoy** did just that which resulted in a nice mirror and a common in the double swim 1/2, also in the same swim a week prior Ian Stones landed a lovely scaley mirror of 19lbs 8ozs. Bailiff Martin even managed to wet a line in swim 3 and was rewarded with a ghosty common weighing 16lbs.

**Speci 2** Still producing the odd catfish with some lovely carp in with the mix, the catfish have slowed up all the time the temperatures stay low but one or two are still showing. Catfish are being taken on single 21mm robin reds, luncheon meat and lobworms. Carp are being caught using solid pva bags with your favourite waffer or a pop on a short hair. **Anthony Hildige** fishing swim 3 and 4 and managed to land a 15lbs catfish and then was rewarded with a **PB** 41lbs 8ozs and was over the moon.

**Heron** A lovely mixed coarse lake that has been very popular with the regulars catching a lovely mixed bag of fish with the odd chance of catching a good size carp up to 15lbs, average carp being caught are between 6-7lbs. Large bags of skimmers being caught on this lake since the colder weather has settled in.

**Kingfisher** This match lake is great fun with a guarantee of catching, brilliant for families or anyone wanting to teach their kids how to fish. Stay away from boilies in here and use natural baits like maggots, corn, pellets, worms on light float fishing setup.

**Bluebell** A little tench pond tucked out of the way, this pond is showing a good number of tench being caught on float or feeder tactics using worm, maggot, paste or sweetcorn on the hook. The carp in here are also stunning fish that can be caught up to 10lbs with also the odd roach, rudd and gudgeon.

### Rules

- Please dip all nets, slings, cradles and unhooking mats located in carparks before entering or driving to any of the lakes
- No one under the age of 16 to be left unattended at all times, this also means too and from the toilet
- No one under the age of 18 is allowed to night fish without a responsible ADULT
- No takeaways after 6pm to be delivered
- Gates open 7am and close 7pm • CCTV throughout the complex



Ryan Hoy



Anthony Hildige



Bailiff Ian Stones

See full list of rules at [www.greenacresfarmfishery.co.uk](http://www.greenacresfarmfishery.co.uk)

## PINIONS

### FISHING BAIT

Open 7 days a week

Monday - Saturday 9am until 5pm

Sunday 10am until 4pm

01622 718580

431 London Road, Ditton, Aylesford ME20 6DB  
(only 5 minutes from M20 Junction 5) Ample FREE parking



WhatsApp us on

07808 645806



SONUBAITS



Check out our Instagram page  
#pinionsfishingbaits

[www.pinionspetfoods.co.uk](http://www.pinionspetfoods.co.uk)

9 FANTASTIC LAKES TO SUIT ALL FROM BEGINNERS  
TO ADVANCED ANGLERS



Coarse Fishing  
Catfish &  
Carp Lakes



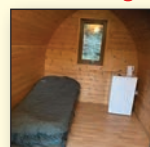
BOOKING ESSENTIAL

On site  
tackle shop  
and snack bar

Senior  
Discount Days  
Monday  
Tuesday  
Wednesday  
JUST £6 ALL DAY

Powdermill Lane  
Battle East Sussex  
TN33 0SU

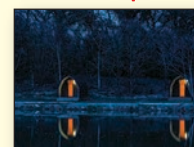
Inclusive fishing and accommodation packages at great prices.  
Touring and camping fields to include electric hook-up.



Lakeside pod hire

Toilet and shower facilities

Farm Shop



Large variety  
of tickets  
available

Private  
lake hire  
available  
on request

Set in the  
heart of  
1066 country

01424 893394



[www.wylands.co.uk](http://www.wylands.co.uk)





# GREENACRES FARM FISHERY



Sissinghurst Road | Biddenden | Kent | TN27 8EH

Located on the Weald of Kent in Biddenden we offer syndicate quality lakes for all. There is one specimen lake for carp up to 30lbs+, one specimen predator lake for carp to 27lbs+, catfish to 60lbs+ and pike, one match lake with twenty-two purpose built swims, one coarse lake and finally a tench/family pond. Facilities include a club house with toilets, shower, wet room and kitchen facilities.

*This beautiful setting needs to be visited and enjoyed!*

Prices start at £10 per session on the coarse lakes, £15 for the specimen lakes rising to £25 for a 24 hour ticket (£5 extra for a third rod).

Gates open at 7am and close at 7pm

**SENIOR DAY TICKETS ON OUR COARSE LAKES HERON AND BLUEBELL ARE AVAILABLE FOR £5 MONDAY TO WEDNESDAY**

To book, please call or text us on **07933 934942**

or visit our website **[www.greenacresfarmfishery.co.uk](http://www.greenacresfarmfishery.co.uk)**

Email : [greenacresfarmfishery@gmail.com](mailto:greenacresfarmfishery@gmail.com)





## Hawkhurst Fish Farm Hawkhurst, Kent

**Specimen Lake** A big well done to **Darren Goodsell** who broke his **PB** twice on a day session, landing two mirrors of 29lbs 6ozs and 30lbs 1oz.

**Main Lake** A huge well done to **Curtis** who fished during our first week of reopening, he managed to land 7 fish during a day session! He came back the following week along with his mum **Eileen**, and they landed 6 between them, including a new **PB** for Curtis with a 26lbs 5ozs common. **Miller** and **Martin** had a great session despite some terrible weather, landing 8 fish between them, the best being a 31lbs 1oz mirror for Martin and a 20lbs 1oz Common for Miller. They commented that it's a 'lovely clean fishery and top guy bailiff!'

**Dove Lake** A few big adjustments have been made to Dove Lake in terms of stock during our closed period, enhancing the lake and the way it fishes. Having planned to net this lake to check stock, we were surprised to find a large quantity of catfish. The majority of these catfish have been removed, leaving around 15-20 catfish up to 66lbs. The stock of carp was fantastic, with nearly all being above 20lbs, average weight approximately 23lbs, all stunning condition and still some that had never been caught. There are approximately 90 carp in the lake. Dove Lake is known as a harder lake to fish, but with the removal of the catfish we are expecting the carp to flourish this year. The catfish removed from this lake have been stocked into Four Trees Lake.

**Four Trees Lake** During our closed period we completely drained the lake and removed all previous stock, and have now restocked with 80 catfish up to 40lbs. Due to the nature of this lake, you will now need a minimum 42" unhooking net and large padded (110cms x 70cms) landing mat. The carp removed from this lake have been stocked into Main Lake. Four Trees Lake will now hold a maximum of 4 anglers. This lake is currently closed but due to reopen shortly, so please feel free to get in touch for more details.



Darren Goodsell  
30lb 1oz Mirror - Specimen Lake



Darren Goodsell  
29lb 6oz Mirror - Specimen Lake



Miller Craven  
20lb 1oz Common - Main Lake



Curtis Brightwell  
26lb 5oz PB Common - Main Lake



Martin Craven  
31lb 1oz Mirror - Main Lake



Curtis Brightwell  
Common - Main Lake



Eileen Brightwell - Main Lake



Billy Edwards - Common - Dove Lake

## Hawkhurst Fish Farm

Hastings Road, Hawkhurst, Kent, TN18 4RT

T: 01580 753813 E: info@hawkhurstfishfarm.co.uk

### NEW CATFISH ONLY LAKE!

We are excited to announce Four Trees Lake has been emptied and re-stocked with 80 Catfish, weighing up to 40lb.

Opening soon! This lake will hold 4 anglers maximum; pre-booking required. More details on our website.

Day session: £20 | Spectator: £10

*Call the office to get booked on!*



[www.hawkhurstfishfarm.co.uk](http://www.hawkhurstfishfarm.co.uk)

### GABRIELS FISHERY

Edenbridge Kent  
TN8 5PP

07730 066088

[www.gabriels-fishery.co.uk](http://www.gabriels-fishery.co.uk)



Five lake complex with Picturesque scenery and wildlife

Swallow lake- carp to 20lb

Hare lake- mixed coarse with 12 species

Silver lake- match water

Oak lake- carp to 30lb plus



Admiral lake (specimen lake)- stocked to 45lb.

To fish this lake you will need the following equipment:  
42" landing net, a carp cradle with sides and an unhooking mat

River fishing try the weir pool for chub and pike

Tackle and Bait on site

Family campsite with easy access to many local attractions

Night fishing by appointment Access for disabled anglers



SANDWICH LAKES Sandwich Ash Road (A257), Near Canterbury CT3 2DA  
email: enquiries@sandwichlakes.co.uk

Sandwich  
Coarse Fishery

## Visit Sandwich Lakes in 2022

Tel: 07936 409912

Sandwich Lakes is a delightful day ticket fishery in East Kent situated near to the Royal Cinque Port town of Sandwich. Set in a beautiful countryside location, the venue caters for all anglers from the specialist carp angler to beginners.

### Our unrivalled facilities include:

A waterside cafe serving hot and cold food and drinks  
Ladies and gents toilets • Plenty of free parking  
On site tackle shop for bait and tackle • Rod hire

We can offer our visitors six coarse fishing lakes containing a variety of fish from silver fish to specimen carp. Matches and fishing lessons can be arranged by contacting our Fishery Manager Kevin Killeen.

### The lakes:

**VICTORY LAKE** a specimen water of two acres with interesting island features and lily pads in the margins. Stocked with commons and mirrors to 35lbs along with ghost carp, tench, roach, rudd and specimen perch. Night fishing by prior booking available.

**KINGFISHER LAKE** this pond is 0.6 acres in size and is heavily stocked with commons and mirrors to 12lbs and is ideal for bagging up! All eight swims are wheelchair friendly with excellent access direct from the car park. A bridge from Kingfisher allows easy access to Victory Lake.

Victory Lake



Berry Lake



Damson Match Lake



Meadow Lake

**MATCH LAKES - DAMSON AND VICTORIA** one acre in size, each of these lakes are designed for the match angler having shallow margins with reeds for summer fishing and a deep drop off for light feeder work and winter fishing. They are stocked with a great variety of fish including carp to 16lbs and we believe these are the most uniquely designed match lakes in Kent!

**MEADOW LAKE** one acre in size with eight marked pegs and traditional grass bank fishing, Meadow is stocked with scaley mirrors and commons to 14 lbs. This lake also holds large perch and roach so you will be sure to catch!

**BERRY LAKE** is one acre in size and stocked with 3000 F1s, commons, mirrors, roach, rudd, perch and some large bream. Float and pellet tactics work well on this lake. IN the summer months, surface sport with mixers produces huge bags of fish.

### Day Ticket Prices:

1 rod - £8    2 rods - £10    Family Ticket (2 adults and 2 children) - £25    Under 16s - £6    Sundowner (3pm to 7pm) - £6  
Rod hire (includes seat hire & landing net) - £5    Night fishing 24 hours (by prior arrangement) - £20

## Holidays at Sandwich Lakes

All bookings



on Sandwich Lakes

30 touring pitches with 16 amp EHU, new toilet and shower block with disabled wetroom.

Caravans & trailer tents £15 per night

Large motorhomes £18 per night

Pitch fees include EHU

and showers!



SINCE 1907  
CARAVAN AND  
MOTORHOME CLUB

We also have a CL site  
for Caravan & Motorhome Club members

[www.sandwichlakes.co.uk](http://www.sandwichlakes.co.uk)



# Hartley Lands Fishery

Swattenden Lane, Cranbrook, Kent, TN17 3PS

We are a day ticket fishery that offers specimen carp fishing, pleasure / coarse fishing and match fishing across our 6 lakes and 1 pond. Our lakes are maintained and managed to the highest of standards creating the best possible fishing environment and experience.

The complex is run on a booking system basis only other than Samson and Finches.

We also have brand new toilet and shower facilities built that cater to everyone's needs.

Carp to 38lb+, Tench to 10lb+, Perch to 5lb, Bream to 7lb, Roach to 2lb,  
Crucian Carp to 2lb 4oz



Open: 7am - 7pm summer time & 7am - 5.30pm winter time

Bailiff number: 07703 825064



Instagram

[www.hartleylandsfishery.co.uk](http://www.hartleylandsfishery.co.uk)



Instagram

**KENT TACKLE**



**01580 754422**

Over 45,000 items in stock

Lots of items on display

Friendly experienced staff

Stock most of the major brands

Live stock levels on the  
website, click and collect option.

Free carpark just outside

Open 7 days a week

Late Night Thursday till 8pm



We stock a wide range of Carp, Match, Predator, Coarse Tackle & Baits

[www.kenttackle.com](http://www.kenttackle.com)

Hawkhurst Fish Farm, Hastings Road, Hawkhurst, Kent, TN18 4RT





# Plurenden Lane High Halden TN26 3JW



Oak Tree is a 1 acre lake formed around an impressive oak tree. This really is a beautiful lake, Oak Tree has only 4 double swims, one on each corner of the lake with an island in the middle. Depths range from 5ft to 8ft. Currently there are 47 catfish to 50lb, 20 carp to 22lb and a small number of pike, however, more carp will be stocked over the course of the 2021/22 winter.



## Oak Tree Lake

Day £15 • 24hr £20 • 36hr £30 • 48hr £40  
Weekend lake exclusives (ideal for socials)  
£250 from Friday - Monday



Pleasure Lake is a 0.8 acre natural lake with depths up to 5m. This lake is in an 'L' shape with lots of features. With only 11 swims and a maximum of 9 anglers allowed to fish per day it really is a small natural haven! There are only 4 double swims for night fishing with a maximum of 3 night anglers permitted at any one time. Pleasure Lake contains no less than 15 species of fish with carp to 35lb and some surprises!



## Pleasure Lake

Day £10  
24hr £15 • 36hr £20 • 48hr £30

## Lillies Lake

Lillies is still under construction, but will be a small tranquil lake of only 0.5 acre shaped as a horseshoe. Lillies will be, as the name suggests, covered in lily pads and only have 2 swims. This lake will be for the more experienced angler who wishes to have the whole lake to themselves with the opportunity to catch one of Kube Lakes finest carp! Lillies will be home to no more than 25 carp, all in excess of 20lb with a select few over the 30lb mark along with a couple of surprises! This water will also have it's own pod where anglers can shower, cook, sleep etc., and this is due to be ready for March 2022.

Minimum stay • 48hr £100  
Week - Monday to Sunday • £400

## Members Lake

A 2.5 - 3 acre carp lake. This lake, like Lillies, is still under construction and will be ready for March 2022. There will be between 7 and 8 swims and a maximum of just 40 members. This lake has already been getting plenty of attention with 50% of memberships already sold! We will be introducing a carefully thought out stocking process over the course of the next couple of years to eventually reach the target of 100 specimen carp all 20lb+.

Yearly membership £200.  
Day sessions not chargeable, however, a charge for longer sessions will be: 36hrs £20 • 48hrs £30. For sessions of 48hrs or more you get a 1kg bag of boilies plus 2 FREE meal vouchers!

ALL OUR LAKES ARE STRICTLY BY BOOKING ONLY

via Facebook  @Kubelakes or Instagram



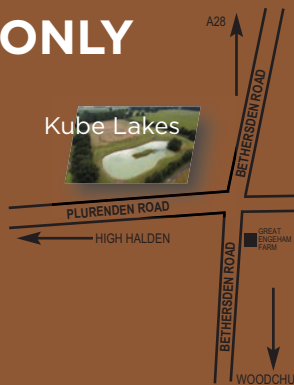
@Kube\_Lakes or WhatsApp



07742 423681

or email: [kubelakes@gmail.com](mailto:kubelakes@gmail.com)

Plurenden Road, High Halden, Ashford - nearest postcode TN26 3JW





## Tonbridge & District Angling & FP Society

With the River Medway varying in condition over the last month, catch reports have been thin on the ground. Match catches have been poor for most although **Ditch Howard** had a nice bag of skimmers on the Sportsground for 6lbs 14ozs in the Cheeseman Cup. **Mick Orum** nailed his first Society match win with an excellent net of skimmers and roach in the last leg of the Houghton Cup below **Hartlake Bridge**. **Larry Howard** and **Lee Wakeman** have continued to target the Chub and have had fish to 5lbs 4ozs. **The Old Ballast Pit** is still fishing well with carp to 30lbs being reported and some good bream catches. One in particular was **Steve Twort's** 16 fish to 6lbs 8ozs. There have been some individual bream to over 10lbs caught by carp anglers. **Steve Ellis** enjoyed some winter tench fishing on the **New Lagoon** as well as a few bream. Carp, roach and perch are also being caught. The pike fishing has produced mixed results of late. The Society pike match only produced 3 fish on a very tough day. **Steve Twort** took the honours with one fish for 10lbs 13ozs. **Martyn Hill** took second spot with a very late fish of 10lbs 3ozs and 3rd spot went to **Larry Howard** with a fish of 3lbs 6ozs. Society Bailiff **Melissa Fordham** enjoyed some pike action on the **Ballast Pit** while **Mark Roe** ventured out to **Vexor Bridge** to catch his first Pike of 2022. A late report came in of a 21lbs pike caught from the river in the Country Park. The Society has reinstated one of the flood damaged platforms on Haysden Lake.



## Horam Manor Fishery

10 secluded lakes in the Sussex countryside

Mixed coarse fishery with carp to mid 20s  
Perfect for families and experienced anglers

Day ticket fishing - Dawn to Dusk - Only £5 per rod!

24 hour fishing  
by prior arrangement  
Non-members £20  
Members £10



Annual Day Ticket membership 1 rod - £80 / 2 rods - £120

Buy a whip, bait + Day Ticket for just £15!



Horam Manor Farm, Horam TN21 0JB  
01323 840889 / 07707 759364



[www.horammanorfishery.com](http://www.horammanorfishery.com)

## MATCH RESULTS

### PIKE MATCH

#### Haysden Country Park

1st	Steve Twort	10lbs 13ozs
2nd	Martyn Hill	10lbs 3ozs
3rd	Larry Howard	3lbs 6ozs

### CHEESEMAN CUP Sportsground

1st	Ditch Howard	6lbs 14ozs
2nd	Larry Howard	2lbs 13ozs
3rd	Steve Twort	1lb 11ozs

### HOUGHTON CUP 6 Hartlake Down

1st	Mick Orum	10lbs 12ozs - 10pts
2nd	Mick Smith	3lbs 3ozs - 9pts
3rd	Derek Butcher	2lbs 0oz - 8pts
4th	Dave Williams	1lb 6ozs - 7pts
5th	Lee Wakeman	4ozs - 6pts





**WANTSUM ANGLING ASSOCIATION**  
Marshside Lakes - River Wantsum - River Stour

**Our folio of delightful waters include:**  
River Wantsum CT7 0QN / a section of the River Stour CT3 1JB  
Marshside Fishery: Homersham Lake & Scroggins Lake CT3 4EB

**Day Tickets available at all venues:**

RIVERS: Adult £5 (Juniors to 16 years FOC)  
LAKES: Adult £10 with loyalty card £7  
Junior (aged 14-16 years inc.) £5

Night Fishing 5pm to 7am: Adult £15 with loyalty card £12  
Night Fishing 24 hours:  
Adult £25 with loyalty card £20 / Junior as for Day Tickets

**Night fishing:  
Only by prior booking.**

Note: Juniors up to 13 years to be with an adult - FOC

Contact Wantsum Angling Association on 01227 678063  
or visit us at  
**www.wantsumaa.co.uk**

We can also be contacted via the  
**Contact Us** message service on the website

**NEW FAMILY RUN SHOP OPENS IN NEW ROMNEY**

**Romney Angling**  
59 High Street  
New Romney  
TN28 8AH  
**01797 362889**  
Open:   
Mon to Fri  
8.30am to 6pm  
Sat 8am to 6pm  
Sun 7am-12 noon

**FREE DELIVERY**  
on purchases over £30  
within 10 mile radius

**Catering for coarse, carp, sea and match anglers**

**Fresh maggots, worms, lug and casters to order, frozen sea baits**

**New lines added daily**

**WEBSITE COMING SOON!**

**BAIT & TACKLE**

**Email: info@romneyangling.co.uk**





**Furnace Brook**  
... naturally inspiring

River-fed 5acre lake with a range of specimen fish including:

Tench (5lbs +)  
Perch (3lbs +)  
Roach & Rudd (2lbs +)  
Bream  
Barbel  
Carp (up to 25lbs)

Furnace Brook CIC is a Certified Gold Standard Member of the UN's Generation Restoration





**Batsford Hollow**  
For group overnight stays

**Facilities:**

- 8 secluded & spacious swims
- Bespoke overnight shelters
- Catering facilities
- Showers

**Main Lake**  
Day & overnight tickets

**Facilities:**

- 16 easy access, spacious & secluded swims
- Parking close to lake
- Catering facilities
- Showers





## Plenty of fish for Pete at Pittlands!

Allan Oakeshott, the fishery manager at Pittlands Fishery, Horsmonden sent in this report after fishery member Pete Purnell had a great fish filled February session:

"Pete Purnell had a good day session recently landing a total of 10 fish, 5 of which were over the 20lbs mark from Lake B here at Pittlands."  
Allan Oakeshott

Allan sent a selection of photos for us to enjoy!



## Neil's dream session!

Neil Willis's brother Paul sent in this report on his behalf following an amazing perch fishing session!



"Neil Willis had a perch session of a lifetime with 3 big perch in an hour from our Private Lake. The weights were 4lbs 4ozs, 4lbs 1oz and 3lbs 12ozs. It will be very hard to beat that!"



Eastbourne Road (A22),  
Newchapel, Lingfield, Surrey RH7 6HL

Tel: 01342 324006

Mobile: 07710 656041

[www.beaverfarmfishery.co.uk](http://www.beaverfarmfishery.co.uk)

Email:

[beaverfarmfishery@live.co.uk](mailto:beaverfarmfishery@live.co.uk)

Facebook: beaverfishery

Instagram: @beaverfishery



We are a commercial day ticket fishery and have 2 Specimen Lakes, 3 Coarse Lakes and 3 Ponds.

Open 7am - 7pm Summer time and 7am - 6pm Winter time. Day ticket, overnight and long stays welcome.

### Facilities include:

- On Site Tackle Shop
- 12 Car Parks including Disabled Friendly Parking
- Shower/Wetroom
- Disabled Friendly Toilets
- Seasonal Snack Bar with Hot and Cold Food
- 2 huts available for hire



Concessionary Tickets for Junior, Disabled and OAPs

No pre-bookings taken for swims

Win a FREE SESSION with our Fish of the Month Competition

Automatic Security Gates that close at 7pm (Summer)  
6pm (Winter)

24-hour CCTV



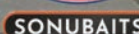
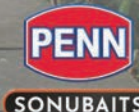
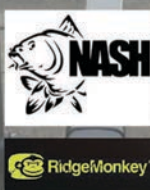


**[www.absolutetackle.co.uk](http://www.absolutetackle.co.uk)**

**All the top brands for the coarse, carp, predator and sea angler**

**Quality fresh and frozen baits always in stock**

**We stock the best range of leads for the sea angler in the South East!**



**01227 636724 / 07809 330854**

**Plenty of FREE parking right outside the door**

**Monday to Saturday 9am - 5pm / Sunday 9am - 1pm**

**12 Wealden Forest Park, Herne Common CT6 7LQ**

**Between Canterbury & Herne Bay on A291 - just 10 minutes from either!**

**Email: [badders22000@hotmail.com](mailto:badders22000@hotmail.com)**

**BAIT AVAILABILITY DEPENDENT ON TIDE AND WEATHER CONDITIONS**





Tel: **01795 520887** [www.thewillowsanglingcentre.co.uk](http://www.thewillowsanglingcentre.co.uk)

The Willows Angling Centre, Bax Farm, Lower Road, Teynham, Kent ME9 9BU



### Langley's Lake

A 3-acre specimen carp lake with hard fighting fish up to 30lbs. We only allow a maximum of 8 anglers at time on to this water which has a variety of features to fish to. Langley's is the largest lake at the venue and there are a number of additional fishery rules in place on this water. The average depth is around 5'. Get your tactics right and you can expect a great session!

**£15 / 12 hours – £30 / 24 hours**  
No concessions.



### The Stream

Approx 1/3 mile long with an average width of 30', this canalised section of water offers anglers the opportunity to fish with a pole or rod for a variety of fish including crucians, roach, rudd, bream, perch and tench. A very popular water for those who enjoy a more traditional style of fishing. The average depth is 4' and there are 60 pegs available.

**£10 / 12 hours – £20 / 24 hours**  
Concessions available.  
Match bookings available.



### The Pan Lake

A more intimate water than Langley's with carp to 20lbs along with a selection of silver fish including roach, tench, barbel and perch. With an average depth of 5' and lots of features, this pretty water offers all anglers a great day out.

**£10 / 12 hours – £20 / 24 hours**  
No concessions.



### Farm Lake

An average depth of 4' with lots of features, this lovely water is well stocked with carp, bream, roach, perch and F1s. This water is a popular choice for families, young anglers and beginners and is close to the well presented on-site facilities.

**£10 / 12 hours – £20 / 24 hours**  
Concessions available.

Find us on 

Situated in North Kent, THE WILLOWS ANGLING CENTRE offers anglers a choice of three beautiful lakes and the stream, which is a canalised section of water!

**WE HAVE MOVED TO THE  
WILLOWS ANGLING  
CENTRE**



**Find us at  
Bax Farm, Lower Road  
Teynham ME9 9BU**

SPECIALISTS IN CUSTOM NICK BUSS RODS

**CARPERS  
DEN**  
TACKLE SHOP 

WE BUY / SELL & PART EXCHANGE

**[carpersdenonline.com](http://carpersdenonline.com)**

We buy, sell and part exchange good quality, pre-loved fishing tackle  
Tackle, bait and accessories from all the major manufacturers including:



**SHOP TIMES**

Mon/Tues: 7am – 5pm

Wednesday: CLOSED

Thurs/Fri/Sat: 7am – 5pm

Sunday: 7am – 1pm

email: [carpersden@outlook.com](mailto:carpersden@outlook.com)

**01795 520887**



# Orchard TACKLE

**Thinking Anglers Camflec  
Compact Carryall** £49.99



**Shimano Catana 4000rc**

£29.99

**Sonik Subsonik  
Mono 3000m Spools**



£39.99

**CC Moore Northern Special  
Dumbbell Wafers** £6.99



**Free Next Working Day Delivery  
when you spend £50 or more.**

*Excluding Rods (separate delivery charge)*

**Next Working Day Delivery  
Excludes weekends & Bank Holidays**

**Shimano FX Xt  
Spinning Kit**  
From £44.99



**Nutrabaits River Plus Range**

From  
£4.99



**Sticky Fluro Pop Ups**

£6.99



## ORDER TODAY

[www.orchardtackle.co.uk](http://www.orchardtackle.co.uk)



58 High Brooms Road, Tunbridge Wells, Kent TN4 9DB

**Tel: 07494 670 328**



is proudly  
sponsored by



This section is where you display your catch to other Freshwater Informer readers. Each month, Pallatrax will choose from the featured photos and pick their winner.

**The winner will receive 8 packs from the innovative new GRIPZ hook range.**

The lucky angler will have a packet of sizes 2, 4, 6, 8, 10, 12, 14 and 16, so will be equipped for all eventualities. This fantastic prize is worth over £40 RRP!

To be in with a chance to win this fantastic set of GRIPZ hooks, all you have to do is send us your catch photo via our Facebook message page or email [barnic@btinternet.com](mailto:barnic@btinternet.com) Entry is FREE and all coarse fish photos are welcome! From a carp to a roach, send us your pictures! Please make sure you tell us where it was caught and it's weight.



### Gripz Fishing Hooks

After extensive research, where the limitations of both barbed and barbless were scrutinised, there has been an obvious need for improvement thus resulting in this radical design that crosses the boundaries between what we have had and what we now have. Made from high grade Japanese wire, the key improvement has been the introduction of a series of minute horizontal grooves on the inside of the specially designed arrow shaped hook point, where historically the barb would have been. These grooves allow the hook to hold securely in the fish's mouth when pressure is applied, as the flesh presses into the grooves resulting in a firm hook hold with no slippage. **What are you waiting for?**

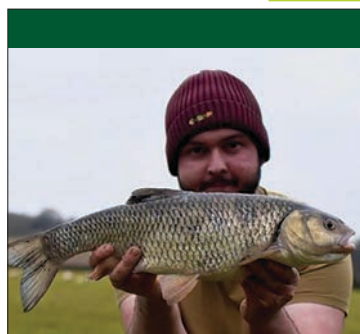
**Grab your rods and head down to your favourite water and remember to take your phone or camera!**



The winner of the PALLATRAX GRIPZ  
Hooks Set for FEBRUARY is...

**CARL ALCHORN**

*well done!*



Matthew Colegate - 5lbs 1oz



Jordan Parish - 21lbs Hartley lands



Joshua Chisnall - 34lbs Elphicks



Kevin Smith  
21lbs 4ozs Ballast Pit, Tonbridge

### 29lbs Knightingales Fishery



### Jack has been busy!

Jack Pearson sent in these reports and lovely photos from a selection of sessions around the region:

"A **29lbs mirror carp** caught from Knightingales fishery with a 15mm krill pop up inside a solid bag, cast tight to the island, containing krill micro pellet and stick mix. The rig used was a 6" slip d rig.

A **28lbs mirror carp** caught at Lovelace fishery using a tiger nut wafter. This was placed into the near margin with a few boilies around it. The rig used was a 10" slip d rig. A **23lbs pike** was caught from my local river with a roach dead bait on a double treble rig. An **18lbs carp** caught

from my local club water with a 15mm krill wafter inside a solid bag containing krill micro pellet. This bag was placed into the near margin with a few loose boilies. The rig used was a 6" slip d rig."

Regards Jack

Well done Jack,  
some cracking fish  
and great photos!

### 23lbs local river



### 28lbs Lovelace Fishery



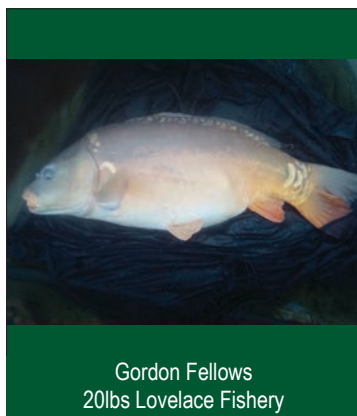
### 18lbs club water







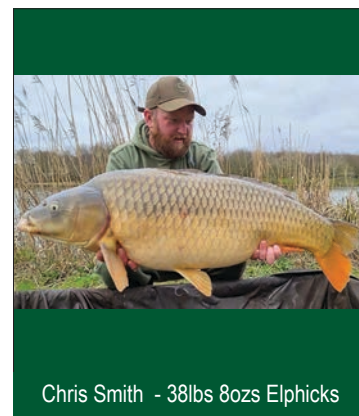
Ricky Deerans 2lbs



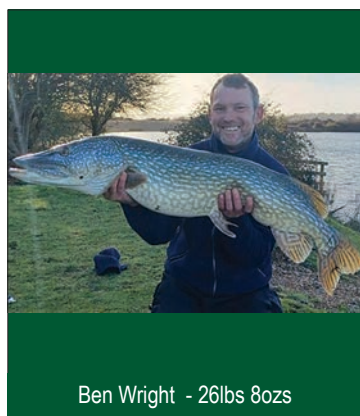
Gordon Fellows  
20lbs Lovelace Fishery



Samuel Hesmer - 41lbs 8ozs Elphicks



Chris Smith - 38lbs 8ozs Elphicks



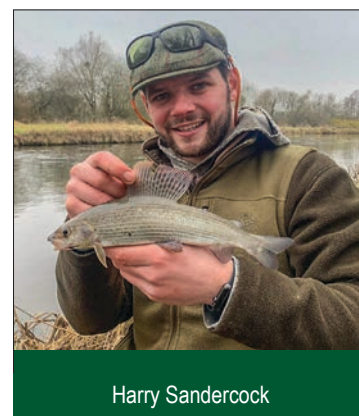
Ben Wright - 26lbs 8ozs



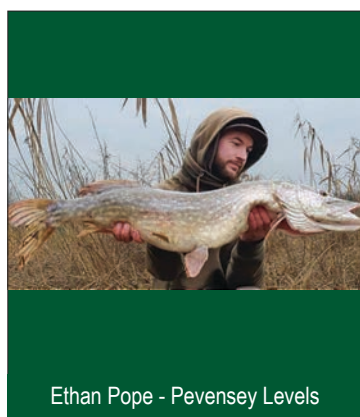
Rob Smith  
18lbs 6ozs Kent club water



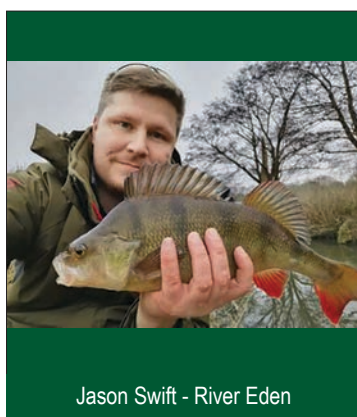
Broderick Bassett



Harry Sandercock



Ethan Pope - Pevensey Levels



Jason Swift - River Eden



Marc Harris - 27lbs Sandwich Lakes



Carl Hildige  
41lbs Greenacres Farm Fishery

## Dom opens his 2022 carp account!

**Kent carper Dom Cole sent us this report from his first session of 2022 and he was more than pleased!**

**First trip of the year, first carp of the year!**

"I recently had a 48 hours session at Linear Fisheries. On arrival (8am Monday) it was clear that the fishery was very busy and a few of the lakes were shut for maintenance, putting more pressure on the remaining lakes...

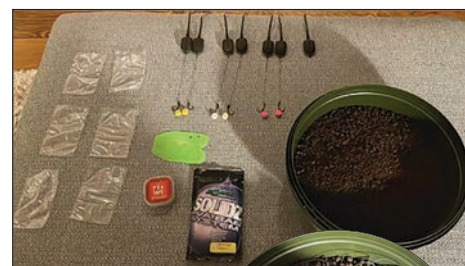


people running about everywhere!

I did a lap of St Johns first and it quickly became apparent that the fish were getting caught from a few swims and the bulk of the fish were in the main bowl area, which was well stitched up. I bucketed a swim away from the angling pressure in the hope the fish would move out of the main bowl area. After 24 hours I'd seen no shows or any signs that the carp were moving out into the bay I was fishing, so a move was on the cards. B1 was rammed, and the areas I fancied on Manor were taken so I went to check out Oxlease.

To my surprise there were quite a few pegs available, even better there were pegs available where the carp had been seen and caught over the previous days. I put my bucket in a swim half way down the left hand bank which commanded a lot of water into the middle zone, right in the teeth of the wind. I wasted no time in shooting back over the road to get my kit. The buzz was back on! I deployed 3 solid bags spread out at 80 yards while getting sorted in the new peg. It didn't take long at all when just under an hour later the middle rod was away. After a decent scrap my first carp of the year was safely in the net! Spinning the scales round to 31lbs 8ozs, it's safe to say the move definitely paid off.

The rest of my session was uneventful, but I wasn't going to complain. With a 30 on my first session of the year I was always going to go home a happy man. The buzz is back and I will be on the banks again soon! "



Dom Cole





**COOMBEWOOD FISHERY**  
High Halden Kent TN26 3JH

Find us on:  
facebook

Call: 07895 679569



Instagram

email: alex@coombewoodfishery.com

Located in our peaceful private ancient woodland in the heart of the Kent countryside, we have 2 family friendly, well stocked main lakes.

Fully accessible to disabled anglers including the toilet facilities.

Front Pleasure / Match Lake - Mixed Species with Carp to 20lb+

Back Specimen Lake - Cats to 40lb+, Carp to 30lb (average 15lb)

We also have for hire, a Private Woodland Lake and a secluded Camping Area with private float only pond, BBQ, shower & parking space.

GROUP / CLUB / MATCH BOOKINGS WELCOME (Front Lake Only)

Professional Angling Trust accredited Coaching available for all ages.

Day tickets from £8.00 available on the bank. Pre-booked night sessions

[www.coombewoodfishery.com](http://www.coombewoodfishery.com)

Redbrook Street, High Halden, Near Ashford TN26 3JH

## New PB at Knightingales for Dave Wayman

Dave Wayman had a great session at Knightingales Fishery at Stone recently and bagged a huge chub which is a new PB for him!

"Well after struggling to find a nice chub on the rivers this year, I thought I would pay Knightingales Fishery a visit. It was a tough day missing a couple of takes before I finally hit one and oh what a way to smash my old PB of 3lbs 12ozs with this monster going 6lbs 4ozs. It was caught on a maggot feeder with maggot and worm on the hook."

For more information on fishing at Knightingales give Jim a call on 07941 176205



## JUST FISHING TACKLE

22 Marion Crescent  
Poverest Road Orpington BR5 2DD

01689  
637477

Open times:  
Tuesday - Saturday  
9am to 5.30pm  
Sun & Mon: CLOSED

[www.justfishingtackle.co.uk](http://www.justfishingtackle.co.uk)



sales@justfishingtackle.co.uk



## New Claygate Lakes

DAY & NIGHT FISHING - TN12 9PL

For all match and pleasure bookings and enquiries  
please ring Dave **07770 513448**  
NIGHT FISHING ON ALL LAKES

ON-SITE  
FOOD  
UNIT



LAKE AMY - Carp to upper 30s



LAKE EVA match/pleasure - Carp 27lb+ Tench 11lb+ Chub 5lb+ Barbel 6lb+ Perch 5lb+ Bream and other silvers



LAKE SOPHIE match/pleasure - Carp 16lb+ Tench 8lb+ Chub 5lb+ Barbel 4lb+ Perch 3lb+ Bream 11lb+ Roach 2lb+ Skimmer Bream and other silvers



[www.newclaygatelakes.co.uk](http://www.newclaygatelakes.co.uk)





# Angling Societies

## The Linton Angling Society - Membership Vacancies

We are a small but friendly club with beautiful lake, 2 ponds, 5 reservoirs and over 8 miles of fishing on the River Medway and Beult. Our waters contain Carp to 32lb, Pike 30lb+, Tench 8lb+, Chub 7lb, Perch 4lb and Roach to 3lb, including some good Bream and Eels. All year fishing, member's guest permits, night fishing allowed. We run over 30 matches a year and have a large junior section. Concessionary rates available for OAPs, Disabled and Juniors.

For further details contact: **Jason Tuckey on 07983 569220**

e-mail: [lassecretary@lintonangling.co.uk](mailto:lassecretary@lintonangling.co.uk)

**[www.lintonangling.co.uk](http://www.lintonangling.co.uk)**

## Hastings Bexhill & District Freshwater Angling Association

Season runs from 1st April to 31st March.

Established in 1895 the association provides its members and day ticket anglers with various lakes and rivers to fish throughout Hastings, Bexhill and the surrounding area.

We currently have seven waters that provide a mixture of species at specimen weights to suit all anglers' preferences. As well as the lakes run by the association we also offer members the ability to fish various stretches of river in the surrounding area.

The association provides waters to suit all ages, abilities and interests so there's something for everyone.

To apply to become a member please download and print the application form from our website. Complete and return to the Membership officer on the application, alternatively it is possible to purchase your membership from any of the tackle shops listed on our website.

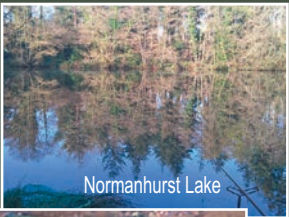
For further information please contact:

**Chris Pagan 07429 655237    Steve Potter 07935 268174**

Postal enquiries: **S Corke, 2 The Siding, Bexhill-on-Sea TN40 1RF**

**[hastingsandbexhillangling.co.uk](http://hastingsandbexhillangling.co.uk)**

H.B.D.  
F.A.A.



Normanhurst Lake



Wishing Tree Reservoir



River Rother



**14 miles of River and 7 Lakes containing:**  
Carp to 52lb 4oz, Tench to 12lb 8oz, Bream to 19lb+, Barbel to 15lb 2oz, Chub to 5lb+, Perch to 3lb 6oz, Pike to 31lb 6oz, Crucians to 4lb 6oz and Grass Carp to 29lb 6oz.

Also large Roach and Rudd to 3lbs and large eels.

## MEMBERSHIP FEE 2021/22 SEASON

Senior Membership – £70 + £10 Joining fee

Ladies Membership – £30 + £10 Joining fee

OAP 65 years – £35 + £10 Joining fee

Junior Members £10 + NO JOINING FEE

Family Ticket (parents + children u16) – £100 + £10 Joining fee

Flood Barrier Night Ticket – £175 + £10 Joining fee

Student 16–18 years – £35 + £10 Joining fee

View the waters on the web  
**[www.tonbridge-angling.co.uk](http://www.tonbridge-angling.co.uk)**

PO Box 131, Tonbridge TN11 8WB

Contact Martyn on **07802 248861**

**CAN'T PICK UP THE FRESHWATER INFORMER NEAR YOU?**  
**FOR JUST £25 A YEAR - WHY NOT HAVE IT DELIVERED DIRECT TO YOUR DOOR.**  
**ALL YOU PAY FOR IS THE POSTAGE & PACKING.**

**NEW!**  
**CARD PAYMENTS ARE**  
**NOW ACCEPTED**  
**- JUST CALL**

*Please note that payments can be accepted by cheque made payable to 'The Freshwater Informer', bank transfer or just call with your card details.*

We will send you **YOUR** copy of the magazine each month keeping you up-to-date with all the angling news here in the South East. Call **01634 869317** to arrange your subscription or complete this form and post it to:- **FRESHWATER INFORMER c/o 6 Meadow Way, Wouldham, Rochester ME1 3GR**

Name: .....

Address: .....

Your contact phone number is required:.....



**A**s I write this in front of my blazing wood burner the weather outside is horrendous, howling winds of 70mph plus and driving rain. I certainly don't want to wish my life away, but I can honestly say I have never looked forward to Spring so much! Weather is one of the biggest variables in angling but there is no way I am venturing bankside in such conditions, though it can be ideal for catching, I think I will sit this one out!

Modern angling is so far away from the tactics and products I grew up with and a lot of what we see in the modern scene seems confusing and even contradictory. I even believe we are in danger of making it more difficult to fish efficiently and can certainly draw us away from some of the more important factors of successful fishing. I have no reason to critique, other than to turn negatives into positives, and I can openly admit that I have had to pull myself back to angling reality sometimes having drifted away from proven tactics. Obviously, there is nothing wrong with experimentation, far from it, but some of the 'tried and tested' can be overlooked or under appreciated.



*X marks the spot!*

important it is to fish accurately. They feed up spots in tight patterns and then drop their hook bait amongst these small baited spots, and in doing so increase their catch rates dramatically. Even a few inches away can be the difference to catching lots or just catching the odd one or two, or none at all!

Some precise baiting up can be easy, especially if you are fishing your own margins – an area very much underrated and too frequently overlooked. You can creep into the area you have identified, via good watercraft, as the spot you want to fish and easily bait up very accurately. Then it is a case of carefully placing your bait onto the spot and retreating back to your bank sticks or pod. But when you are casting it becomes a whole different story as the dynamic changes with lots of variables impacting on the efficiency of your cast and placement.

This leads me into something I used to do all the time, and I really can't tell you why I stopped doing and using; the marker float. Using a marker float, especially in open water spots is in many ways a 'must', so why did I stop using and in turn dropping the advantages that such gave me? To have a marker I can repeatedly bait up onto my chosen spot and then cast my hookbait into position. Actually, having a point to aim directly at makes so much common sense and gives you that distinct advantage over a baited area spread inconsistently over a much larger area. The only 'downsides' to using a marker float is that you do need to have a separate rod to be able to fish efficiently, which is solely used for the job. Plus you have to take the time and make the effort to learn how to use it to its maximum, but effort always leads to more rewards! We can buy so much 'stuff' nowadays, but for a marker rod set up it should be relatively cheap, or you can use a rod and reel that is no longer otherwise used. As long as it is tough enough to get that marker float out there, then you are good to go!



The above paragraph is very relevant to the content of this latest piece, which focuses on accuracy in angling, and the need to be really accurate, consistently accurate. When I say accurate, I am here talking about your baiting strategy initially, and then the precise placement of your bait onto a tightly baited area. I call my baited area 'The Bird Table'. If you think of a bird table and how the birds will concentrate upon this small, but focused area, that is what I want when I am fishing. I want the fish to find a concentration of bait where they will be competing for food and, without doubt, fish competing for food have the potential to drop their guard making them easier to catch.

I have always been very 'led' by the successful match angler. To be successful they have to frame week in and week out, and watching these anglers you again will appreciate how



*Marker floats*



*The baiting up tools*



Before I go, when every day can be a school day, another thing I have learnt over the years was how to load my reel with new line. I was told, and this proves to question everything and assume nothing, to drop the new spool into a bucket of water and then reel straight onto my reel. I have done this since a youngster, believing what I was told, until the day I turned up at the Gamma factory in the USA, where I was informed that I had been doing it so wrong for so many years! None of us like to get it wrong, but I would be daft not to question the actual manufacturers of the Gamma fishing lines and what they told me really proved how you can believe something and actually be miles off the mark. They told me that my approach was totally flawed and when they explained why, I did feel a tad stupid as I thought I knew my stuff! By putting the spool in a bucket of water the spool could 'flip' which meant at one stage the line would be coming off one way, after the 'flip' the line would then be coming off in reverse and thus actually building in line twist! When it was explained so eloquently by real experts, it became so obvious where and, therefore, why I had been doing it wrong!

The way they told me to spool up was to simply place the spool on the floor with the label facing upwards and dry wind, under pressure of the line passing through forefinger and thumb, directly onto my reel. This meant, how the line had been loaded onto the pool at the factory, the line would flow off the way it was meant to with zero line twist. I suppose the main point for me, bar learning such a valid technique myself and never having line twist since, is shouldn't we be questioning more in what we are doing within modern trends? By assuming a lot of the information out there is correct is it leaving ourselves open to going down rabbit holes which actually make us less efficient anglers? Just food for thought and hence why I question everything, wanting to drill down to the facts instead of believing information that under scrutiny quickly reveals flaws!

Fingers crossed my next piece will see me back on the banks, I am going stir crazy and in my mind I can see those glorious mornings with the sun rising, steam swirling off the water's surface and my first stunning olive green and red eyed Tench of the year being drawn over the top of my landing net!



Simon 'Pom' Pomeroy



## TRADE-IN-TACKLE

Carp, Coarse and Vintage Angling Specialist

- Good quality, pre-loved tackle purchased and sold
- Stockist of Korda, Nash, Gardner, Middy, Wychwood, Leeda Mainline and many more quality manufacturers.
- Fresh maggots and worms always in stock along with frozen deadbaits and a massive range of boilies and groundbaits.

Come and visit us at:  
Maidstone Road, Watlingbury ME18 5EH  
(opposite the railway station on the B2015)

**01622 814296 or 07941 085011**

A warm welcome and a great deal awaits you!

**IF SELLING, PLEASE PHONE BEFORE VISITING**



[www.shortiestackle.co.uk](http://www.shortiestackle.co.uk)



Unit 16  
The Glenmore Centre  
Whitfield  
Dover CT16 3FH

**07563 620368**

[shortiestackle@yahoo.com](mailto:shortiestackle@yahoo.com)



Monday 09:00 - 14:00  
Tuesday 09:00 - 14:00  
Wednesday 09:00 - 17:00  
Thursday 09:00 - 17:00  
Friday 09:00 - 17:00  
Saturday 08:00 - 12:00  
Sunday - Closed



Thames at Oxford

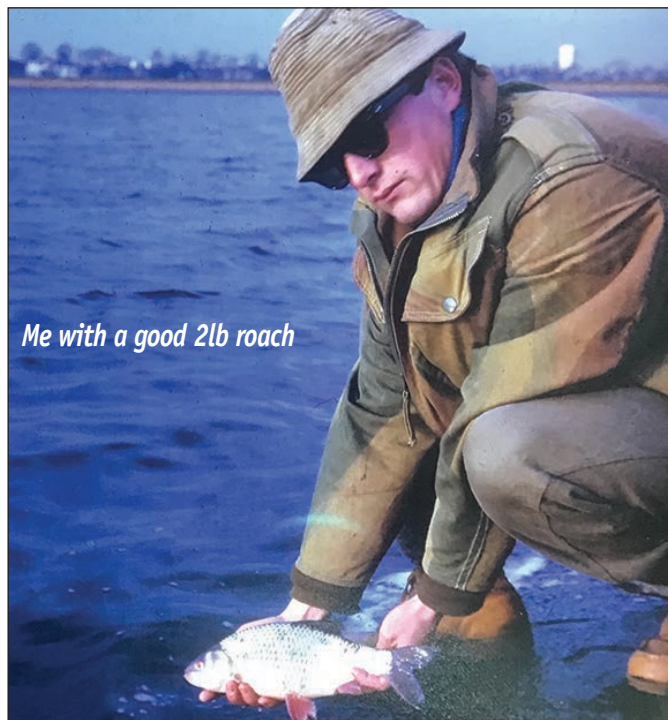
Photo courtesy of Esther Johnson

# The Golden Years of Coarse Fishing

by Bob Rolph

## The former huge roach of the London reservoirs - PART ONE

60 years before carp became the 'be all and end all' of modern fishing, roach were a beloved quarry for many a 1960s specimen hunter. Jack Hilton fished for them on the Dorset Stour, Dick Walker fished for them on the tiny River Bean and John Wilson fished the rivers Wensum and Waveney in Norfolk for these beautiful red eyed specimens, which were prolific half a century ago. The river Windrush in Oxfordshire produced many a fine fish for Peter Stone and Frank Gutfeld and the chalk stream Avon in Hampshire was teeming with them. These were all pure unpolluted rivers 60 years ago and the roach grew fat and fast in the highly alkaline chalk stream water full of shrimp and molluscs.



*Me with a good 2lb roach*

All these late famous names from angling's past wrote about their exploits in the fishing magazines of the time and the humble roach became a star with its distinctive smell and silver flanks and red eyes and fins. A 2lbs fish was the target to aim for and many lakes, rivers and reservoirs in the country held such fish if you knew where to go!

In South London and Kent, where I lived, there were many venues to explore, where fish up to a pound were frequent captures to float fished maggot, hempseed or worm. Large Roach love lobworms, and many a time on the Medway I have tempted such fish on the bottom with a large juicy offering, in mid winter too in icy conditions.

In my group of young aspiring anglers we all wanted to catch bigger and better Roach, and in 1964 the London Reservoirs, like Staines, Molesey and Walthamstow started to feature in the Angling Times with regular reports of captures of quality Roach well over the magic 2lbs mark. The London Specimen Group secretary, Peter Butler from Colindale, North London, wrote about their group's captures from the giant Queen Mary Reservoir at Staines, near to London Airport (Heathrow) and we read of their achievements each month in Fishing Magazine. Their members, anglers like Ken Galloway, Peter Grundle, Herbie Green and Dave Hugill were catching huge numbers of fish up to a massive 3lbs 3ozs, and we in the Kent Group wanted some of the action in 1965!

Rather than follow them to their west London venue, where we young upstarts from Kent would be less than welcome, we found out that another group of four Victorian reservoirs near Barnes on the banks of the Thames also held a good head of specimen Roach and Perch. The former Barn Elms group of four reservoirs resembled a 'battenburg cake' if viewed from the

air, and each of the man made lakes were about 20 acres in size and raised up about 25 feet on a grid like embankment. The site was reached off the road to Hammersmith Bridge, and ran by the old Metropolitan Water Board, with yellow London brick steps, walkways and treatment works in traditional water works fashion.



*A good brace*

*Typical 2lb roach during our campaign*





Brian Hepple photos Grahame with a good brace of 2lb ers!



It was almost opposite Fulham's football ground, on the other side of the river, and the roar from the crowd could be clearly heard if Fulham scored, which wasn't very often in those far off days on a Saturday afternoon. How times have changed! The boat race course was also on the Thames next to the embankment of the first pair of two roach filled reservoirs, but was always run during the close



The London Wetlands Centre



season in early April, so I never got to see it! Barn Elms Reservoirs were built in late Victorian times, about 1875, near to the site of an old manor house called Barn Elms House which burnt down in 1954, and here they remained until 1975 when a project promoted by Sir Peter Scott to form a bird reserve like the Wildfowl Trust at Slimbridge was developed on the site. Today it is called The London Wetlands Centre, and nothing remains of the old reservoirs, totally redeveloped with islands, habitats and walkways for the people of London to enjoy. Sir David Attenborough was also a trustee of this project which incorporates a new housing development by Berkeley Homes. Quite what happened to all the huge Roach and Perch I don't know, but you can't fish there today, it's purely a wildlife habitat rebuilt between 1996 and 2000. There is a Visitors Information Centre, but little indication of the great fishing had there in the past. Hammersmith Bridge is still closed to vehicles as the old suspension bridge is in a bad state of repair, so don't come from the north side to visit this attraction! The old Victorian reservoir was deemed redundant when the vast new London Ring Main was completed in 1975, and the concrete sides were broken up, quite why this was done I don't know, as vast numbers of birds always did visit the old site, but the water was deep, about 15 feet I would say, and they needed shallows for wading birds and flora and all manner of plants and trees.

Bob Rolph

Bob continues this fascinating glimpse in to London fishing history next month!

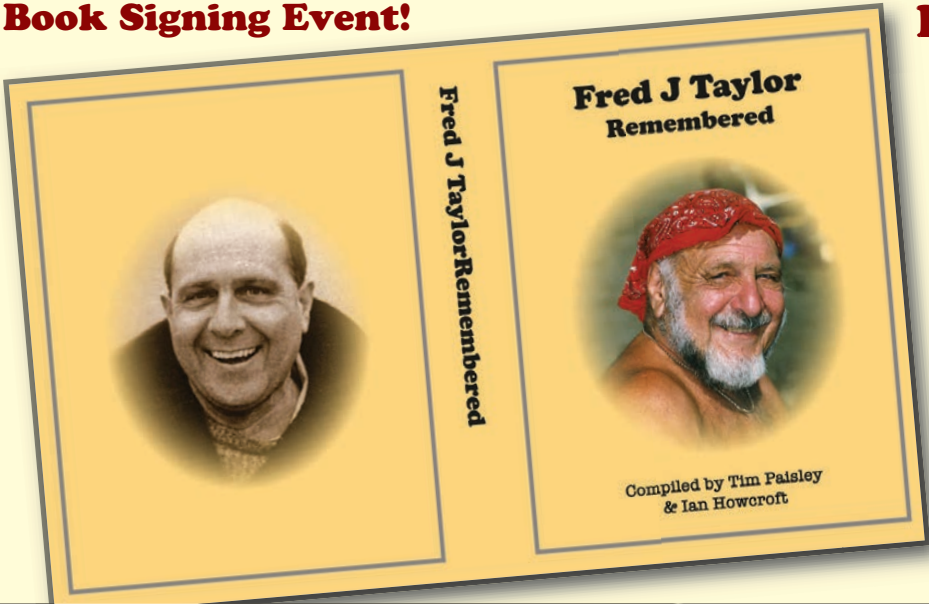
LITTLE EGRET PRESS

BOOK LAUNCH  
& SIGNING

at  
Les Webbers  
'Angling Projects' HQ  
Welley Road  
Wraysbury SL3 9QA

on  
Saturday 9th April 2022  
10am to 4pm

Special 'Fred J Taylor Remembered'  
Book Signing Event!







**W**ith most Covid restrictions now having been lifted, it has been good to feel that we can start to function in a normal way again. Unfortunately for me that has included getting stuck in the traffic at the Dartford crossing for two hours, after a trip to Suffolk, when the bridge was closed due to high winds and then, almost ending up in a ditch next to a layby near the river, while trying to get the car further off the road during an evening's Chub session!



I was indeed fortunate that a passing dog walker stopped and came to my aid and with the help of my large pike unhooking mat, which we put under the front wheels to prevent me slipping backward, I ended up safely back on the road again. It was however a close thing and I avoided ending up in a very deep ditch filled with water! I went on to fish for a few hours and got a nice Chub just after dark, and missed a couple as well. It had been my intention to get there a bit earlier in order to have a go for the pike with deadbaits for an hour or so but 'the best laid plans' as they say, and I only managed to start actually fishing just before dark. I had previously been held up and did not arrive until later than expected and this, along with my haste to get fishing, probably contributed to my close shave on the ditch front! As I have said before, sometimes these combination trips can be quite interesting and productive.

I am now concluding my pike efforts for this last winter period and I am quite pleased with my efforts overall, having landed about twenty five fish mostly doubles with a fish of just over 21lbs as the biggest. The best part of all this has been that many of them this year have come from new waters and I really like the feeling of exploring, because it feels like it is opening up new possibilities for future fishing and also, it fits nicely into my idea of the 'spirit of angling' if that is the right way to put it - with plenty of opportunities to learn new tricks, techniques etc.



**New stretches of river are interesting**

because I recently lost two fish in snags on an unfamiliar stretch of the Medway when they found their way into sunken branches. Fortunately both times, I managed to get my end tackle back with the single barbless hook embedded in a branch. This is another advantage that you have when using a strong braided line for pike fishing, as it allows you to be fairly heavy handed when necessary and often ends with the snag (frequently branches or dead pads being removed) - which would not happen with lighter nylon lines. This is a really important aspect of Piking these days. In my view, losing fish and in particular leaving them with the trace and end tackle is something that should be avoided at all costs, where at all possible, and the first step toward this is strong lines. The mild wet and windy late winter weather has inspired me to get out my feeder rods and start my spring fishing activities a bit earlier this year. As yet, I have only been out once and this was a bit of a combination trip, as the main idea was to drown a few more deadbaits. I certainly did that, but unfortunately it was a case of 'nil points' on both counts, but at least I got the ball rolling and as I said previously, I felt that a sense of normality was returning!

*Best Fishes, Bob Morris*



**Bob's recent best**



**Fishing near to snags in a new swim can be a problem**





## Piscatorial Politics

Unfortunately, I have not got all the info at the time of writing, but there has been a substantial oil spillage into the Medway at Yalding. You can probably find out more on this by 'Googling' it, but I can at least tell you what I have found out through the official channels.

This incident was caused by the 'Fly tipping' of a large quantity of engine oil into a ditch in the Yalding area. This then found its way into a nearby stream and then on into the Marina/boatyard at 'Hampstead Lock'. This was a major incident and it was indeed fortunate that a member of the public reported it quickly to the EA,

who responded by putting a boom across the river entrance in an attempt to stop the oil getting into the main river. This was largely successful, but a fair amount had already got out and this affected wildlife further downstream - particularly Swans, Geese and other waterfowl, many of which were caught and taken away for cleaning. A general clean-up operation is ongoing, although at the time of writing this, I have no further information about fish deaths or anything else.

At the moment I am trying to find out more and will report further on this issue in the next mag.

The whole situation with regard to the constant pollution of our rivers is a total national tragedy - without incidents of this nature occurring, as I doubt that the culprits will ever be identified or brought to court over it!!

**Bob M**




Waterfowl are the first to suffer when an oil spill occurs




EA boom across Marina to stop oil getting into the river

Photo courtesy of the EA



BobMorrisCustomRods

 BobMorrisCustomRods

 Bmt1@Btconnect.com

 01322 866015

**\*Watch Out For Bob's New Book\***

**'Details Coming Soon'**

**All types of rods, built, renovated or repaired!**



**CANTERBURY**  
PLUMBING SUPPLIES  
VISIT OUR  
AFFORDABLE DESIGNER  
BATHROOM SHOWROOM  
@ wincheap ind. est.

**Warren White**  
**07837 758923**  
[www.coachingcoarsefishing.co.uk](http://www.coachingcoarsefishing.co.uk)

**Fishing  
for Schools**  
**020 7840 9212**  
[www.countryside-alliance.org/the-foundation/fishingforschools/](http://www.countryside-alliance.org/the-foundation/fishingforschools/)

**HADLOW  
COLLEGE**

**Angling & Anxiety**  
HIT LIKE &  
SUBSCRIBE

**Henfold  
Bait & Tackle**  
**07956 043922**

**SCOTTIES Fishing Tackle**  
25 Southwick Square  
Southwick BN42 4FP  
01273 592903

## Hello and welcome to the March edition of the Junior Informer!

Unfortunately, the weather didn't play ball during the school half term break! The unsettled and stormy conditions weren't very favourable for fishing or many other outdoor activities. We now hope that the weather settles down as we head in to Spring and we begin to feel a little warmth from the sunshine. I mentioned in the Sea Informer section that the current sea temperature around our coastline is about where it should be at this time of year. With lots of regular reports on the television and in the newspapers about the climate change, I wonder what you think? Do you spend much time at school working on climate change subjects?

The temperature of the water in our lakes and rivers is still very low and the fish do not tend to feed as much or as often as in the summer months. You very often find that the last couple of hours of daylight is probably the best time to get a bite. The fish will have a brief period of feeding before nightfall when they return to a dormant state again trying to expend as little energy as possible. By fishing small amounts of natural baits, the fish will be more inclined to respond. Also try and 'fine down' your line strength and hook sizes to make everything as inconspicuous as possible. As we head through the next month or two and temperatures begin to pick up, you can then begin to introduce a little more feed and gradually beef up your tackle and rigs. Even with light tackle, you will be surprised what you can land on well balanced light gear! Don't forget to send in your catch photos by email or Facebook message and I do need parents' permission to publish your pictures.

*Enjoy your fishing! Barry Reed*



## JUNIOR INFORMER PHOTO ALBUM

Each 'Ready, Steady, Fish' pack contains:

- 400g of shelf life Squabs • 3 x medium swivel Stonze weights of 2 – 2.5 ozs • 3 x Gripz hair rigs (for 14mm baits use size 8 Gripz, 18mm baits use size 6 Gripz) • 500g of Carp Crush groundbait/method mix
- Anti-tangle foam • Boilie stops • Packet of Gammarus shrimp
- Packet of 15 x 10mm pop ups

The fantastic pack is worth over £20! All you have to do to be in with a chance of winning one of the 'Ready, Steady, Fish' packs is to send your Catch Photo to the Freshwater Informer by email or by message on the Facebook page!

**WINNER**



The winner of the PALLATRAX  
'READY, STEADY, FISH' PACK  
for FEBRUARY is...

**DENIZ HUDAVERDI**  
*well done!*



Molly Cooke - first pike at Cottington



Bruce Bolton - 9lbs Iden Wood Fishery



Harry Beany - 14lbs 12ozs Coombewood Fishery

**HENFOLD BAIT & TACKLE** Henfold Lakes, Henfold Lane, Newdigate RH5 4RW  
**TACKLE HIRE AND TUITION AVAILABLE**

**07956 043922**





**Great day for Pharis!**

Leigh Harman sent in this report after a great day's fishing at Knightingales Fishery at Stone with Pharis:



"I took Pharis to Knightingales Fishery to do some quiver tip fishing for the chub and a rod out for a carp or two. He managed two carp, the biggest a mirror at 12lbs 8ozs and a smaller one at 4lbs 8ozs. Pharis had never caught a chub until today when he landed this fine specimen (see front page and below) at 6lbs 2ozs. He had a fantastic day and was over the moon with his captures!"



**Great session for Fred!**

Stephen Woodbridge, Fred's dad, sent in this great report of a most memorable day for them both on the Royal Military Canal!



"A short afternoon session chasing perch using small crankbaits turned in to a bit of a red letter session for us!"



Although no target species were caught, we hooked eight pike landing 6 of them of which Fred had 4. The last fish was a new PB for him of just over 18lbs. Once again a very happy boy...!!"

**Well done Fred, top angling and congratulations on a great new pike PB!**



**Big doggie for Dougie!**

Peter Shoulders, grandad of Dougie, sent in this report of his grandson's recent big dogfish caught from a Sussex beach:

"This is my 5 year old grandson Dougie Shoulders on Shoreham Beach, West Sussex.

It was his first night fishing adventure with his grandad and he caught this dogfish on a paternoster rig with king rag tipped off with squid."



**Create your own wormery!**

by Furnace Brook Fishery

Did you know that worm castings provide one of nature's very best nutrient-rich solutions for your every plant growing need? A wormery is also an effective and easy way to compost your at-home food waste!

We've based our wormery on a free flow design, constructed from repurposed materials found from leftover projects around the site. Corkboard provides insulation for the pallet board walls with an old grate at the bottom to allow easy access to harvest the castings! The internal mesh creates an extra obstacle against unwanted rat opportunists!

It takes a few months to establish a wormery and create a healthy worm colony. We started by finding our brandling worms amongst the manure heap, these earthworms thrive in rotting compost and vegetation and are adapted perfectly to feeding on the bacteria that break down food scraps. The food scraps need to be finely chopped and spread across as a top layer for the worms to process, this can be done little and often and in accordance to how much the worms are happy to munch through. If you notice mould appearing on the food you've already put in, it's an indication that they aren't managing to process it quickly enough.

It's a nice way to incorporate the permaculture principles of zero waste and take an easier to maintain approach with a small and slow system. Managing your wormery is simple, letting the worms do the hard work and leaving you with a really useful end product whilst eliminating your food waste.

If you're interested in having your own, but don't want to make one, 'The Hungry Bin Worm Composter' is arguably a worthwhile investment!. Call Furnace Brook on 01435 830835.





# March Update

by instructor Warren White

The River Cray



*We have been using Hall Place over the past few months as it has been something different from our usual way of coaching in the Winter. We normally look at using indoor facilities, mainly at our main base at Grove Farm Fishery, Hadlow College, but due to a number of factors, Covid being a main one, we are better being outdoors than indoors, and the fact that the weather has been really mild this winter has guided us to try and carry on fishing throughout the winter.*

The River Cray has been a good choice as, like most rivers, there are always a few fish to be had, even on the coldest of days and I like the fact that our students are learning the new skill of fishing in running water and learning about one of their local waterways. With all that in mind I thought you may like to share some of the sessions that our students have enjoyed at Hall Place over the past few months!

## 20th January 2022

"Another really cold start to the day! We were with the Rowhill boys at Hall Place today, first off we had a walk along the river looking for fish holding areas. Along the way I met a couple of volunteers from Friends of the Shuttle doing some plant maintenance and a volunteer litter picking, what a good job they do. We then went to the Cafe to have a warm up and do some indoor fishing skills with the boys, today we were looking at making a Whip rig.

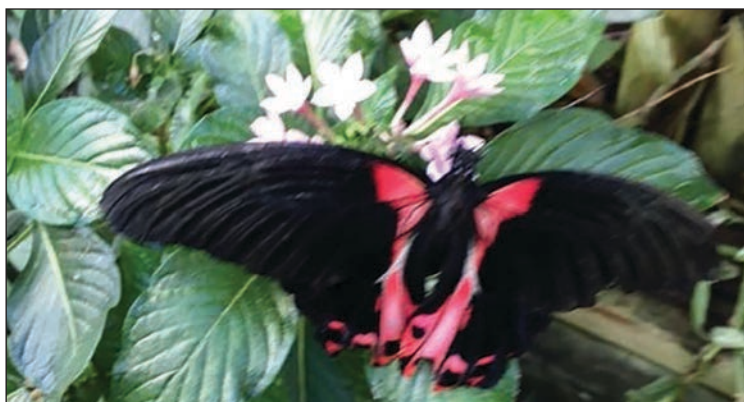


The second part of the session was fishing. After a deep frost over night I wasn't expecting much, but in a short session we caught a few roach and chub, nothing big, but something to keep the students interested."



## 8th February 2022

"A visit to Hall Place at Crayford today with the boys from Rowhill school on their BTEC Fisheries course. The River Cray that runs through the Hall Place grounds is running quite low at present, we really need a bit of rain. The fishing is not easy at present, but





you can still catch a few silver fish, if you fish the features. While at Hall Place today we visited the Butterfly House, part of the lads' course is learning about life cycles and the butterfly is a good insect to study as, like the maggot, it has the same lifecycle egg, larva, pupa, adult. In the emerging cage we were able to see eggs, caterpillars and pupae, which were fascinating to see. What makes the butterfly outstanding to any other insect are the brightly coloured wings, this is the main factor that makes the butterflies one of the few insect groups that are attractive to the general public."

10th February 2022



"The River Cray is one of only 200 chalk streams worldwide and 85% of them are in southern England, a little bit of trivia there, but something that always makes me proud to fish this river! Our session today was at Hall Place, Crayford, a lovely park to visit, with a historical house, Gardens, Cafe, Butterfly House and Jams Owls. It was Rowhill School's BTEC fishery course today and we started in the Cafe doing some paperwork towards the course, then had a fish on the River Cray that runs through the park. The river is running low at present and really needs some rain. The fishing started slow, but eventually we caught a roach which was snaffled by a Pike, we had them both on for quite a while before the line parted. Moving up to a nearby bridge we managed to catch some Roach, Dace and Gudgeon, which kept the lads happy."



We offer  
Level 1, 2, 3,  
FdSc, BSc,  
full time  
and part  
time  
courses!



Our students leave  
us industry ready  
for roles worldwide  
with careers in  
the Environment Agency,  
CEFAS, Fish Farming  
& Fishery Management  
sectors

# FISHERIES MANAGEMENT & AQUACULTURE

**Hatchery Includes:** 50 Aquarium Tanks & Recirculating Aquaculture Systems  
**Species Include:** Carp, Koi, Tench, African Walking Catfish and Nile Tilapia

2 Acre mixed coarse lake • 2 Acres of growing-on-farm ponds  
Strong links with industry • Excellent progression and career options

If you're passionate about fishing or fish keeping and want to make your hobby a career, talk to us today! Visit [www.hadlow.ac.uk](http://www.hadlow.ac.uk) or visit one of our open events!



# March Update

by Director Charles Jardine



*I know the weather has been ghastly!*

*If you haven't been battered by an alphabet of storm names, then the chances are, you will be, one after the other. There are a good many reasons to be, just a little bit despondent at the moment. If a storm doesn't catch you, then the chances are, an electricity or gas bill will..... !*

*Yup: not great.....however!*

Photo courtesy of Nicky Wicks

I am as happy as ...(use whatever analogy you wish) as it is that special time of the year, which is one of the key parts of the Fishing for Schools calendar; the point when, we tell schools they have a place in this year's tranche and all the hustle and bustle that goes along with that announcement – coaches to tell, fisheries to book, plans to be made and new young anglers to bring into our fishing world. It's exciting!

This year, we have over thirty schools operational – that is lot for a small organisation such as ours, and huge commitment from us, the coaches, and all the elements which form the whole operation. We could not do any of this without generosity – be that monetarily, inspirit, in kind or just plain goodwill and enthusiasm.



The embodiment of all – and I mean ALL – of these key areas are the Peet brothers – Gary and Kevin. The extortionary force that has made the Tackle Box an international name in the Carp, specimen and predator world. With their help – and I really do mean significant help – we will have their massive support which means that we will be able to deliver so much – both in terms of actual and practical delivery support, but also in the wider context of promotion. Oh, and some very smart branded and sparkling new Coach clothing.....Not that I am suggesting for one moment our coaches are not impeccably turned out.....!!! I am also delighted to report a very much closer working relationship with the rejuvenated and increasingly energetic, Angling Trust. More of this to come – and in greater depth;

but fishing trips with the recently installed Regional Development Officer for the Southern region, Graham Mabey, have proven exciting and crucial for both training and long term collaborative aims and objectives. I have fished in the past with Graham and can truly vouch for his expertise, also huge understanding of his role



Jamie Cook

– especially where angling education is concerned – and importantly his wholesale commitment to the area and its anglers.

The second trip was with the Angling Trust's supremo – Jamie

Cook. Gone are the days of a faceless leader never coming out from behind an office desk. In Jamie we have a leader who actively fishes – and superbly; and one who also wants to grapple with the issues that all of us face – in all sectors of our sport. OK. Mention roach and trotting in the same sentence and Mr Cook does go a little misty eyed, but the measure of the man is that he wants to understand all branches of our sport's needs, fears and requirements .... And that folks is how we ended up fishing for grayling on a wind whipped and rain lashed day the other week...and darn well, Jamie fished, too. A good angler is Jamie Cook.

So you see, we have massive reasons to be optimistic here at Fishing for Schools. A period to very seriously look forward, too!



Graham Mabey

Charles Jardine



Coarse Fisheries

<b>Beaver Farm Fishery</b> Eastbourne Road Newchapel, Lingfield RH7 6HL	<b>01342 324006 / 07710 656041</b>
<b>Charlies Lakes</b> Steeds Lane, Kingsnorth, Ashford TN26 1NH	<b>07857 539785</b>
<b>Chequertree Trout and Coarse Fishery</b> Bethersden, Near Ashford TN26 3JR	<b>01233 820078</b>
<b>Coombewood Fishery</b> Redbrook Street High Halden, Near Ashford TN26 3JH	<b>07895 679569</b>
<b>Elphicks Fisheries</b> Spelmonden Road, Horsmonden TN12 8EL	<b>01580 212512</b>
<b>Eureka Fishery</b> Nicholas Road Kennington, Ashford, Kent TN25 4AG	<b>07597 879621</b>
<b>Frant Lakes</b> Hawkenbury Road Bells Yew Green, Tunbridge Wells TN3 9AP	<b>01892 616424</b>
<b>Furnace Brook Fishery and Fish Farm</b> Trolliloes, Cowbeech, near Hailsham BN27 4QR	<b>01435 830835</b>
<b>Gabriels Fishery</b> Marsh Green Road, Edenbridge TN8 5PP	<b>07730 066088</b>
<b>Greenacres Farm Fishery</b> Sissinghurst Road, Biddenden TN27 8EH	<b>07933 934942</b>
<b>Hartley Lands Fishery</b> Swattenden Lane, Cranbrook TN17 3PS	<b>07703 825064</b>
<b>Hawkhurst Fish Farm</b> Hastings Road, Hawkhurst TN18 4RT	<b>01580 753813</b>
<b>Horam Manor Fishery</b> Horam Manor Farm Horam TN21 0JB	<b>01323 840889 / 07707 759364</b>
<b>Iden Wood Fishery</b> Coldharbour Lane Iden, Rye TN31 7UT	<b>01797 280180 / 07906 232225</b>
<b>Knightingales Fishery</b> Stone – In – Oxney, Near Tenterden TN30 7HA	<b>07941 176205</b>
<b>Kube Lakes</b> 65-87 Plurenden Road, High Halden, Ashford TN26 3JW (nearest postcode) @KubeLakes on Facebook	<b>07742 423681</b>
<b>Latchetts Lakes</b> Tanyard Lane Furners Green, Uckfield TN22 3RL	<b>07517 646299 / 07793 654174</b>
<b>Mousehole Lakes</b> Maidstone Road Nettlestead, Near Paddock Wood ME18 5HR	<b>07725 783405</b>
<b>Orchard Place Farm Fishery</b> Pearsons Green Road Paddock Wood, Kent TN12 6NY	<b>01892 838576</b>
<b>Sandwich Lakes Coarse Fishery</b> Sandwich Ash Road (A257) Near Canterbury CT3 2DA	<b>07936 409912</b>
<b>Shirkoak Fishery</b> Bethersden Road, Woodchurch, Ashford TN26 3PZ	<b>07973 410973</b>
<b>The Lakes at Beachborough</b> Beachborough Park Newington, Near Folkestone CT18 8BW	<b>07469 809877</b>
<b>Tricklebrook Fishery</b> Colts Hill, Five Oak Green TN12 6SH	<b>07743 955812</b>
<b>Wylands Farm</b> Wylands Farm, Powdermill Lane, Battle TN33 0SU	<b>01424 893394</b>

Trout Fisheries

<b>Brick Farm Lakes</b> Windmill Hill, Herstmonceux BN27 4RS	<b>01323 832615</b>
<b>Cinder Hill Fly Fishing</b> Membership available from: Email: r.nathan@btinternet.com	<b>01892 770903</b>
<b>Coltsford Mill Trout Fishery &amp; Fly Tackle shop</b> Mill Lane, Oxted, Surrey RH8 9DG	<b>01883 715666 / 07798 605867</b>
<b>Spring Hill Trout Waters</b> Albans Farm, Romford Road, Pembury TN2 4BB	<b>07951 304515</b>
<b>Tenterden Trout Waters</b> Coombe Farm, Chennell Park Road TN30 6XA www.tenterden-trout-waters.co.uk	<b>01580 763201</b>

Tackle & Bait Supplies

<b>Absolute Tackle</b> 12 Wealden Forest Park Herne Common, Kent CT6 7LQ	<b>01227 636724 / 07809 330854</b>
<b>Angling Specialist (ASH)</b> 29 Queen Street, Horsham RH13 5AA	<b>01403 264644</b>

<b>A.R. Tackle</b> 8 Castle Street, Hastings TN34 3DY	<b>01424 422094</b>
<b>Arun Angling Centre</b> The Old Blacksmiths Yard Water Lane, Angmering BN16 4EP	<b>01903 770099</b>
<b>Bodle Angling</b> Cuckfield Road, Burgess Hill RH15 8RE	<b>01444 247757</b>
<b>Camos Carp Cabin</b> 11 Turner Street, Ramsgate CT11 8NJ	<b>01843 581784</b>
<b>Crowborough Tackle</b> Shop 2, Lexden Lodge, Crowborough Hill Crowborough, East Sussex TN6 2EG	<b>01892 667671</b>
<b>Dens Tackle</b> 73 Dymchurch Road, Hythe CT21 6JN	<b>01303 267053</b>
<b>Eastbourne Aquarium &amp; Reptile Centre</b> 19-21 Seaside, Eastbourne BN21 3PP	<b>01323 730635</b>
<b>Gabriels Fishery Tackle Shop</b> Marsh Green Road, Edenbridge, Kent TN8 5PP	<b>07730 066088</b>
<b>Henfold Bait &amp; Tackle</b> Henfold Lakes Henfold Lane, Newdigate, Dorking RH5 4RW	<b>07956 043922</b>
<b>Jack Frost</b> Reynolds Place, West Green, Crawley RH11 7HB	<b>01293 521186</b>
<b>Just Fishing Tackle</b> 22 Marion Crescent, Orpington BR5 2DD	<b>01689 637477</b>
<b>Kent Tackle</b> Hawkhurst Fish Farm Hastings Road, Hawkhurst TN18 4RT	<b>01580 754422</b>
<b>Medway Tackle Supplies</b> 11 Twydall Green, Gillingham ME8 6JY	<b>01634 475260</b>
<b>NJ Tackle</b> 150 Milton Road, Gravesend DA12 2RG	<b>01474 353998</b>
<b>Orchard Tackle</b> 58 High Brooms Road Tunbridge Wells, Kent TN4 9DB	<b>07494 670328</b>
<b>Polegate Angling Centre</b> Unit 7 Birch Industrial Estate, Eastbourne BN23 6PH	<b>01323 486379</b>
<b>Romney Angling</b> 59 High Street, New Romney TN28 8AH	<b>01797 362889</b>
<b>Sheppey Angling</b> Unit 5, Regis Business Park New Road, Sheerness, Kent ME12 1HA	<b>01795 661089</b>
<b>Shorties Tackle</b> Unit 16 The Glenmore Centre, Whitfield, Dover CT16 3FH	<b>07563 620368</b>
<b>South London Angling Centre</b> 286 Lee High Road, London SE13 5PJ	<b>0208 852 4451</b>
<b>Sues Tackle Cabin</b> The Spice Warehouse Rye Harbour Road, Rye TN31 7TE	<b>01797 225015 / 07980 290247</b>
<b>Tony's Tackle Shop</b> 211 Seaside Road, Eastbourne BN22 7NP	<b>01323 731388</b>
<b>Trade In Tackle</b> Maidstone Road Wateringbury ME18 5EH	<b>01622 814296 / 07941 085011</b>

Angling Clubs & Societies

<b>Bromley (Kent) &amp; District AS</b> PO Box 895, East Grinstead RH19 9ND email: bdas-kent-enquiry@bdaskent.co.uk	
<b>Cinder Hill Fly Fishing</b> Membership available from email: r.nathan@btinternet.com	<b>01892 770903</b>
<b>Fly Dressers Guild (Sussex Branch)</b> New members welcome Contact Simon	<b>07799 484166</b>
<b>Hastings Bexhill &amp; District</b> Postal enquiries to: S.Corke 2 The Sidings, Bexhill On Sea TN40 1RF Chris Pagan	<b>07429 655237 / Steve Potter 07935 268174</b>
<b>Linton Angling Society</b> Jason Tuckey on or email: lassecretary@lintonangling.co.uk	<b>07983 569220</b>
<b>North Sussex Piscatorials</b> email:northsussexpiscatorials@gmail.com Parish Lane, Pease Pottage, Sussex RH10 5NY	<b>07824 443720</b>
<b>Tonbridge &amp; District A &amp; FPS</b> PO Box 131, Tonbridge TN11 8WB	Martyn <b>07802 248861</b>
<b>Wantsum Angling Association</b> or contact via website www.wantsumaa.co.uk	<b>01227 678063</b>
<b>Advertise here for only £60 for 12 months or £30 for 6 months!</b>	



# TROUT INFORMER

## Brick Farm Lakes

Herstmonceux, East Sussex



The recent storms have of course brought some challenging casting conditions, but thankfully our regular anglers have been sensible with where to fish – Brick Lake has been producing some lovely fish, particularly in 'snake cove' where the fish sometimes tend to be for shelter and for a good amount of food.

Generally speaking Cats Whiskers are still proving fruitful, as are Damsels, but we are seeing an increasing number of fish being caught on the more natural looking buzzers, particularly when the sky is clear and the day is bright. We will always offer advice in the Lodge and the log book is available for your perusal.

Notable catches of late include **Mark Baker** who was rewarded with a lovely 10lbs 3ozs rainbow, regular angler **Peter Clarke** who had a beautifully coloured rainbow of 9lbs 12ozs and **Leigh Fullager** who caught a 9lbs 4ozs Brownie on a self-tied green fritz yellow lure.

We are now coming into the prime season for fly fishing for trout, so if you are thinking of taking up the sport, we would suggest a lesson with one of our recommended qualified coaches – details can be found on the Coaches page of our website [www.brickfarmlakes.co.uk](http://www.brickfarmlakes.co.uk). The Spring months and early Summer are a fantastic time to learn as the conditions are really suitable with cold water and an abundance of natural food to mimic with the fly.

We recently held the 49th Annual General Meeting for local club **Eastbourne & District Fly Fishers Club**

– a local group of keen anglers who have a vast breadth of knowledge and are always happy to give advice to newbies.



**Leigh Fullager - 9lbs 4ozs**

They offer a good annual programme of events throughout the year at various venues which are popular – the social side of fishing with other like-minded anglers partnered with the friendly competitions mean it is a great club to be a part of, and with full membership being only £15 for the year (reduced for juniors) it's great value. Please contact the club if you are interested in joining them – we are proud to be their home venue for another year and look forward to the year ahead with them. Email [edffc2016@gmail.com](mailto:edffc2016@gmail.com) and give their Facebook page a Like to be kept up to date!



**Mark Baker - 10lbs 3ozs**



**Peter Clarke - 9lbs 12ozs**

## Brick Farm Lakes Trout Fishery

Prices start from £32 for 2 fish  
Vouchers, coaching & tackle hire available  
Corporate & group bookings welcome  
with food options available

Set within the stunning East Sussex countryside, Brick Farm Lakes is a friendly family run Trout fishery comprising 4 lakes stocked with Rainbow, Blue, Golden and Brown trout, from 2lb upwards, including some double-figure sizes to challenge our anglers. Set back from the road, almost in a secret valley of it's own, we have a superb oak-framed lodge overlooking Brick Lake. The lodge provides a warm and welcome space offering complimentary tea & coffee for anglers, along with homemade cakes and other refreshments.



Tel: 01323 832615 / 07730 277118  
[www.brickfarmlakes.co.uk](http://www.brickfarmlakes.co.uk)

The Fishing Lodge  
Brick Farm  
Herstmonceux  
East Sussex  
BN27 4RS





## Tenterden Trout Waters

Tenterden, Kent

Up until the 'visit' from Eunice and Franklin, the lakes were fishing well with some nice fish coming to our visiting anglers. Scottie Roberts had this lovely 3lbs 6ozs Blue Trout caught on a Bloodworm on Lake 3. All the lakes will be re-stocked for the start of the Trout fishing season. With the cool water temperature our Trout are fighting well!

Our Lakeside Fishery Lodge is open for you to enjoy providing tea/coffee with our compliments. We have great facilities as you can see from the photo with kitchen/dining/sofa, toilet and lakeside balcony where you can relax. All this adds to a good fishing experience for friends and family at Tenterden. Please call or email [gaynor@coombe-farm.com](mailto:gaynor@coombe-farm.com) 01580 763201 to book your fishing. If we don't answer please leave a message, name and number and we will get back to you asap. We will limit our numbers to 12 Anglers fishing at any one time to create the space you all need. Our booking system facilitates this well and we will continue to use it from now on.



Scottie Roberts - 3lbs 6ozs Blue Trout

**Stay & Fish** Our Shepherds Hut accommodation is open for both Anglers who wish to stay and fish and for other guests who just welcome a short break away. If a staycation is of interest to you this Spring/ Summer then we are offering 20% off our permit prices if you stay in our Ghillies Hut. For more info discover our 'Shepherds Hut' heading on our website with a direct link to Airbnb - click on Availability and Bookings.

Fishing Tuition can be booked direct with Richard Stokes, our Instructor, please email [richard@coombe-farm.com](mailto:richard@coombe-farm.com) if you are interested in learning a new skill in 2022. It is always fun to learn new things in life and you can purchase a lesson as a gift voucher experience for someone special.

For an up-to-date fishing report please go to our website: [www.tenterden-trout-waters.co.uk](http://www.tenterden-trout-waters.co.uk) and click on News/Fishing Report. You will find an Aerial Tour on our Home Page so you can view our picturesque Wealden setting. Please follow us on Instagram and Facebook and visit our Gallery. We are one of the Top 50 Stillwater Trout Fisheries in the British Isles and a Trout Master Water. We offer Gift Vouchers for that special present which can be purchased by bank transfer, cheque or cash. Please call Gaynor on 01580 763201 or email: [gaynor@coombe-farm.com](mailto:gaynor@coombe-farm.com) - we can email/send them out for you.

We look forward to welcoming you here for some exciting Spring fishing at our friendly Fishery.

### TENTERDEN TROUT WATERS

Coombe Farm, Chennell Park Road  
Tenterden, Kent TN30 6XA

*We aim to provide an excellent day's sport in beautiful Wealden Countryside.*

Day Permit £40 = 4 best fish

Half Day Permit £28 = 2 best fish

Catch & Release & Junior Permits available.

Regular stocking of top quality Rainbows, Browns & Blues to 12lbs

TACKLE AVAILABLE TO HIRE

TUITION BY APPOINTMENT

**A TROUTMASTERS WATER**

RANKED IN THE TOP 50 OF THE TOP 100 STILLWATER FISHERIES IN THE BRITISH ISLES

Contact (01580) 763201

[www.tenterden-trout-waters.co.uk](http://www.tenterden-trout-waters.co.uk)



**Tight Lines - Gaynor, Richard, & Audrey**

## Cinder Hill Fly Fishing 2022



With more commercial waters now lost to us, one of Mid-Sussex's best kept secrets, Cinder Hill Fly Fishing is thriving and able to offer some of the region's most natural, unspoilt, top quality and affordable trout fishing. Early membership applications are advisable.

We have 2 separate fisheries each with 3 stream fed lakes which are regularly stocked throughout the season with hard fighting top condition rainbows and browns.

- Annual membership £295 (March-November)
- 25 visits - 3 fish limit
- Guests welcome (uses 1 of your visits each time)
- C&R on specified lakes (early season)

- For details contact:  
R. Nathan  
01892 770903

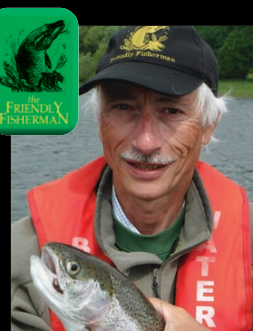


Please quote CH20P when responding to this advert

[r.nathan@btinternet.com](mailto:r.nathan@btinternet.com)  
[www.cinder-hill-trout.uk](http://www.cinder-hill-trout.uk)



See us at the South of England Show



## GUIDED LURE & FLY FISHING DAYS

WITH ANDY LUSH

Andy offers a guiding service for those who want to learn more about 'Lure Fishing' and 'Fly Fishing'

**LURE FISHING** Fish a variety of reservoirs for Pike, Perch and Zander. These days are suitable for beginners and improvers who wish to 'fast track' their way to success. Learn more about lure fishing, the use of boats and fish finders, or just have a FUN day with an experienced Predator angler.

**FLY FISHING** One of Andy's favourite methods, Trout, Carp or Pike can be targeted.

**TROUT** Reservoirs or smaller stillwaters in the South East. These days are suitable for beginners or improvers who wish to learn 'how to catch more fish', or just have a FUN day with an experienced fly fisherman.

**CARP & PIKE** More anglers are looking to find exciting ways of catching their favourite fish. Carp off the top during the summer takes a lot of beating. Pike in the spring and autumn, whatever their size they are a lot of FUN on the fly!

**TO BOOK A DAY** email: [info@thefriendlyfisherman.co.uk](mailto:info@thefriendlyfisherman.co.uk) with your contact phone number and Andy will call you back and discuss details.



01892 826041 / 07951 304515



[www.springhilltroutwaters.co.uk](http://www.springhilltroutwaters.co.uk)





# Winter fly fishing

## Andy Lush - The Friendly Fisherman Lure Fishing

*Spring is not too far off now when traditionally the fly fishing season starts. But with the changing climate we fly fishermen need to adapt if we're going to continue enjoying our sport in the future. The trout don't mind the cold, in fact they're much happier and healthier when the water's cold. I've mentioned this before, but our fisheries need us to fish throughout the autumn, winter and spring if they are to prosper.*

Doing so will give them a reasonable period to earn a living and continue to provide us with quality fishing. At present the season gets compressed into ten or twelve short weeks if we start at Easter. By June, the water temperatures soar and the fish become "heat stressed" and the sport declines dramatically. In my opinion the traditional fly season should be consigned to history. We should view the autumn as the beginning and early summer as the end of our fly season. Take a break from trout fishing in July, August and maybe September, most already do, and try fly fishing for carp or saltwater species such as bass and mullet. Then prepare for the autumn bonanza as trout start fry feeding or gorging on Daddy Long Legs.

### The future?

Fisheries must take the initiative by stocking trout throughout the autumn and winter, publicising the fact too, to encourage more anglers to try fishing later in the year. It's no longer acceptable to expect anglers to fish for residual stock alone. Fisheries also need to provide good facilities such as a warm and dry place to take a comfort break, many I know are already doing this. I recently attended the B.F.F.I. Fly Fishing & Fly Tying show in Stafford where I caught up with many of my fishy friends. At the show I was so pleased to hear from several small water fishery owners that they had already embraced the changes I had suggested. Each year more anglers are trying winter fishing and catching fish, which is always good news. I can confirm that trout pull just as hard in the winter because they are feeding fish with plenty of energy so are in tip top condition.

### The fishing - Where to start?

*My first chance to wet a fly line came at the beginning of January in the company of Pete Groombridge. We visited Hazel Copse near Horsham in West Sussex RH12 3AF [Contact 01403-822878].*

Pete's a busy boy, he mainly match fishes, but like most good anglers he can turn his hand to other types of angling quite easily. The skill Pete's developed while match fishing is a benefit when it comes to fly fishing. Match anglers already understand that fish inhabit the whole water column and often move up and down in the water as conditions change. Being able to adapt your presentation is the key to success. Searching layers of the water in an effort to locate the right 'depth and speed' to retrieve your flies is essential to catch fish. I accidentally sussed the depth and speed conundrum quite quickly when I made a duff cast and stripped my line in to re-cast. As I did this a bow wave appeared behind my fly before everything 'locked up' and the first fish was hooked! So they weren't deep and they would respond to a fast retrieve. I quickly switched from my floating line, long leader and weighted fly combination to a slow sinking intermediate line that sinks at 1" per sec. My team of flies now consisted of a Fulling Mill mini peach booby on the point with a FM Pseudo Diawl Bach on the middle dropper and a FM Cormorant on the top. This allowed me to vary my retrieve speed whilst maintaining my flies depth and horizontal path. When the water's cold I've found fish are reluctant to chase flies up through the water column. My plan worked so well that I caught fish from several areas around both lakes. Pete's casting I noticed had improved markedly since his first outing a year ago! I did say he's busy with matches, but he'd made the effort the previous day to practice his casting and it showed! Pete was still on a floating line and this restricted the speeds he could

use while maintaining the flies depth. He did catch a few fish in the morning but when the fish went off the feed around mid-day his takes became much harder to hook. My presentation gave me so many options in my retrieve. I found speeding up and occasionally pausing mid-retrieve triggered takes from following fish and I continue picking off the occasional fish. As they say 'every dog has it's day' and it was my time to shine!

*My next trip was with Gary Collings when we fished Brick Farm near Herstmonceux, East Sussex BN27 4RS [Contact 01323-832615].* It was much busier than we'd expected, but Brick Farm is one of the forward thinking waters that have already adopted many of the things I've been banging on about, 'Great minds think alike!' We both started on Well Lake which was nicely sheltered from the blustery wind. I elected to start on my slow sinking intermediate line again; I had a Fulling Mill mini peach booby on the point with two small nymphs on the droppers, a FM black marabou Diawl Bach and a skinny FM quill cruncher. I counted my line down each time I re-cast, searching through the layers gradually going a little deeper after a few unproductive casts in an effort to locate the taking depth. My chosen position allowed me to cast across the wind and use the surface drift to swing my fly line into the downwind bank. As my



*A superb winter rainbow*



*Gary Collings in action on Brick Farm's Spring Lake*



line slowly sunk beneath the surface I was able to maintain contact with my flies using a slow retrieve. I was confident my non-stretch Airflo 'Sixth Sense' line would help me feel any takes I might get. I love the sensitivity these lines provide, not unlike using braided lines when I'm lure fishing. They have the added bonus of helping me hook fish at range or deep down.

Gary had chosen to cast directly into the wind which looked rather hard work and it was, but this is where most fish should be if they'd read the same books as us! My luck continued as two fish accepted my mini peach booby in quick succession. I was slowly lifting my team of flies towards the surface preparing to hang them at the end of the retrieve when both fish took. The hang is a very under used tactic on small waters for some reason. Gary was toiling away getting an occasional take, but he was struggling to hook fish. Keeping in touch with his floating line was proving far more difficult in the rough water than he'd expected. I took a break not wanting to catch all my fish from Well Lake so I went off for a chat with Peter Finnis, an old friend I'd not seen in a long while. After a good jaw, I noticed Gary had moved off to another lake. Brick Farm has four lakes to choose from, all having their own charter with some offering more shelter than others. Spring Lake is the deepest water on the complex and this was where I found Gary. He'd opted to fish into the wind again mainly due to the fact that all the sheltered pegs were occupied. I moved onto the next peg to him, well we were meant to be fishing together!

I tried using my intermediate line but there was a shallow shelf extending out from the bank for about two rods lengths. Beyond the shelf was the deep water but, on its edge, there was a lot of soft weed that kept fouling my flies. I had to abandon my sunk line approach and come up with another plan. I changed lines to a Rio 'Midge Tip' Long; this has a 6ft intermediate slow sinking tip section on the front of the floating line. This tip section would 'dig in' and allow me to control the lines drift as it was blown back towards me. I made several casts out into the deep water allowing my team of buzzers to sink, while I just took up the slack line 'dead drift'. As they drifted into the near shelf, where I imagined fish would be patrolling, I sped up the retrieve and lifted my rod. My flies were now heading towards the surface perfectly simulating the vertical path emerging buzzers would make as they prepared to hatch. Sounds great in theory but it didn't get the response I'd hoped for. The wind was howling by now, but despite this, I still noticed the occasional fish swirling in the shallow margins. One broke the surface between Gary and myself just as I was about to launch my line into the open water. I quickly dispatched my flies to where I'd seen the fish. As I attempted to straighten my leader I felt the reassuring head shake of a feisty rainbow trout. It had pounced on my tungsten weighted buzzer positioned on the point. Gary had by now got off the mark too and was also aware that there were feeding fish patrolling the shallows. Another fish popped up, this time to my left and again I quickly covered it and got the same result, "fish on" it had taken the tungsten weighted buzzer. I wondered if the sound of the fly breaking the surface as it landed had alerted the fish to its presence. Both fish had instantly taken my fly before I'd been able to straighten the leader! Gary quickly added the remaining fish he needed to fill his bag and we left for home wind swept, happy and refreshed.

Getting out fly fishing has been a pleasant change from my intense lure fishing this winter. It's been very relaxing and my regular fishing companion James Gardner wanted to join in the fun too. *So we headed off to Chigborough Farm, Maldon CM9 4RE [Contact 07702 244440].* We both enjoy fishing at Chigborough, its two lakes are well stocked and we get a whole day's fishing because they allow 'catch & release'. We can also use teams of flies, droppers, for some reason most small still waters in our area do not allow this option which is frustrating especially when you're buzzer fishing. A team of flies allows you to search three or four potential taking depths at the same time as you drift them around on the wind. I can only assume that fishery owners misguidedly imagine we are trying to catch several trout at a time, like mackerel! I'm not saying we never get double hook ups, but that is not our intention. I know so many ex-reservoir anglers who are put off fishing smaller venues because they can't use droppers.

When we arrived at Chigborough it was shrouded in mist and was freezing cold. We started on Rook Hall where there was hardly a breath of wind but slowly the sun burnt through. As it did we were greeted by the sight of fish slowly breaking the surface as they slowly mooched around sub-surface hunting for emerging flies. Often we saw their dorsal fins or tails just kissing the surface giving away their presence. I started on the Midge Tip Long sink tip again with an unweighted Apps bloodworm on the point, a FM Cormorant on the middle and a FM mini peach booby on the top dropper; this was to hold my team of nymphs up "washing line" style. My first cast just reached the edge of the meagre ripple and while I waited for the sinking section to submerge I noticed the line draw tight, 'fish on' it had taken the Apps on the drop. A couple of casts later and it's a repeat performance as another fish took the unweighted Apps on the drop. James was quick to change to an indicator with an orange Blob fly set at 18" below the surface and a couple of small buzzers at 2ft intervals below that. James had sussed that the static approach was going to be the method. I on the other hand was hoping that fish cruising just under the surface would take my emerging dry fly patterns sitting in the surface film.

James started catching on his static tactic; it proved critical not to move the flies in the slightest to be successful. I chased the ripple hoping this would carry my two emerging flies to the fish, so I wouldn't be moving my flies either. Unfortunately, the breeze picked up and I felt its chill and any chance of seeing surface activity had gone. I retired to my previous sheltered spot, but the fish had stopped showing there too. The bright sunshine had switched the fish off completely even James had stopped catching! Now was a good time to take a break, have lunch and hatch another plan.

After lunch we decided to fish Home Water, the larger of the two lakes at Chigborough. By now, I'd set up an indicator with some small nymphs and a weighted Apps bloodworm on the point to hold everything in place. I immediately had a fish as I cast into a shaded area off one of the roadside platforms. This action was short lived so I kept on the move in an effort to find some more cooperative fish. I added another to my tally from the far side of the lake but we were keen to return to Rook Hall after we'd quickly completed our circuit of the lake. By now the light was fading fast and most anglers had left leaving just a few stragglers. I'd resigned myself to fishing the static indicator method at the sheltered end, while James went hunting fish further downwind leaving me to it. With patience, I had to resist moving my flies at all, I started catching fish regularly. I was joined by a couple of young lads who were accompanied by their mother. It was good to see their enthusiasm despite their lack of success. I tried to get them catching fish too, so gave them both indicators and tied up new leaders with droppers for them. They found the static approach too demanding, they just couldn't resist casting at rising fish and who could blame them. I finished on a high catching several more trout including one very nice rainbow of around 4lbs or 5lbs. James added another couple of fish to his tally but found it harder to tempt them in the ripple for some reason. We'd both caught enough though to keep us happy and eager to return, ASAP!



*A magnificent Chigborough rainbow*

*Til' next month, tight lines*

*Andy Lush*



# Sea Informer

is kindly sponsored by



**Medway and Kent Sea Fishing Group**

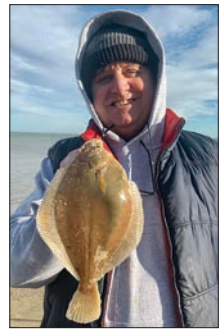
'Visit our page for chat, tips, news and members' catch reports!'

**Sheppey Angling** UNIT 5, REGIS BUSINESS PARK, NEW ROAD, SHEERNESS  
ME12 1HA 01795 661089 / 07902 092595



*Please support your local tackle shop!*

Fishing around our coastline has been pretty tough going in recent weeks. The plaice fishing had really begun to get going in Sussex before the weather changed and put a stop to that! Generally, it has been a real 'scratching month' (typical February!), but better numbers of rays are gradually beginning to show. The whiting have definitely thinned out and even the dogfish numbers have decreased. A few squid have been caught during the calm clear periods and herring and sprat shoals have been reported in the Channel in good numbers. I recently saw a photo of hundreds of cormorants off Folkestone diving and feeding frantically, no doubt on a herring or sprat shoal that had ventured close inshore. The sea temperature is currently between 7 and 8 degrees which seems to be a little above average temperature expected for this time of year. Don't forget to send in your catch photos and reports for the Sea Informer section!



#### Sheppey report courtesy of Sheppey Angling

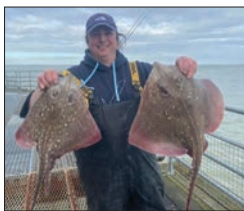
"The rays have been showing in increasing numbers in the past couple of weeks which is promising. They seem to be more prevalent at Warden Bay and fish baits are a must. Flounders have also been more active with better numbers showing, although the dabs have been a little scarce. School bass are also being caught in better numbers with a number of fish around the 45cms size. The whiting now appear to have left us here on the island." **For all your quality bait, tackle and top advice, call Sheppey Angling on 01795 661089.**

#### Thanet report courtesy of Fisherman's Corner

"With whiting numbers really falling off, different species are getting a chance to feed!! A few rays showing along with the odd flounder and better sized plaice. Lugworm and ragworm fished

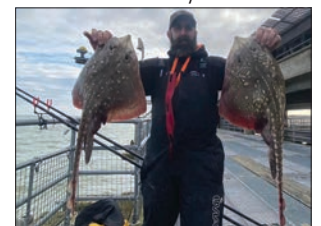


close in for the smaller species and bigger fish baits 40 to 60 yards out for the rays. For any info about fishing Ramsgate or surrounding areas, please call **Fisherman's Corner, your local tackle shop situated 5 minutes from East Pier, on 01843 582174.**



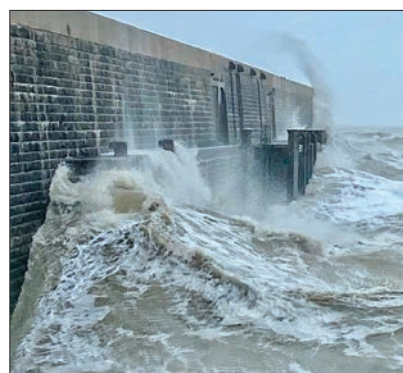
#### Deal report courtesy of Channel Angling Deal

"Deal has been fishing very well at moment especially from the bottom deck of the pier. There have been quite a few thornbacks with one angler managing twelve in one day! The bait for the rays is bluey or herring. Try elasticating a sprat to your main bait, it can sometimes and it's worth a try. Also there are plenty of dogfish still present, but the whiting are shrinking in size and numbers so not plagued by those so much. I did hear of the first bass of the year caught on the pier this week, albeit small. The beaches are pretty much the same with rays at the Sandwich end and plenty of dogfish. Dabs seem to have made their exit. So next on the agenda will be the smoothhounds, they won't be too far away now! So get the rods out and good luck, take care, Fred." **Call Channel Angling on 01304 373104 for all your bait requirements and top local advice.**



#### Dover report

The long awaited reopening of the Admiralty Pier was planned for just after mid February, but Storm Eunice invited herself and spoiled the party. All fishing was cancelled due to the atrocious conditions. The new date of end of February was rearranged and conditions (at the time of writing) look far more settled! Full details on how to fish the Admiralty Pier can be found on the Dover Sea Angling Association website and their social media page.



#### Folkestone report courtesy of Folkestone Angling

"February, by tradition, has always been a 'scratching' month and this February has been no different. The fluctuation in air pressure has not helped as plaice were beginning to show when the water was clear, but recently the pressure has dropped and we have experienced some rough weather which has coloured the water significantly. The good news is that we are seeing the ray numbers increase and we are expecting more to be caught once things settle down. The whiting are still present but in much reduced numbers. Dabs, pouting and dogfish are also making up anglers' bags. The crabs should begin their moult soon and we can then expect numbers of hounds to move inshore." **Call Folkestone Angling on 01303 253881.**

#### Hythe report courtesy of Steve Bates

"Fishing all along the bay has been relatively quiet of late with not a huge amount to report from the beach. Before the recent big storms, Dudley and Eunice there were a few plaice starting to show at the back of the swimming pool at Hythe but the storms have pretty much scuppered many plans for anglers to get out and fish. These big storms will have certainly changed the way the beaches will look and will have really churned up the seabed washing all the worm and shellfish up from the sand, a perfect time, as like after any storm, to get down on low tides and collect free bait for the freezer. There have been a few matches along Hythe



with plenty of whiting, dogs and dabs being caught. The rays are still not about in the numbers they normally are, but anglers are still finding them, pulley pennel rigs baited with squid or fish baits will help you find them. Two hook flappers or short snood clipped down rigs baited with fresh or frozen lug tipped with squid or small pieces of fish will catch most other species. Hopefully now as we start to enter into spring we should start to see some of the early spring/summer species move in, on some of the nicer days and evenings as the water clears we should start to see the plaice returning in numbers, long up and over wishbone rigs baited with half a fresh worm should help you find them and also can be a good time to start targeting bass on lures from the rocks or a live bait dropped in behind the breakers. **Local tackle shops are Dens Tackle 01303 267053 and Best Buddies 01303 487144.** Keep safe, stay well and please remember to take your rubbish home. Tight lines, Stevie.

## Eastbourne report courtesy of Tony's Tackle

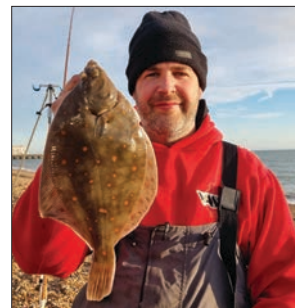


"This month has been excellent for big fish. Peter Cornwall landed some huge thornbacks from Pevensey and Tony Wright caught a huge conger around 17 lbs. Local match ace Steve Kerr battled a conger in rough seas in a recent Sunday morning Tony's Tackle match at Langney Point. The eel was 130cms and weighed around 16lbs. He amassed a massive 380 pts and won £70. There have been countless dogfish on the night tides with 3 hour matches producing over 14 in some matches. Whiting continue to show, but in smaller numbers. On the calm seas and clear conditions some great plaice have succumbed to black lug at Seaford and Langney Point beaches. We have created a new holdall for measuring big fish, it's called a 'HOUNDALL' and you can purchase one for £29.99 on an introductory offer.

It enables you to photograph and measure fish in club comps or species matches with ease. We would like to

thank Tronixpro for letting us have their holdall which we think is the best one, see our ad for details. Eastbourne boats have been hampered by high winds, but good to see Deep Blue back in action with new owner and skipper Simon Logan. Manx Belle has landed some good fish and there are reports of big shoals of coalfish on the house, these are something that have not been caught in the

Eastbourne area. Panther has had rays, bass and a few cod from the Light Tower on mackerel. Don't forget to order your bait as it is in short supply." **Call Tony on 01323 731388 or 07821 514853.**



## THE MAN HIMSELF - TONY KIRRAGE!

*South Coast angling legend Tony Kirrage has written a wonderful account of his lifetime's involvement in the world of fishing. Tony's book is a fascinating account of his angling adventures, not just on the beaches and boats of his home county, but across the world. The book has already sold exceptionally well as scores of anglers seize this unique opportunity to look back at*



*Tony's memories, many of which will stir the reader's memory bank as well!*

*The book is available from just £25.99 and you can pick up your copy from Tony's Tackle, 211 Seaside Road, Eastbourne BN22 7NP.*

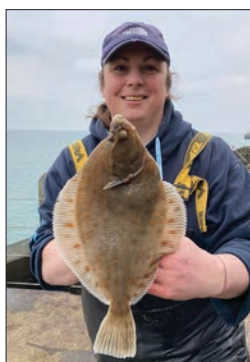
*Alternatively, call the shop to order on 01323 731388 or email [tonystackle@mail.com](mailto:tonystackle@mail.com)*

*Don't delay, order your copy today as numbers are limited!*

## Worthing report courtesy of Prime Angling

"The strong winds have caused considerable damage to the West Arm at Shoreham which is closed to fishing until repairs have taken place. The landing stage at Worthing Pier has also seen grates lifted up and dumped into the sea so this will be not be opening up anytime soon. The rough seas have also removed vast amounts of shingle and sand from the beaches with large areas stripped down to bedrock. Also local beaches have been smothered in Slipper Limpets washed up in the rough seas. With very few breaks in the weather over the last seven days there is not much to report fishing wise as venues have been forced to close and the beaches have been close to unfishable.

When anglers have braved the weather a few Congers have shown up with fish up to low doubles landed to big fish baits or Whiting live baits. Some eels have shown from Worthing Pier, Shoreham Harbour and Selsey East beach. Always remember its worth taking a drop net if you are fishing from a structure such as Worthing Pier as hooking a big fish is always a



possibility in these conditions. Whiting and Dogfish have shown throughout the area both in daylight and darkness and can be caught to most baits especially from Worthing Pier.

Rockling are also present in vast numbers and caught mostly on worm baits and smaller hooks. This year the only local Ray reports have been from the Eastbourne area with a few Thornbacks as well as a brief run at Pagham and Selsey. Undulate Rays should appear within the next month or so as well as a few more Thornbacks. Conditions have not been ideal for flatfish although sheltered beaches towards Pevensey have seen a few Plaice and Dabs. Flounders are still present in the rivers and Kingston Beach can fish well for Flounders especially in front of the Bus shelter using red rag for bait. Some good size Bass are still showing inshore especially from the beaches when there is reasonable surf.

**Call us on 01903 821594 for all your bait and tackle.**

We strongly advise to pre-order your bait as early as possible to avoid disappointment."



## HASTINGS report courtesy of Hastings Angling Centre

The prolonged stormy spell has kept fishing to a minimum with few opportunities on the beach or in the boat. All the beach matches for the weekend following storm Eunice being postponed as it simply wouldn't have been safe, such was the sea state. Only the odd day for the boat has been possible and even then there has been a substantial swell. Several pollack over 10lbs being reported. Shame really as this is the prime time for big pollack on the deep wrecks. When it has been calm enough to beach fish there have been plenty of fish about, with dogfish whiting dabs and plaice showing.

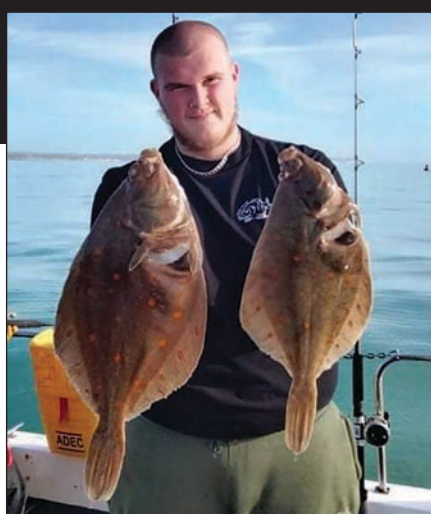
Prospects for March, pollack main boat target for at least the first couple of weeks after that most of the pollack will have spawned and started to disperse (and be thin). Once the equinox has passed spring fishing really begins. As the winter has been very mild and the sea temperature held up well, it is likely the crabs will start peeling quite early and bring the first of the smoothounds inshore. Rays also should come in as well. In years gone by there used to be a run of codlings around the big spring tides in March, but I doubt if more than the odd one might show now.



## RIGHT TIME, RIGHT PLAICE FOR HARRY!

Harry Glover had his first ever boat trip with his family out of Peacehaven with the intention of targeting the plaice.

Harry struck lucky and managed these two fine fish!



## HUGE SKATE FOR RHYS!

Medway angler Rhys Caleno made the long trip to Scotland in search of his very first skate and he wasn't disappointed! Rhys travelled to a shore mark in North West Scotland and was rewarded with this huge 193lbs common skate caught on a 10/0 up and over rig baited with whole mackerel.

Fishing on Gillingham pier will never be the same Rhys!



## FIRST ROUND OF THE ASSO TEAM QUALIFIERS AND OPEN BEACH MATCH

Fished on Saturday 22nd January in cold calm conditions with a very clear sea after a long settled spell. These conditions added up to very hard work and very few fish being caught even by the top quality beach anglers taking part. 40 anglers fished and not a bag weighing over a pound was weighed in.



Top rod today was **Michael Cox** with a flounder of 450g fishing for Eddie and the Hot Rods on peg 13 picking up £240.00.

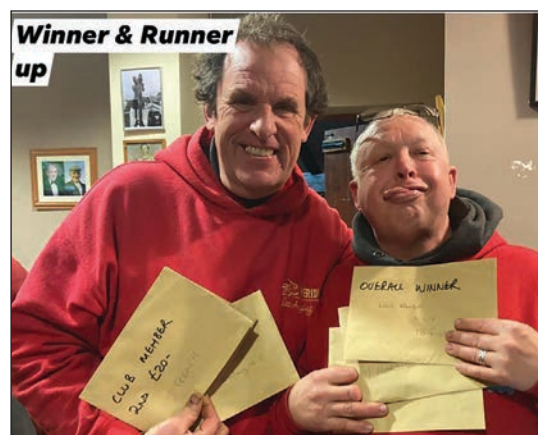


A Zone	1st	Julian French	176g
	2nd	Barry Wilmshurst	130g
B Zone	1st	Billy Johnson	222g
	2nd	Luke Mooring	202g
C Zone	1st	Damian Evans	448g
	2nd	Darren Bond	318g
D Zone	1st	Darren Brooks	336g
	2nd	Ralph Crosby	216g
E Zone	1st	Stuart Wicks	186g
	2nd	Tim Relf	108g



## SECOND ROUND OF THE ASSO TEAMS LEAGUE AND OPEN BEACH MATCH

Fished on Saturday 5th February in a chilly increasing wind which was gusting near gale force by the end of the match. The sea was building to quite rough and lots of colour and a big tide. Fishing was therefore much better than a fortnight previously with plenty of fish caught, with lots of undersize whiting, Dogfish, dabs and rockling making up the rest of the bag.



**Results:** Winner on the day was **Neil Marsh** fishing on peg 8 with 18 fish for a total weight of 9lb 6oz. Runner up was **Julian French** fishing at the New Church on peg 21 with 16 fish for 8 lb 15oz. Best fish was a conger of 70cm for **Martin Jenkins**.

Teams overall after 2 matches		pts		pts	
1st	Century Match	70	5th	Big Red	52
2nd	Eddie & Hot Rods	61	6th	Channel Angling	39
3rd	Hastings Angling Centre	61	7th	Maidstone Angling Centre	35
4th	Saul's Bait & Tackle	60			



# TONY'S TACKLE

**tonystackleshop.co.uk**

E: [tonystackle@mail.com](mailto:tonystackle@mail.com) Tel: 01323 731388

## New Sea Match Dreamcast III Rod

Designed By  
Tony Kirrage

**Superb Value  
£159.99**

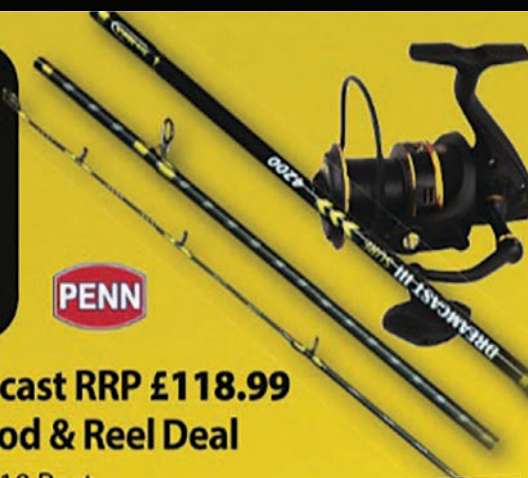


**Penn Gold Rival Long cast RRP £118.99**

**PLUS Dreamcast III Rod & Reel Deal**

**£229.99 + Mainland UK £10 Post**

**SAVE £50!**



*Signed,  
Limited Edition  
Hardback*

**£32.99 + postage**

PLEASE NOTE:  
NOT INCLUDED IN THE DEAL



**New Dreamcast III Rod**

**+ Sea Match Rig Box**

**with 10 top quality assorted rigs**

**+ SEA MATCH FISHING Hardback**

**ONLY £199.99**

**+ £10 mainland UK Postage**

**SEA MATCH FISHING**

**Hardback £25.99**

Postage £4.50 Mainland



**SEA MATCH RIG BOX**

Comprising of 10 Top  
Assorted Professionally  
Tied Rigs Only **£34.99**

We have created a new holdall  
for measuring big fish  
called a 'HOUNDALL'

RRP ~~£39.99~~

**INTRODUCTORY**

**OFFER**

**ONLY £29.99**

**ORDER  
ONLINE  
OR  
PHONE  
THE SHOP**

It  
enables  
you to  
photograph  
and measure  
fish in club  
competitions  
or species  
matches  
with ease.



*We would like to  
thank Tronix Pro  
for letting us use  
their hold-all  
which we think is  
the best one.*



Find us on:  
**facebook**



**PayPal**

**211 Seaside Eastbourne BN22 7NP**



## OUT AND ABOUT WITH ANDY by Andrew Cook

### The drought ends!

December and January can be a bit poor on the fishing front, but with the exception of a couple of West Sussex strays it's been particularly barren for me. My main priority has been 'avoid Whiting' and although they've been a pain, I've noticed that I haven't caught anywhere near as many as previous winters.

With the wind having been in the West all week we picked a location to get it on our backs for our session, Godwyn Road at Deal. As with most of the Deal marks it fishes at all states of the tide, but 'blows hot and cold'. I'd heard of the odd Thornback showing so they were our main target.

I'm on the mark at 1:30 with Paul Hunter joining me shortly after and Richard Steel arriving around 5:30. The water is very coloured with the WNW breeze against the tide creating a bit of a swell. It's HW and the big tide is running so hard into the bay it's actually cutting a furrow in the water about 40 yards out.

I go for one rod with a pulley rig and bluey to start with and the other set up for a bit of scratching using a two hook flapper and fresh blacks. Until the tide run eased I'm having to send my leads 45 degrees to my right and leaving the line slack just to get my gear holding bottom. As I predicted the worm baits are being snaffled up by Whiting and the resident Deal dogfish are enjoying the bluey for the first couple of hours.

The tide run eases and the bites dry up a bit although the whiting being landed are big enough for Paul to take a few home, he was made up with the size of one particular 'sea rat' to the point that he actually weighed one, 13 ounces and declaring it as his PB whiting! He also lands a fairly large pouting. By now the flapper has gone back in my tackle box and I've put another mackerel loaded pulley rig on. The picture below is something that washed up alive in front of us, we aren't 100% sure if it's a Shad or a Herring so please let us know. I picked it up and put it back and it swam off!



dogfish it's been strong enough to pull the lead and is slowly making its way South so I lift into it. Happy Days! There's a bit of weight there and I can feel the fish shaking its head and trying to dig its nose into the shingle. A few minutes later and a female thornback of between 3 and 4lb's is laying on the beach. It's been a long time coming.

The tide starts to flood and the dogfish have thinned out a bit, Paul shouts 'this feels better'. I turn round to see his rod arched right over. I make my way to the waters edge to help Paul land the fish, it's absolutely steaming South to the point that when I finally see it we are fifty yards along the beach. A lovely female, not the biggest length or width wise but very thick. On the scales, and it's Paul's first 'double' and a PB at exactly 10lbs. Very well done mate! A quick picture and off she swims strongly.



We give it another hour or so to see if any more Rays show, but by 10:30 we've had nothing else except a couple more dogfish. It's clear that these are just one or two lone fish and there are no fevers of them about so we agree to call it a day for the drive home.

Not the greatest of sessions for me by any means, but plenty of fish to be caught and at least I've managed to get something half decent. I'm made up for Paul though, 2022 is only a month old and he's had a PB Bass and Ray already, very well done mate!

This mark is very convenient if the weather is blowing from the W or SW, you are sheltered by the houses with free street parking just 20 yards from the mark. Avoid fishing directly in front of the stairs as there is a fairly big snag within casting range, I know as I lost two sets of gear on it! Personally, I find that as with most of the Deal marks, the only species that are there in numbers are the dogfish and whiting, most of the other species tend to be odd fish moving through.

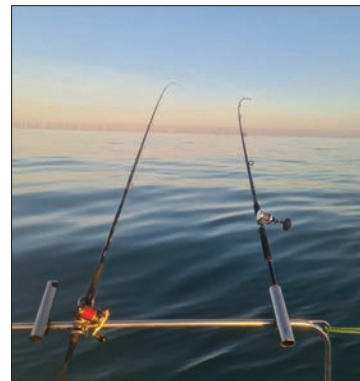
Good luck if you are out over the weekend. We want to try and get on a few Plaice, but unless the wind turns and the water clears it will probably be another Ray hunt somewhere.





**CANTERBURY  
BOILER SPARES****Unit 2, Coopers Lane, Wincheap, Canterbury CT1 3ZD****www.canterburyboilerspares.co.uk**Find us on **f****01227 209079**

Spring is knocking on the door and surely we can't have a winter that has been ok, can we??? We have had no 'Beast from the East' nor many north east gales and the temperatures have been quite reasonable. I'm sure all these factors don't help with the fish as I believe they like the 'old' winters where water temperature is 6 degrees or below and no 15 degrees day temperature in the February sunshine!



However, I am not complaining at all, far from it! The peeler crab are showing already, but this could create a problem, not for the fish generally to have a big early glut, but maybe for the hound fishing later on in the season. A few hounds are already showing themselves, the small ones will turn up first though as it's the same every year for us on the Lady Ann. We always head to Kingsdown or St. Margaret's Bay to try and bag a few just for a change for the anglers. The usual baits are either crab, squid, live prawn or large white shrimp. A pulley rig with 4/0 Koike hooks or running ledger with a 6ft hook snood of 40lbs bs Amnesia line with a 4/0 Koike hook. Alternatively, a bolt rig on a 2ft hook snood, same strength and hooks.

Now on to the hunt! Seeking out the spurdogs still continues when the weather allows. We always have a look in the usual places which I will not disclose obviously! You will have to book up on Lady Ann to discover these marks. My usual rigs are running leger with 50lbs Amnesia line and either 3/0 dog tooth circle hooks or 2/0 catfish hooks or 4/0 wide mouth Koike. If you are lucky enough to hook in to a good fish enjoy it, don't bully it, set the clutch and smile! It's no race to get them in! Rush it and you risk a hook pull if you are not careful. A word of caution if you haven't caught one before! There is a spur on the front of the dorsal fin, it will hurt if it catches, you have been warned!



Conger eels now for us at Ramsgate have generally been the small straps, but there are signs of bigger fish out there. We have spent a bit of money on terminal tackle and beefed up rods and reels and we are starting to land fish up to 25lbs and a few fish lost on the surface have been bigger, one being my fault, we can't always get it right! A conger rig body and hook link of 250lbs bs on a helicopter rig, yes ant Hills I have stolen your rigs, with 12/0 cat fish hooks. Use whatever brand you can get, but we have had good fish on running leger on 70lbs hook line on uptiders and yes they went mental! Just be very careful when boating them, they will go ballistic in the boat so watch them feet.

Skate have turned up now, but we still need some calmer weather as the majority are

close range with fish over the magic double figure mark. Now comes the debate, do you dispatch the fish or return alive? I think if you are going to eat them you should as we sometimes go out and have a series of blanks. However, please be mindful if they are pregnant and try and return them safely and carefully. The choice is yours, keep or return or only take a big male fish if you get the chance. For the rays we use simple gear, a pulley rig with 40lbs hook length and 50lbs rig body. 6/0 Koikes or 4/0 catfish hooks work well. The bites can be very small or very dramatic, just let them take it, don't rush the bites! My preferred baits are fresh mackerel, squid, prawn, herring and the king of all skate baits bluey. I like a

good old chunk,

but if I am bored I will play with cocktails of squid /bluey or herring/bluey or any of the above mixed or even throw some yellowtail worms in the mix!

The whiting are slowly going with the sprats and gradually heading offshore. This period of the year can be a very quiet time on the boat, but some good fish will appear. We just keep fishing looking at bait presentation and keep trying different baits, different rigs and definitely different hook lengths, especially when the tide starts or ends.

Be safe and I hope to see some of you onboard Lady Ann of Ramsgate and no excuses from the ladies, we even have a built in toilet! The ladies we had on a trip mid February were amazed at the onboard facilities and the ladies also showed the boys how to fish!

*Tight lines from Dawn and Jason*



**If you fancy a great day out on Lady Ann of Ramsgate, please call Jason on 07966 273650**



## Return of the Bull Huss by Richard Smith

**A good few years ago I found a lovely spot in North Wales at Gimblet Rock, Pwllheli, where I spent time on holiday with my family. I was lucky enough to go fishing and even luckier to land a sizeable Bull Huss, a photo of which sits proudly at home on my landing wall!**

Several years later and sporting a few more grey hairs, I convinced some mates to take a road trip and returned to the same spot. A few weeks ago I met up with Brian, Russ and Steve for the journey to Wales and we packed all our gear into Brian's van as he had the biggest vehicle to get there altogether. We set off about 9am, it was a very long journey, just over 6 hours, so I felt a lot of pressure hoping that this was the right spot for success. The journey there seemed to take ages, but we



had brought plenty of snacks to keep us going and we forced ourselves to have a cheeky stop off at MaccyD's!

I had called ahead to the angling shop at Pwllheli, called 'Llyn Angling' and spoke to Tom the owner, who advised which bait he thought we would need. Unfortunately, they were short of the recommended bait so we had to pre-arm ourselves from this end.

The bait included Mackerel, Squid, Bluey, Black Lugworm and Sand Eels, which we transported in cool bags with ice packs which kept the bait fresh and partly frozen by the time we arrived. On the way we popped into see Tom to get some local knowledge and to pick up some last-minute hooks and arrived at Gimblet Rock at around 4.30pm. After a quick study of the beach, we worked out the best place to put up our four shelters. We only had an hour before high tide, so we set

up all our rods and reels as quickly as we could. The wind was in a north easterly direction which was fairly strong for the first few hours we were there and during this time we managed to get the usual suspects – being Whiting and Dogfish. We were using pulley rigs with 3/0 and 4/0 Cox and Rawle hooks with 5ozs and 6ozs impact leads.

After we settled in, the hunger kicked in and we set up our trusty gas stoves cooking up a big feast including burgers, steaks and sausages, all washed down with a few cold beers. This was when I really had the chance to fully appreciate how stunning this coastline is. I have always loved Wales, but Gimblet Rock has the beauty of the calm bay on one side, the harbour behind us and as we are in a bay area the views out to sea are amazing with a backdrop of the Snowdonia Mountains.



The wind dropped through the evening which made fishing a lot more comfortable, but the Whiting and Dogfish continued to plague us. Although nice to catch something, we were starting to become a bit deflated as our target specie was the Bull Huss.

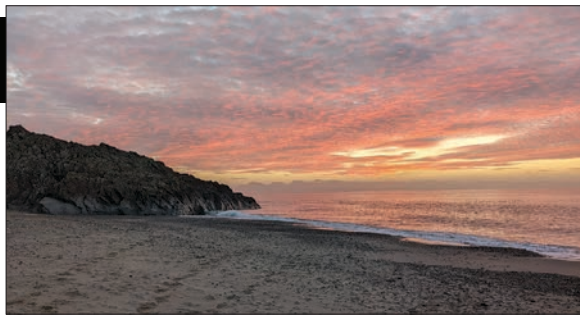
Most of us stayed up throughout the night, although I managed to get a little shut eye. Taking in the view across the sea of the sunrise was stunning and a great start to the day. Due to a pretty unsuccessful night, we felt that we would re-set and search for another venue in the hope of finding our target fish. During the previous night we had spoken to a local

angler and he had mentioned another popular venue, so we travelled a further 20 minutes North and arrived at Trefor Beach. The wind was off our backs and the tide was going out, but the wind became stronger as the day went on. As the tide was going out it was exposing a lot of rocks and uneven ground and because of that we decided to use a rotten bottom system. This system was used as it enables you to shed a snagged lead, but it prevents you from losing the whole rig. The weight is attached by using a weak link that easily breaks away from the rig body if it becomes stuck.



I had some bacon on my stove and I looked up to check my rod when I saw that I had a slight pull, so I had to shout for someone to take over the cooking so that I could grab my rod and strike the bite. The rod tip started feeling heavier and heavier and as I reeled in, my arms started to feel strained due to the way that whatever was on the other end of my line was trying to swim. The fish came to the surface and the lads were shouting 'You got a Huss and it's a good one!', I couldn't believe my luck! Russ grabbed the Huss from the shallow water and gave me my prize. After unhooking the Huss I obviously had a few pictures taken (!!) and was able to study the detail of this magnificent fish. When looking at the Huss, it looks like a really big Dogfish, in fact one of its other names is 'Greater Spotted Dogfish'. Like one of my other favourite fish, the smoothhound, it is also a member of the shark family, but a Huss has visible teeth. After I returned the Huss in the shallow water, I gave it chance to revive and watched how smooth it glided into deeper water.

My mates were hopeful that another Bull Huss would appear and tried the best they could in the time we had left, but unfortunately, we had no more bites. The wind and rain picked up and we all decided to call it a day. Although not everyone was successful, it was great that we all managed to see this fantastic specie which we don't tend to find in Kent. We all had a great time on our road trip to North Wales. It was a long journey back home, but we all agreed that it was well worth it!



**Salty  
Hooks  
Fishing  
UK**

*Tight lines, Richard Smith*





# Mousehole Lakes

NINE ACRES - THREE LAKES

**BAILIFF ASSISTANCE AVAILABLE**  
FOR UNLOADING YOUR EQUIPMENT  
TO YOUR SWIM



Kestrel Lake



Kingfisher Lake



Kingfisher Lake



Kestrel Lake



Swift Lake



## KESTREL LAKE up to 3 Rods

Day Ticket : £25	60 hours : £85
24 hours : £40	72 hours : £100
36 hours : £55	84 hours : £115
48 hours : £70	96 hours : £130
5 days : £145	6 days : £160
7 days : £175	
Exclusive Hire up to 6 anglers for 48 hours : £450	

## KINGFISHER LAKE up to 3 Rods

Day Ticket : £20	60 hours : £80
24 hours : £35	72 hours : £95
36 hours : £50	84 hours : £110
48 hours : £65	96 hours : £125
5 days : £140	6 days : £155
7 days : £170	
Exclusive Hire up to 15 anglers for 48 hours : £1,000	

## SWIFT LAKE (Match/Pleasure) up to 2 Rods

Day Ticket : £10

### Mousehole Bait & Tackle

is open 7 days a week for all your needs. Contact Joanne on **07725 783405** for any bait and tackle enquiries.



**TOILET & SHOWER BLOCK WITH DISABLED FACILITIES**

FREE shower for overnight & 48hr plus sessions

Maidstone Road | Nettlestead | Maidstone | Kent | ME18 5HR

**07725 783405**

[www.mouseholelakes.co.uk](http://www.mouseholelakes.co.uk)





THE THIRD WAY

GRIPZ

NOTHING GRIPS  
LIKE GRIPZ

**GRIPZ HOOKS** are the advanced alternative  
to barbed and barbless hooks.

The micro grooves give exceptional grip, ensuring better hook holds, and the ultra sharp cutting point promotes smooth penetration time and time again, without the need for additional sharpening.

> IT'S THE THIRD WAY <



Pallatrax Angling International Ltd

Higher Ashmansworthy - Woolsery - Bideford - Devon - EX39 5RE

01409 240042 · [info@pallatrax.co.uk](mailto:info@pallatrax.co.uk) · [www.pallatrax.co.uk](http://www.pallatrax.co.uk)



[pallatrax/](https://www.facebook.com/pallatrax/)



[@pallatrax](https://www.instagram.com/pallatrax)



[Catch More  
Fish TV](https://www.youtube.com/CatchMoreFishTV)