

FRESHWATER INFORMER

Issue 346 - June 2026



**Free
Magazine**

**Lee Randall
Cottingham Lakes
49lb 14oz
Lake Pepper**



Catch Up With:

Medway Man
The Friendly Fisherman
In The Edge With Alex



Whether you are an experienced angler or just starting out, we have everything you need to 'Catch the impossible'



Check Out our New Website

0203 5189611

www.rmtackle.co.uk



88-40 Avenue Road, Bexley Heath, Kent DA74EG



ORCHARD PLACE FARM FISHING

13 FISHING LAKES in the KENT COUNTRYSIDE
Pearsons Green Road, Paddock Wood, Kent TN12 6NY



Carp to 49lb+

01892 838576 or 07860 608218



Catfish to 112lb+

At Orchard Place Farm you can surround yourself in the natural beauty of the Kent countryside, located just outside of the picturesque town of Paddock Wood, and only 8 miles from Maidstone. The fishery boasts 13 lakes - 10 carp and catfish lakes and 3 match/pleasure lakes.

SPECIMEN LAKES

DAY TICKETS
AVAILABLE
24HR - £30
48HR - £55
(additional charge
for 3rd rod)

FULLY FUNCTIONING LAKE 13 - CARP & CATFISH WATER

Many swims have disabled access • All-weather pathways leading all around the lakes and up to each individual swim • Purpose-built toilets located in the main car park (with hot shower) • Between Lake 3 and Lake 4 (toilet and sink block only) • Block constructed by Lake 7 also contains a microwave, fridge and washing up facilities.

MATCH/ PLEASURE LAKES

DAY TICKETS
2 RODS - £10
CONCESSIONS
1 ROD - £8

FOOD IS AVAILABLE ON SITE FROM MID-MARCH TO OCTOBER

www.orchardplacefarmfishing.co.uk

Tackle/bait/shop situated in the main car park, stocking all top bait brands including worms maggots etc. Everything you need at VERY competitive prices.



NEW TO ORCHARD PLACE FARM! HORSMONDEN FISHING LAKES

Two beautiful lakes set in mature, peaceful Kent countryside in an Area of Outstanding Natural Beauty (AONB)

Carp
to 38lbs

Top Lake
Catfish to 85lbs

Bottom Lake
Catfish to 75lbs

Top Lake has five swims, Bottom Lake has six and both can be fished on a day ticket or lake exclusive booking

Anglers' mess on site with fresh running water, wash basin and toilet

Horsmonden Fishing Lakes, Grovehurst Road, Horsmonden TN12 8BQ
All enquiries and bookings to Orchard Place Farm Fishery on 01892 838576

Welcome to the June 2026! edition of The Freshwater Informer

This month, following our trip to Bodle Angling, we had a fantastic time at their open day where we spoke to so many of our regular readers, as well as plenty of new faces discovering The Freshwater Informer for the first time. Carl had a queue stretching for miles and, as always, he gave every single one of you his time and attention – something that never goes unnoticed.

I have also been over to Pitland's (Page 43) and spent some time enjoying the facilities there, including managing a full roast dinner in between bites! I have written all about the visit in this month's Fishery Focus on Pages 24 & 25. I have a week off coming up in early June, so I'm hoping to get out on the bank myself for a bit of relaxation and a few fish. I'm planning at least two 24-hour sessions, although I still haven't decided where to head just yet.

As always, Alex returns with On The Edge, where he has been experimenting with a new float setup inspired by some underwater footage he captured while Crucian fishing. Andy Lush has been trying something a little different with a Wrasse fishing trip, which you can read about on Pages 28 & 29. Bob, as always, has been out on the bank float fishing for Tench, along with a few other species mixed in along the way.

Over the last couple of weeks, I've noticed several fisheries seeing fish spawning as the weather starts to warm up. If you're on the bank and witness spawning activity, it's always worth packing away and letting the fish get on with it. In my opinion, they're rarely interested in feeding during this period anyway – and there will always be another day to fish.



As always, a massive thank you to each and every one of you who reads, shares, and supports The Freshwater Informer. Your support means everything and helps the magazine continue to grow every single month. Tight lines, and enjoy the June edition!

I'm working hard behind the scenes to continue growing the magazine and to bring you even more great content as we move through 2026. If you've got a venue you think we should visit, or a story you'd like to share, please don't hesitate to get in touch. Until next time—tight lines, and make the most of every second on the bank.

Have a great Month tight lines to you all

Content

- 4 Fishery Reports - A round up of all the latest goings on at the regions fisheries
- 6 In The Edge With Alex Coutts
- 18 Readers Catches - including the winners of this month's [Urban Baits](#) competition
- 22 Team Freshwater Informer
- 25 Trout Informer
- 26 The Friendly Fisherman - Andy Lush
- 28 Junior Informer - The next generation of Anglers share their catches
- 36 Medway Man Bob Morris
- 40 Directory - Find you local Fishery, Tackle shop and Clubs



The Freshwater Informer
email: info@freshwaterinformer.com

COPY DEADLINE for July 2026 Magazine
Friday 26th June 2026 at 5pm

The Freshwater Informer cannot accept responsibility for the quality of goods or services advertised in this publication. All views expressed are those of the contributors concerned. All images received are accepted as being true and accurate and as described.

Tricklebrook Fishery



Graham - Tricklebrook - Old Lake - 18lb



Tricklebrook New Lake



Graham Beale - Tricklebrook - Old Lake - 17lb 12oz



Tricklebrook Match Lake



Tricklebrook - Match Lake



CF Carp fishing - 29lb Common



Jamie - Specimen Lake - 34lb 7oz Common



William - Quarry - 34lb Cat PB



George - Dove 18lb Common Carp



NG Jordan specimen 39lb mirror



Nicky's Group - Main Lake



Rob - Specimen Lake - Common

Hawkhurst Fish Farm

Hastings Road, Hawkhurst, Kent, TN18 4RT

2026 Match Lake bookings

We are still taking bookings for exclusive hire of our 20 peg match lake. It is very well stocked with carp from just ounces to over 12lb!



Exclusive hire: £175



or

£10 per match angler (for 10+ anglers)



T: 01580 854702

E: info@hawkhurstfishfarm.co.uk

www.hawkhurstfishfarm.co.uk

PRICES

- DAY TICKET X2 RODS - £15
- DAY TICKET X3 RODS - £20
- 24 HOUR TICKET X2 RODS - £30
- 24 HOUR TICKET X3 RODS - £35
- 36 HOUR TICKET X2 / X3 RODS - £45 / £55
- 48 HOUR TICKET X2 / X3 RODS - £60 / £70



**Book now on
Swimbooker**



TRICKLEBROOK FISHERY

This fantastic coarse fishery consists of two very well stocked lakes.

A 4 acre specimen lake stocked with big Catfish up to 50lbs, huge Carp up to 40lbs, big Perch up to 6lbs and beautiful Roach over 3lbs. And a 1 acre match fishing lake teaming with a variety of species weighing up to 28lbs.



find us on facebook and instagram
FACEBOOK.COM/TRICKLEBROOKFISHERY



Open from 7am 365 days a year!

A UK CARP TOP 100 FISHERY - BOOK NOW!

tricklebrookfishery.co.uk

TEL 07743 955812 | 01892 835453 | EMAIL info@tricklebrookfishery.co.uk

Tricklebrook Fishery | Colts Hill | Five Oak Green | TN12 6SH

Telephone bookings are to be paid in advance and are non-refundable • Credit and Debit cards now accepted

LAKE RULES

1. A TICKET MUST BE PURCHASED BEFORE FISHING
2. ALL NETS, UNHOOKING MATS AND WEIGH SLINGS MUST BE DRY BEFORE DIPPING IN THE DISINFECTANT BATHS
3. NO NUTS OR PARTICLE
4. BOILIE AND PELLET ONLY FOR SPECIMEN AND BACK LAKE - ALL BAIT WILL BE INSPECTED
5. ALL FISH MUST BE RETURNED TO THE WATER AS QUICKLY AS POSSIBLE FOLLOWING CAPTURE. NO STANDING. FISH MUST BE HELD LOW OVER A MAT/CRADLE FOR PHOTOGRAPHS
6. MINIMUM 15LB LINE AND NO BRAIDED MAIN LINE
7. NO SACKING OR RETAINING OF FISH IS PERMITTED. THE REMOVAL OF FISH FROM THIS VENUE WILL BE VIEWED AS A CRIMINAL ACT
8. EACH ANGLER MUST HAVE A MINIMUM OF 42 INCH LANDING NET AND A LARGE PADDED UNHOOKING MAT/CRADLE REGARDLESS OF TARGET SPECIES ON SPECIMEN AND BACK LAKE
9. BARBLESS HOOKS ONLY
10. NO LEAD CORE, NO FUSED LEADERS OF ANY KIND INCLUDING SAFEZONE
11. NO FIXED LEAD RIGS. ALL LEADS MUST PASS FREELY OVER LEADER KNOTS. RIG CHECKS WILL BE CARRIED OUT
12. RECREATIONAL DRUGS WILL NOT BE TOLERATED - IMMEDIATE BAN FOLLOWS
13. PLEASE INFORM FISHERY MANAGEMENT OF ANY SNAGGED TACKLE OR FISH
14. ANY FISH OVER 28LB MUST BE REPORTED TO BAILIFF
15. NO DOGS ALLOWED
16. BARBECUES ALLOWED IF OFF THE GROUND
17. NO BAIT BOATS
18. FAILURE TO COMPLY WITH ANY OF THE RULES WILL RESULT IN BEING ASKED TO LEAVE AND/OR BANS WHERE APPROPRIATE AND NO REFUND WILL BE OFFERED
19. TRICKLEBROOK IS NOW OPERATING A ZERO-TOLERANCE POLICY TO ANY ACTS OF AGGRESSION OR ABUSE TOWARDS ITS BAILIFFS AND STAFF
20. ALL RUBBISH TO BE TAKEN HOME

**CCTV IN OPERATION
OVER WHOLE SITE**

OPENING TIMES
SUMMER 7AM - 7PM WINTER 7AM TO DUSK



In The Edge With Alex

NOT The Shot On The Hook Rig

Few of our native species are as endearing, or frustrating, as the crucian carp. Once common place throughout our lakes and ponds this enigmatic species has been in decline over recent decades, partly through habitat loss and partly through its propensity to breed with other cyprinids, such as carp and goldfish. Thankfully, due to the efforts of individuals, conservation groups, and clubs, these plucky little fish are once again starting to make their presence felt.

However, just because they are easier to find, it doesn't follow that they are any easier to catch. They have stayed true to their well-deserved reputation as been incredibly finicky feeders, capable of driving the most dedicated anglers to despair.

My own relationship with crucians dates back to the very beginning of my angling journey. At first with fish of no more than a few ounces, and by my mid-teens, in the form of my first proper specimens of any species, with a brace of two pounders. Over the years I have occasionally added to this tally working my way up to my current pb of 3lb 3oz.



The one thing that all of these bigger fish have had in common is that they have been remnants

of declining populations. Chance encounters, echoes of the past, slowly fading into the mists of time.

Fortunately, last season I became a member of a club with a dedicated crucian venue. I was keen to get reacquainted with these wonderful fish, and set out to catch them on the tried and trusted method of lift float fishing. Crucian carp bites are notoriously fickle. The float will momentarily stir, dip, lift, settle, frequently come to nothing, or occasionally produce a hittable bite that may, or may not, result in a fish splashing its way to the net.

I caught a few, not many, but enough to think that I was on the right track. In my mind's eye I was getting one or two chances from any passing group of fish. All of that changed when I spent a couple of hours filming underwater. As some might be aware, I have a small YouTube channel and occasionally include underwater footage in my videos. The way that I achieve this is by attaching an action camera to a landing net pole and submerging it in an adjacent swim whilst I'm fishing, downloading the footage when I get home. What I saw from the crucian pond left me dumbfounded. Far from being just the occasional fish, the bottom was carpeted with shoals of them. I was getting things very, very wrong. What stood out most was the way that they fed. Standing on their noses, almost bouncing their way across the lakebed. No wonder bites hardly register. I needed to come up with a plan. I'm well aware that using a method feeder has become commonplace in recent years when fishing for specimen crucian, and can certainly understand why, but it doesn't really fit the ethos of my angling. At the same time, I couldn't see much point in continuing with an approach as ineffective as the one that I was using. What I needed was a more efficient rig, that still included a float, so as to be aesthetically pleasing to my style of fishing. From what I could see, the big failing of the traditional lift float approach is that even if the fish pick up the bait, they don't come further enough off of the bottom to displace the shot, resulting in lots of knocks and twitches at the float end, with very few proper lifts. What I needed to develop was a way where

the slightest movement of the bait was transmitted to the surface.

The Not The Shot On The Hook Rig

The principal of the lift float rig is sound, but in this situation, the application was not.

Over the winter months it struck me that by changing the order of the component parts, I could create a more linear, and hopefully more effective, version to get the better of these tricky fish.

My starting point was to tie up a hooklink using a size 14 Drennan super specialist barbless hook, but use a knotless knot to create a hair. This was attached loop to loop to my mainline. I experimented with a number of different floats but eventually settled on a Korum classic loaded body waggler with a 2g loading.

The reason for this is that, when held in place by float stops, the float will cock to just below the sight tip without any additional shot.

It is vitally important to plumb the depth of the swim

accurately, with the float set so that the white band below the sight tip is just submerged. Having removed the plummet, you can then add a shot to the hair. Just enough to dip the float down to the base of the orange sight tip. Too light, and it will get displaced by small roach, or



fish moving through the swim. Too heavy, and the crucians may be less inclined to pick up the bait. So far, at the depth and distance at which I have tested it, a no1 shot seems about right.

Bites are small, but positive. As soon as the white ring appears above the water you can be sure that a fish has picked up the bait, and you should strike.

Although it is very much in the formative stages, so far results have been very positive. My 'bite to fish on the bank' conversion rate has been much improved, landing more, and bigger fish, than average. Also, it is easier to ignore the pesterings of small roach as they tend to drag the tip down, finding it more difficult to lift the shot, only striking when the float lifts. You would be forgiven for thinking that the fish would shy away from the tight line between float and hook, but due to the angle, and generally weedy areas, that crucian feed, this doesn't appear to be the case. I've even landed some good sized skimmers (which I mistook for giant crucians in the early morning light...) on this approach. Tench seem to be less inclined to pick up the bait, but this could be a good thing as an angry tench, on light tackle, near lily pads, rarely ends well.

As with any new approach, every answer asks new questions. Would a pole float be better? What is the optimal length of hair or weight? Will it catch specimen sized crucian? And probably most importantly, is this genius, or just complete balderdash?

Only you, the reader, can answer that.

Alex



PINIONS

FISHING BAITS

Open 7 days a week
 Monday - Saturday 9am until 5pm
 Sunday 10am until 4pm

DELIVERY
SERVICE
AVAILABLE

01622 718580

431 London Road, Ditton, Aylesford **ME20 6DB**
 (Only 5 minutes from M20 Junction 5) Ample free parking






WhatsApp us on
07808 645806

Check out our Instagram page
#pinionfishingbaits

www.pinionsfishingbaits.co.uk

Rodmill Carp Syndicate

10 Acre Lake Situated on 80 Acres of Farmland
150 plus fish to over 30lb
15 swims, vehicle access to all swims (Summer Months)
Night Fishing
Limited Spaces Available

For More Information Please Contact
 Scott 07766013492



ELPHICKS FISHERIES

DESIGNED AND BUILT WITH THE MODERN ANGLER IN MIND

Elphicks Fisheries has been designed and built with the modern angler in mind. With 7 lakes available for day ticket and session fishing, there is something to suit anglers of all abilities and styles. Each lake benefits from its own parking area within easy reach of the swims, making access simple and convenient. All swims are built for all-weather use to provide comfortable and practical fishing areas throughout the year. For further information on the lakes, facilities, rules, or bookings, please contact the fishery directly through Elphicks Fisheries.



Elphicks Fisheries Spelmonden Road
 Horsmonden, Kent TN12 8EL
 Tel: 01580 212512
 email: info@elphicks-fisheries.co.uk



www.elphicks-fisheries.co.uk



Adam Beaven 37.12
Plantation lake



Brian Osgood 22lb
Plantation Lake



Darren Belton 44.8 Pullens
lake



Mrs Beaven 30.3
Plantation lake



Ryan Flynn 20.2 Kettles lake



Michael Lait 34.12 Prairie
Lake

FISH ON TACKLE SHOP

15 MINUTES
FROM THE M20
10 MINUTES
FROM THE A21

www.fishontackle.co.uk

OPEN MON - SAT 8:30am - 5:30pm



SOUTH EAST BIGGEST TACKLE SHOP!

- CARP SPECIALISTS
- BIVVY & BEDCHAIR SHOWROOM
- IN HOUSE COOKED PARTICLE
- PREDATOR SPECIALIST
- BIGGEST RANGE OF LURES IN THE SOUTH EAST
- LURE DEMO TANK
- TWO FLOORS OF ALL THE LEADING BRANDS
- MATCH FISHING SPECIALISTS
- THE BEST, FRESHEST MAGGOT, PINKIE & SOUATT
- FRESH IN HOUSE TURNED CASTER
- REDS, DENDROBEANA & LOBS. TUBS- 1KG SACKS
- BIGGEST RANGE OF CLOTHING - KIDS TO 4XL
- PLENTY OF FREE PARKING
- FRIENDLY EXPERT ADVICE

f @ FISHON TACKLE SHOP

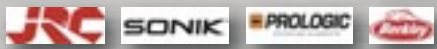
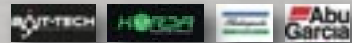
WWW.FISHONTACKLE.CO.UK 01892 459217 SALES@FISHONTACKLE.CO.UK

FORSTAL BUSINESS PARK - MAIDSTONE ROAD - PADDOCK WOOD - KENT - TN12 6PY





Located in the heart of New Romney, Romney Angling is a friendly, local, family run fishing supplies shop that was founded in 2021. We pride ourselves on the hundreds of items we provide to fishing lovers around the country. Whether you're a novice or an expert, Romney Angling will have the fishing products you need, and our friendly staff are armed with knowledge to provide any advice or answer queries you may have.

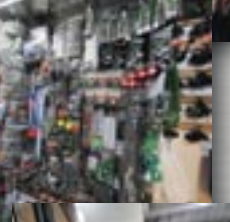


59 High St, New Romney TN28 8AH

01797 362889



Info@romneyangling.co.uk



www.gillhamsfishingresorts.com

Horam Manor Fishery

10 secluded lakes in the Sussex countryside

Mixed coarse fishery with carp to mid 20s
Perfect for families and experienced anglers

Day ticket fishing - Dawn to Dusk - Only £5 per rod!



24 hour fishing
by prior arrangement
Non-members £25
Members £10

Annual Day Ticket membership 1 rod - £100 / 2 rods - £150

Horam Manor Farm, Horam TN21 0JB

01323 840889 / 07707 759364



www.horammanorfishery.com

5 lakes and
1.25 miles
of the
River Eden

**GABRIELS
FISHERY**

Toilets and
shower facilities

Advanced booking
available
Day & night
session fishing

Camping &
Caravanning facilities



SWALLOW LAKE
& HARE LAKE
great for beginners



Specimen Lake
ADMIRAL
LAKE fish to
41lbs



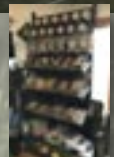
OAK LAKE
carp to 30lbs



SILVER
Match Lake



Well stocked bait & tackle shop
open from 7am every day.



Maggots and Worms
Are sold in the tackle shop

Gabriels Fishery | Marsh Green Road | Edenbridge TN8 5PP

Bait and Tackle Shop: 01732 865355

Email: info@gabriels-fishery.co.uk

www.gabriels-fishery.co.uk





GREENACRES FARM FISHERY



Sissinghurst Road | Biddenden | Kent | TN27 8EH

Located on the Weald of Kent in Biddenden we offer syndicate quality lakes for all. There is one specimen lake for carp up to 30lbs+ and perch to 5lbs, one specimen predator lake for carp to 30lbs+, catfish to 60lbs+ and pike to 15lbs, one match lake with 22 purpose-built swims, one coarse lake and finally a tench/family pond. Facilities include a club house with toilets, shower and wet room.

This beautiful setting needs to be visited and enjoyed!

Prices start at £10 per session on the coarse lakes. For the specimen lakes prices start at £20 for the day rising to £30 for a 24hrs ticket (up to 3 rods). Lessons now available for all ages. Gates open at 7am and close at 6.30pm (Winter hours 7am to 5pm)

SENIOR DAY TICKETS ON OUR COARSE LAKES HERON AND BLUEBELL ARE AVAILABLE FOR £8 MONDAY TO WEDNESDAY

To book, please call or text us on **07933 934942**
or visit our website **www.greenacresfarmfishery.co.uk**

Email : greenacresfarmfishery@gmail.com





Best Buddies
Pet and Fishing Supplies

STICKY

DRENNAN **01303 487144** **KORDA**

Fresh & Frozen Bait including Lug, Rag, Squid, Crab, Bluey, Mackerel & more...

Maggots, Casters & Worms ALL YEAR ROUND!
Boilies, Liquids, Particles, Groundbait, Method Mixes & Pellets.
Rod & Reels, Nets, PVA, Hooks, Line, Weights, Tools & Accessories.







248 Horn Street,
Folkestone, Kent,
CT19 4JR




Terry Holt - Elphicks 15lb 3oz



Dan Bates - Hartley Lands -
Pear Tree 30lb + Mirror



Mathew Colegate - PB Tench
6lb 10oz - Hartley Lands



Josh Binks and his family visited Shirkoak in a Pod over the weekend. Had a great session kids and wife thoroughly enjoyed it. Dad and the boys were kept busy landing 22 fish with the biggest going 30lbs 6ozs and back up fish of 29lbs along with other doubles and 20s, and a fabulous tench! Well done lad happy Angling!

Trevor Ford Memorial Match

R&M Tackle at Elphicks Kettles Lake

Raising money for Cancer Research UK





James Ridley - Penny Bridge - 1lb 8oz Perch - Prawn



Suzanne - Shirkoak Fishery - 2lb 2oz Perch



John Smith - Mushroom Farm - 44lb 2oz Cat Fish Main Lake



Paul Jackman - 46lb 8oz Wintons fishery Catfish



Paul Jackman - 22lb Wintons fishery Catfish



Liam Enderby - River Trent - 3lb 2oz Perch

Iden Wood Fishery



Tel/Fax: Andy Ashdown
01797 280180
Mobile:
07906 232225

5 secluded lakes set in 60 acres of woodland, containing Carp to 30lbs, Tench to 5lbs, Bream to 9lb plus Roach, Rudd and Chub

Vehicle access/night fishing allowed / match bookings taken

Spring Lodge | Iden Wood Fishery
| Coldharbour Lane | Iden | Rye |
East Sussex | TN31 7UT

More House Farm Fishery



catch

catch

In order to fish any of our specimen lakes you must become a member first. To do this simply continue with your catch booking then upon arrival of the venue we will sort out your membership and issue you a membership card. We have been asked to add multiple tiered memberships by you amazing anglers so that's just what we've done!

More House Farm is a rapidly expanding fishery set in the beautiful Mid Sussex countryside. It currently boasts five lakes. They are all set in very tranquil surroundings, bordered almost entirely by open countryside.

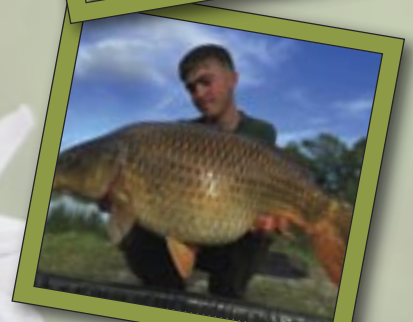
We also have Two new Specimen carp lakes called Oaks and Dogwood that were built June 2020 and opened October 2021. Oaks has 5 pegs on it with carp ranging from 15lb – 33lb.

Dogwood has 11 pegs on it separated by islands we have 18 tench and carp ranging from 8lb – 32 lb and already the lakes are showing great promise and as soon as the Pictures come in I will make a new section on the website for them.

The fishery is located at More House Farm
Lunce's Hill, Wivelsfield RH17 7RE

For a map and further directions to find More House Farm please go to our contact page.

www.mhff.co.uk





14 miles of River and 7 Lakes containing:

Carp to 52lbs 4ozs, Tench to 12lbs 8ozs, Bream to 19lbs+,
Barbel to 15lbs 2ozs, Chub to 5lbs+, Perch to 3lbs 6ozs,
Pike to 31lbs 6ozs, Crucians to 4lbs 6ozs and
Grass Carp to 29lbs 6ozs.

Also large Roach and Rudd to 3lbs and large eels.

WE HAVE NOW JOINED CLUBMATE

View the waters on the web

www.tonbridge-angling.co.uk

or

<https://tdafps.clubmate.co.uk/register>

NEW Gold Membership £225 + £10 Joining Fee

NEW Silver Membership £85 + £10 Joining Fee

NEW Bronze Membership

OAP 66+/Student 16-18/Disabled
(Proof Needed) £45 + £10 Joining Fee

For all enquiries please email:

info@tonbridge-angling.co.uk



Welcoming anglers since...1948

Join us now for the 2026-27 season and get the remainder of the 2025-26 season for free!

Your membership will be valid from the date of purchase until March 31st 2027, giving you 15 months for the price of twelve.

Contact us:-

Telephone: 07873 322562

Email: email@crowboroughanglers.org.uk

www.crowboroughanglers.org.uk



A Passing of the Baton moment for Thiea having just won the CDAA Junior Match Cup Thiea met a well know previous winner Alex from Fish with Carl



SHCAC

Southdown & Hydneye Community Angling Club

Established club based in Eastbourne & surrounding area

Our Waters:

- Wallers Haven - Specimen Pike & Carp & mixed course fishery
- Pevensey Haven - Specimen Pike & mixed course fishery
- Hydneye Lake - Prolific Tench & mixed course fishery.
- Cuckmere Haven - Intimate river containing Chub & various species
- Hailsham Country Park/Lakeside - several 20lb plus carp up to 31lb
- Marle Green - Secluded lake containing small carp & various species

Wylands Fishery - Exclusive arrangement for SHCAC members on 4 lakes - Discounted day tickets at £9 (usually £17.50)
Mon to Fri on House, Field & Old Speci lakes, 7 days a week on Snake lake

Apply for membership online via website: www.hydneyecac.co.uk

Facebook: "Southdown & Hydneye Community Angling Club"

www.hydneyecac.co.uk

Enquiries: southdownandhydneye@gmail.com





MFC OUTDOOR STORES

EST. 1981

Here at MFC Outdoor Stores we have a huge range of fishing supplies. From Fox and Korda to Drennan and Gardner to Guru and Nytro, Preston and Sonubaits to Dynamite and Sticky plus many more, including maggots, worms and freezer baits. Also New range from Skeeter. We also have a large range of Air Rifles and Workwear, Waterproofs, STC Boots, Hiking Boots and Wellies



www.mfcoutdoorstores.com

Phone: 01323 846883 Email: info@mfcoutdoorstores.co.uk

9 Station Road, Hailsham, East Sussex, BN27 2BE

Free parking in 100+ space carpark opposite the shop.



URBAN

Fish of the Month Prize Winner



Brody Simpson - 35lb 8oz Mirror



Brandon Taylor 27lb Beavers Majors Lake



Mark Day - Sandwich Lakes 16lb Grass Carp



Hayden Ball - Blasford Hill - 29lb Mirror



James Flashman - Cottington Lakes - 24lb 8oz Mirror



John Appleton 31lb Mirror - Cackle Hill



John Appleton 31lb Mirror - Cackle Hill



Ronnie Platt - Cackle Hill - 26lb6oz



Steve Bates - Hartley Lands 24lb 7oz Mirror



Steve Bates - Hartley Lands 29lb 8oz Common

**FRESHWATER
INFORMER**

This competition is open to all species. To be in with a chance of winning, send your catches to: info@freshwaterinformer.com or our Facebook Page, Winners will receive a:

Freshwater Informer / Urban Baits Session
Pack 2kg of Boilies 1kg Stick Mix, 500ml Liquid and Hook Baits to match in either their *Nutcracker, Red Spicy Fish, Tuna & Garlic, Strawberry or Fully Loaded Range*

👏 Winner's Spotlight 👏 A huge congratulations to Brody Simpson on landing a stunning 35lb 8oz Mirror from Pride Of Derby — our Urban Bait Prize Winner!

Your continued support is what makes these giveaways possible! Stay tuned for next month's prize – you won't want to miss it!



Ben White - Pittlands Lakes - 24lb Mirror



Carter Williams - Loggies lake - 32lb 2oz mirror carp



Absolute Tackle

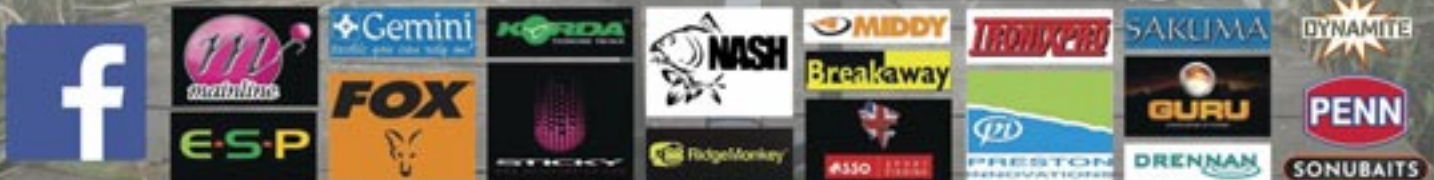


www.absolutetackle.co.uk

All the top brands for the coarse, carp, predator and sea angler

Quality fresh and frozen baits always in stock

We stock the best range of leads for the sea angler in the South East!



01227 636724 / 07809 330854

Plenty of FREE parking right outside the door

Monday to Saturday 9am - 5pm / Sunday 9am -1pm

12 Wealden Forest Park, Herne Common CT6 7LQ

Between Canterbury & Herne Bay on A291 - just 10 minutes from either!

Email: badders22000@hotmail.com

BAIT AVAILABILITY DEPENDENT ON TIDE AND WEATHER CONDITIONS

HOUSE LAKE SPOTLIGHT



One water that consistently draws attention is the ever-popular House Lake. Known for its picturesque setting and reliable sport, House Lake has become a firm favourite among pleasure anglers and carp enthusiasts looking for both action and quality fish.

Positioned in the heart of the complex with ample parking, toilets and the cafe within close proximity, House Lake offers a peaceful and accessible fishing experience while still producing some excellent catches throughout the year. The lake is well stocked with hard-fighting carp alongside a healthy head of silverfish, making it an ideal venue for anglers who enjoy

varied sport and regular action. As temperatures have risen into late spring and early summer, anglers have reported increasingly consistent catches, particularly during the warmer evenings and early morning sessions.

Method feeder tactics have been proving especially effective in recent weeks, with pellet and corn hookbaits accounting for some impressive carp catches. Margin fishing has also started to produce well as fish move confidently into the shallower water during the warmer parts of the day. Pole anglers targeting silvers have enjoyed steady sport too, with skimmers and roach providing plenty of bites and helping to keep nets building throughout longer session.

One of House Lake's biggest attractions is its versatility. Whether you are an experienced angler targeting larger carp or a newcomer simply looking for a relaxing day's fishing, the lake caters for a wide range of abilities. The comfortable pegs and easy access around the water make it particularly appealing to families and junior anglers, while more experienced visitors appreciate the opportunity to fine-tune tactics and build consistent catches.

The surrounding scenery only adds to the appeal. Set within the well-maintained grounds of Wylands Farm, House Lake provides a calm and enjoyable atmosphere that encourages anglers to settle in for a full day on the bank. Combined with clean facilities, ample parking, cafe and the friendly on-site team, it's easy to understand why many visitors return week after week.

As the summer season progresses, expectations are high for even stronger sport on House Lake. With fish feeding confidently and conditions continuing to improve, the lake looks set to remain one of Wylands Farm's standout waters over the coming months. Whether you're after a productive pleasure session, quality carp action, or simply a relaxing day outdoors, House Lake continues to deliver the goods.

Wylands Farm Fishery Team



FISHING LAKES IN DORSET & EAST SUSSEX

WYLANDS FARM 📍 BATTLE, EAST SUSSEX

9 WELL STOCKED LAKES
VARYING IN DIFFICULTY



FISHING HOLIDAYS
IN OUR ONSITE ACCOMMODATION



ONSITE CAFE AND TACKLE SHOP



Scan the QR to explore our lakes at Wylands Farm

LYONS GATE

📍 CERNE ABBAS, DORSET

4 WELL STOCKED LAKES
VARYING IN DIFFICULTY



ONSITE SHOP



Scan the QR to explore our lakes at Lyons Gate

SHARNFOLD FARM

📍 EASTBOURNE, EAST SUSSEX

1 WELL STOCKED LAKE
MEDIUM DIFFICULTY



Scan the QR to explore our lake at Sharnfold Farm



TEAM FRESHWATER INFORMER

PITLANDS FISHERY - AFTERNOON RELAXING

This month has been a busy one behind the scenes with work commitments taking up most of my time, which unfortunately meant I only managed a single fishing trip. That trip, however, took me over to Pittland's Fishery for a day session and it was certainly a venue that left a good impression on me despite the fishing proving difficult.

Pittland's is a members' fishery, but day tickets are also available, making it accessible for anglers wanting to sample what the lakes have to offer. It is far more than just a fishery too, with the site becoming a very popular destination for families and visitors looking for a relaxing day out. There is a campsite area where you can pitch up for a weekend away, along with a licensed bar and restaurant on site. I'm told the Sunday roast dinners are well worth trying and after my visit I can certainly see why many people make a day of it even when the fishing is slow.

The lakes themselves are all set close to the main facilities, meaning you are never too far away from your swim, a hot drink or even a pint if you fancy one later in the day. I chose to set up on Lake B, the specimen lake, which holds some impressive carp along with catfish. With it being my first visit, I went in fairly blind without much knowledge of the lake or the tactics that work best there.

The morning started bitterly cold and straight away I had a feeling it could prove to be a challenging session. We have recently been hit with cold mornings and persistent north-easterly winds,

conditions that can make fishing extremely difficult at the best of times. Added to that, some lakes are now seeing spawning activity begin, so the odds were already stacked against the anglers. I positioned myself on a peg to the rear of the island and set out two rods. One was placed just off the island while the second was fished tight to the margin on my own bank. Although nearby Lake C appeared to be producing a few fish with rods regularly bending around, Lake B seemed to completely switch off during my session. In fact, nobody around me looked to be catching and it quickly became clear it was going to be one of those days.

Rather than let it spoil the trip, I decided to settle in, enjoy the surroundings and head over for a roast dinner and a well-earned relax. The food was excellent and the atmosphere around the complex made it easy to see why Pittlands has become such a popular venue with both anglers and families alike.

While the fish may not have played ball on this occasion, it certainly won't stop me returning. Since my visit I have seen plenty of photographs coming through from anglers who have enjoyed some fantastic captures from the lakes, proving just what the venue is capable of when conditions are right. I will definitely be heading back to Pittlands Fishery again soon once the weather settles down a little and hopefully next time I'll have a few fish pictures of my own to share!





Scan for Website
and more details



Pittlands Lakes Angling Club
Churn Lane
Horsmonden
TN12 8HL

PITTLANDS LAKES

07716 065900

At Pittlands Lakes we provide Day and Night Tickets to ALL
The onsite Bar and Restaurant is open during the season for a
variety of hot and cold refreshments including breakfast and
lunches, all at reasonable prices. Winter and Summer times
vary please check with us.

**CARAVAN CLUB SITE THAT OFFERS MEMBERS
CARAVAN AND MOTORHOME FACILITIES**

*Even if you're not fishing please come and sample our
Sunday roasts and enjoy the beautiful lakeside views*



Our toilets are brick-built and open
throughout the season, including disabled
toilet and shower room.

Night fishing is very popular and is available
every night of the week, with just 24hrs notice
to secure a place, please call 07716 065900.



We have designated kids fishing with their own
lake complete with pole hire, nets and bait for
all children under 16 who must be
accompanied by an adult.



There are 3 other lakes for the more experienced
angler with Catfish to 100lbs, Carp to 32lbs+,
Bream, Roach, Tench, Crucian and Perch.

**Night fishing booking from £30 per
night and Day sessions from £10.
Maximum 2 rods**





GUIDED FLY & LURE FISHING DAYS WITH ANDY LUSH

FLY FISHING One of Andy's favourite methods is no longer just for trout. In recent years Andy has been successful at catching specimen carp, throughout the summer from local day ticket waters.

CARP: Andy shares his knowledge and experience in this rapidly growing form of fly fishing. He has written two blogs for Fulling Mill specifically detailing the tackle and tactics he uses; follow this link www.fullingmill.co.uk

TROUT: Boat fishing on Bewl Water or Powdermill reservoir, learn how to locate and catch fish on these large intimidating waters, or fish one of the smaller local fisheries. Learn where trout find their food during the changing seasons; understand this and you will 'catch more fish'.

LURE FISHING: A day afloat with Andy, fishing local reservoirs for Pike, Perch or Zander will see you learning how to search these large bodies of water. Fishing from a boat while using different styles of lures, fish finders and drogues is all part of a successful reservoir angler's armoury.

WEBSITE: View available options here: www.thefriendlyfisherman.co.uk
TO BOOK A DAY email: info@thefriendlyfisherman.co.uk with your contact phone number and Andy will call you back and discuss details.



FISH WITH CARL

MUD PIGS Handcrafted Baits

Unit 1, Browns Lane, Uckfield, TN22 1UN (Behind The Hair Studio)

07494 785273
Find us on Facebook

Order online at www.mudpigsbaits.com

BB Boilie Boys

Boilie boys baits

Boilie Boys Baits was founded in late October 2024 and has been run as a family business from the very first day. Since opening our doors, we have grown both as a family and as a business. We specialise in high-quality, handmade carp baits, pellets, and pop-ups using only the finest ingredients. Our mission is to provide anglers with reliable and effective bait solutions.

Check us out on our website Boilieboys.uk and on TikTok Shop!

Contact info
boilieboysbaits@gmail.com
 07385757124

In The Edge With Alex

The Tackle Box

The Tacklebox has been in business since 1983. We stock the best carp and Specialist fishing tackle and equipment available from the industries top brands and we complement that with seeking out products from outside the fishing tackle industry giving you that little surprise of discovering something different in our store.

www.tacklebox.co.uk

REPORT ILLEGAL FISHING

101 For Non-Emergencies
 999 If a crime is taking place
 Or The Environment Agency Incident Number:
0800 807060

Worth Tool Hire

Worth Hiring Better Than Buying!

High Quality tools and plant, for domestic and commercial Projects
 Worth tool hire is ready to help make your project a success. We have a vast range of products available for short or long term

Email: enquiries@worthtoolhire.co.uk
 Phone: 07770888521

TROUT INFORMER



TENTERDEN TROUT WATERS
Coombe Farm, Chennell Park Road
Tenterden, Kent TN30 6XA
We aim to provide an excellent day's sport
in beautiful Wealden Countryside.
 Day Permit £50 = 4 best fish
 Half Day Permit £34 = 2 best fish
 Catch & Release &
 Junior Permits available.
 Regular stocking of top quality
 Rainbows, Browns & Blues to 12lbs
 TACKLE AVAILABLE TO HIRE
 TUITION BY APPOINTMENT
RANKED IN THE TOP 50 OF THE TOP 100 STILLWATER
FISHERIES IN THE BRITISH ISLES
Contact 07880 722868
www.tenterden-trout-waters.co.uk

TENTERDEN TROUT WATERS, CHENNEL PARK ROAD, TENTERDEN, KENT TN30 6XA

Our family owned Fishery is set in picturesque Wealden countryside offering 5 acres of prime stillwater fly fishing for rainbow, brown and blue trout.

Choose from catch/release or catch/keep permits for full day, half day and evening sessions. Relax & kickback in our comfortable Fishery Lodge with a complimentary tea/coffee/soup.

Fly Fishing Tuition - for beginners 1-to-1 or small groups.

Gift Vouchers - Ideal for fishing permits, tuition and Shepherds Hut stays.

Stay with us - Enjoy 20% off fishing permits when booking our heated Shepherd's Hut 10mins from Tenterden and Chapel Down Vineyard.

www.tenterden-trout-waters.co.uk



Lakedown Trout Fishery & Taproom - Check

LAKEDOWN TROUT FISHERY & TAPROOM

Lakedown Trout Fishery is situated in a secluded Wealden valley with scenic views & no visible sign of habitation.

The Fishery was originally designed & created in 1981 by actor & Rock legend Roger Daltrey.

The four spring-fed lakes totalling approximately 20 acres have an abundance of aquatic fly life.

"A visual assault on the senses. There can be no prettier fishery in this land. Spikes of bright yellow flag decorate the banks which are thick with beds of rose bay willow herb, bee-haunted fox gloves & spotted orchid. A place where wild browns & rainbows live side by side"

Lakedown Tap Room is situated on our family farm and trout fishery; Lakedown Trout Fishery, Swife Lane, Burwash, TN21 8UX.

Lakedown Brewing Company is a family run, independently brewery in the heart of rural East Sussex. We brew modern and traditional beers in cask, keg, can and bottle. We are proud to brew the best versions of the beers we love.

There's no need to book, turn up and enjoy what we have on offer!
As the lane is narrow, please drive slowly.

GIFTING OPTIONS

Lakedown BREWING CO.

- Voucher
- Hoodies
- T-shirts
- Guided Lake Walk and Lunch
- Brewery Tour
- Takeaway Beer
- Beer Delivery



01892 826041 / 07951 304515



www.springhilltroutwaters.co.uk



Andy Lush - The Friendly Fisherman

And now for something completely different.....

Wrassin

As you may know, I spent forty-seven years in the tackle trade. In that time, I made lots of friends; many were customers, and some were in the trade. Just over a year ago, I spent a couple of days lure-fishing with a good friend, who is still working in the tackle industry. We nattered about all sorts of things, but mainly about recent fishing trips and about those we were planning. My friend Paul showed me some pictures of the most amazingly pretty fish I'd seen from UK waters. He had caught four stunning ballan wrasse; each had entirely different colours and markings. I instantly wanted to know more about where and how he'd managed to catch these beauties. Paul informed me that he'd been fishing with Danny Parkins, a friend and angling guide we both knew, who lives in Devon, deep in the heart of bass and wrasse fishing country.

I immediately contacted Danny to arrange a trip. Although I'd caught a few ballans while boat fishing off the Sussex coast, they had all been by-catches, as I'd been casting lures for bass. Fishing with Danny was going to be completely different. I imagined I'd be abseiling down cliffs and scrambling over rocks to get into a position to catch some. Because I'm no longer a "spring chicken" I did warn him I wasn't a mountain goat any longer. He reassured me that it wouldn't be necessary to resort to these extremes.

It took longer to organise the trip than I'd envisaged; before I knew it, the summer had passed, and autumn had arrived. With it came unpredictable weather, not ideal when you're traveling from afar. Fast forward to this spring, and dates were arranged. I was so looking forward to this new adventure. The journey went without a hitch, and I arrived in Devon tired but happy. After finding my B&B, I needed to eat and sleep, if I could, because I was so excited about this fishing adventure.

Next morning, Danny arrived carrying a small rucksack that contained all the essential terminal tackle and lures I was going to need. He sorted through my spinning rods briefly before choosing a St. Croix 'Avid Inshore', a 7ft 6in [2.3m] one-

piece model, with a casting weight of 3/8 - 3/4oz [10-21g]. This rod has a sensitive tip action, with plenty of backbone further down into the butt, perfect for bullying wrasse away from their rocky lairs.

We drove further south and west, eventually winding our way down very narrow country lanes. So narrow, in fact, that we had to squeeze into passing points whenever we encountered oncoming traffic. After an hour, we finally arrived at a secluded carp park close to the cliff edge. In the distance, I could just make out the formidable rocky shoreline, what a view. Walking along the coastal path, it wasn't long before we reached our destination. We scrambled down onto the shingle beach before climbing up onto the first of the rock formations.

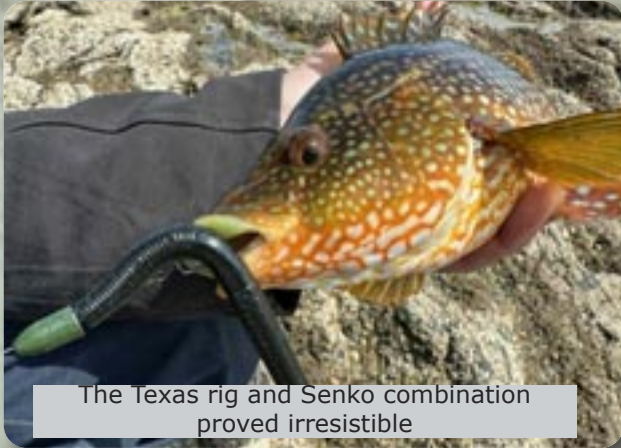
The tide was ebbing; it was halfway down when we arrived. Danny informed me that you can catch wrasse at any stage of the tide, as they rarely venture far from their local patch. They just retreat as the tide drops before returning once the tide turns. The wrasse forage among the sun-bleached seaweed and rock crevices that are home to all manner of insects, crustaceans, and small fish.



Tackle and tactics

Danny tied a 20lb [9kg] fluorocarbon leader, using a 'FG' knot, to my brightly coloured braided main-line of the same strength. Onto the leader, he slid a 10g tungsten cone weight; this would be free-running, followed by a glass bead, which the cone weight clicks against as they slide up and down

the leader, and finally a 2/0 EWG, 'extra wide gap', offset hook. The 4.5" [115mm] Senko and Sluggo lures were 'Texas' rigged. This means the hook is hidden inside the bait's body. This makes them weedless and virtually snag-proof, which enabled me to fish with confidence through the rocky "moonscape" that now surrounded me.



The Texas rig and Senko combination proved irresistible

This method originates from America, where it is used mainly for largemouth freshwater bass. However, it's a highly successful method for other species in freshwater and saltwater. I was aware of 'Texas' rigging but had never used it myself. After being briefed on how to fish the lure, I was instructed to cast toward light patches within the rock structure; these indicated where seaweed gave way to sand. I was instructed to hold the rod tip high, allowing a slight bow in the braid, which I should watch as I worked the lure back towards me. I twitched the rod tip, tap, tap, tap, before pausing; I then watched the line like a hawk as I wound in the slack. Bites when they occurred were a series of short, sharp pulls. Danny encouraged me to continue the retrieve, telling me to be prepared for a more aggressive bite and only then to try setting the hook. I say, try, as I missed all of the first bites when I got overexcited and struck too soon, or I didn't strike hard enough to drive the hook through the soft plastic lure's body. This sequence of events continued for the next couple of hours; it was now a game of "cat and mouse". As the tide receded further, it exposed new fishy-looking rocks to explore. Eventually it happened; I actually hooked a fish. "Wind, wind harder, don't give it any slack or it will dive back into the rocks" Danny shouted! Winding, pumping hard, and winding still harder, I dragged a small wrasse to the surface and slid it towards our rocky perch. Not big, but very pretty; in fact, it was exactly the colour and markings I'd hoped to see, and I was so pleased.

It's all a blur after this; we proceeded to scramble over more and more rocks, casting lures and catching wrasse. I had expected the terrain to be



A pretty spotty wrasse, Andy's dream fish

more challenging than it actually was, which was a relief. However, the technique had stretched me to the limit until I hooked the first fish; after that, my confidence was restored, and I started to believe I could master this technique with a lot more practice. It had been a blast; Danny had managed "to teach this old dog some new tricks.

I had been meaning to sample wrasse fishing, off the rocks for some time. I regret waiting so long



Danny Parkins, angling guide and Andy's mentor

before trying; what I'm told is some of the best lure fishing in the country. It took me completely outside of my comfort zone, which made it so much more enjoyable. Danny was very patient with my cack-handedness, but I finally got the hang of things, leaving me wanting more.

To be continued in September; fingers crossed.

Tight lines

Andy Lush

Junior Competition Winners



Kindly sponsored by MFC Outdoor Store & Fish With Carl



See Page 17 for more details for MFC



Fish With Carl

MFC Store Prize Winner – Max Harrison



MFC Baits Prize Winner with The Freshwater Informer

Max Harrison is this month's MFC Bait Prize Winner... and what a capture it is! Fishing a local SHCAC Club Water

Keeping it simple with just Sweetcorn as the bait he managed to outwit this Stunning Carp —tipping the scales at 31lb 8oz from Hailsham Country Park Pond

This is proper angling—sharp watercraft, patience, and nerves of steel... and it's paid off in style.

Massive congratulations Max that's a fish to remember!

Fish With Carl Winner: Louie

Fish With Carl Winner in The Freshwater Informer

Young angler Louie has sent his photo across of a carp he caught over the Bank Holiday weekend... and what a fish it was!

Fishing over at Dartford Lakes on his little 6ft stalking rod, Louie landed this incredible new PB carp at 25lb! Looks absolutely massive in his arms

Even Dad managed a few himself, including this stunning 32lb Fully Scaled mirror Well done Louie, brilliant fishing mate!



Well done, Louie fantastic achievement

A big well done to Ollie on a fantastic fishing trip— and congratulations on winning a signed Fish With Carl book!



Jackson Barnes - Wylands on House Lake - 8lb Common



Harrison Cox - Shirkoak Fishery - 13lb Mirror



Fraser and Hunter - Mirror Carp



James Ridley - Farm Pond - Common Carp



Eli Laker - Iden Wood Fishery 22lb Common



Freddie Temple - Center parks - 24lb Common



Tai Norman-Gregory - Float Fished Corn



Theia Ayles 11oz perch Pennybridge Lake



Samuel Jackson - Elphicks - 11lb 4oz mirror Carp



Eli Harman - Cackle Hill - 23lb Common



Richie - Pitlands Lakes



Bentley Houckham - Cackle Hill - 38lb



Theia Ayles



Albert Anderson - 6lb Common - Parker Baits



Jack Taylor - Orchard Fishery - 17lb 13oz Common



Jack Taylor - Orchard Fishery - 16lb 10oz Mirror



Shay - St George's Fisheries - 51lb 1oz French Carp

Junior Catch Report



Young Guns on the Bank



👦 Young Ryan joined Sussex and Surrey Angling Tuition and was rewarded with his very first carp! Caught on a whip at Summers Ponds, and judging by that smile, we're sure Ryan will be back for plenty more action very soon! 🐟👍

A brilliant first carp and the start of what could be a lifelong fishing journey.

Well done Ryan! 🐟👍



Theo Watling - 24lb Cat Orchard Place



Theo Watling - 13lb Mirror Orchard Place



Teddy - Trickle Brook - 35lb PB Common



Logan - Latchetts Lake - 18lb 5oz Cat



Harley Williams - Brooklands Mirror



Maizie Bennett - Park Lake - 18lb 4oz Common



Oliver Carter - 9lb 4oz Tnech D.D.A..P.S Baldwins Lake



Archie Collado - Chequertree Fishery catching Sturgeon and a new PB 33lb Mirror Carp which is now bigger than his dads!



Ted Jackson - 9lb 6oz - Home farm fishery



Bait Bucket

TACKLE WAREHOUSE

AVIS WAY, NEWHAVEN - EAST SUSSEX, BN9 0DU

**CARP - COARSE
MATCH - SEA
FLY - PREDATOR**

MAGGOT WORM
CASTER BLACK LUG
PINKIES DEADBAITS

**3500 sq.ft
MEGA STORE
THE BIGGEST SHOP FOR
OVER 30 MILES!!**

**OVER 60
LEADING BRANDS**



**TUES - FRI
9am - 5pm**



**SATURDAY
8am - 3pm**

01273 933050 bait-bucket.co.uk

Mousehole Fishery



Dan, Kestrel Lake -
Mousehole



Travis - Mousehole -
Kingfisher Lake



Teddy - Kingfisher
Mousehole Fishery



Jim - Mousehole Kingfisher
Lake



Jayne- Mousehole -
Kestrel Lake



Lee Kingfisher Lake
Mousehole Fishery



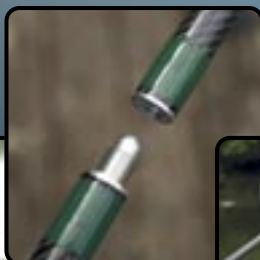
Paul - Kingfisher Lake

07301 011001
SALES@CBPRODUCTS.CO.UK
WWW.CBPRODUCTS.CO.UK



CHRISBROWNPRODUCTS

QUALITY RELIABLE TACKLE BUILT TO LAST!



32", 36" & 42" CARBON NETS COMPLETE WITH 6FT HANDLE & A 3FT EXTENSION.

ALSO AVAILABLE IN OUR RANGE -

SPECIALIST 60" EEL NETS, 60" & 72" CATFISH NETS AND OUR UNIQUE TFD (TOTAL FOLD DOWN) CAT NET.

WEIGH TRIPOD & QUADPOD, ROD REST SYSTEMS, STAGE STANDS, ROD PODS & MORE.

CUSTOM NETS CAN BE MADE. SOLID RELIABLE TACKLE THAT HAS BEEN HAND BUILT IN THE UK FOR OVER 40 YEARS!



BAILIFF ASSISTANCE AVAILABLE
FOR UNLOADING YOUR EQUIPMENT
TO YOUR SWIM



Mousehole Lakes

NINE ACRES - THREE LAKES



Swift Lake (Match/Pleasure) Up to 2 rods

Day Ticket £10.00



KESTREL LAKE up to 3 Rods

Day Ticket : £30	60 hours : £90
24 hours : £45	72 hours : £105
36 hours : £60	84 hours : £120
48 hours : £75	96 hours : £135

5 days : £150 6 days : £165 7 days : £180

Exclusive Hire up to 6 anglers for 48 hours : £500



KINGFISHER LAKE up to 3 Rods

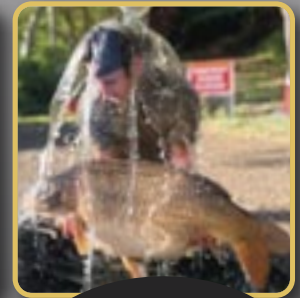
Day Ticket : £20	60 hours : £80
24 hours : £35	72 hours : £95
36 hours : £50	84 hours : £110
48 hours : £65	96 hours : £125

5 days : £140 6 days : £155 7 days : £170

Exclusive Hire up to 15 anglers for 48 hours : £1,000

CAFE OPEN
FOOD ORDERS ARE AVAILABLE

**Mousehole
Bait & Tackle**
is open 7 days a week for all your
needs. Contact Joanne:
07725 783405 for any
bait and tackle enquiries.



Maidstone Road | Nettlestead | Maidstone | Kent | ME18 5HR

07725 783405

www.mouseholelakes.co.uk

**TOILET &
SHOWER BLOCK WITH
DISABLED FACILITIES**

FREE shower for overnight
& 48hr plus sessions

BODLE angling

Cuckfield Road
BURGESS HILL RH15 8RE

01444 247757

Opening times:

Mon-Fri: 8.00am to 5.30pm


Sat: 8.00am to 12.30pm

Sunday: Closed Bank Holiday: Closed



check out our Facebook and Instagram
for the latest news and competitions!

You can find us on:



WIBA
Winchelsea Beach Angling

Our Opening Hours Are:

Monday 9am - 2pm

Tuesdays Closed

Wednesday 9am - 2pm

Thursday 9am - 2pm

Friday 9am - 6:30pm

Saturday 8am - 4pm

Sunday 9am - 1pm

Contact number: 07738 261541

Contact email: winchelseabeachangling@gmail.com



Winchelsea Beach Angling - Unit 5 Suttons Industrial Park
Winchelsea Beach - East Sussex - TN36 4LZ



Shirkoak FISHERY AND B&B



WHY NOT TRY A POD?

Sleeps two people - included is shower, toilet, wash hand basin, kettle, toaster, double gas ring, sink, microwave, bedlinen, towels, cutlery, crockery & BBQ.

Minimum stay is 48 hours at £130 per day for two people
including fishing.



Shirkoak Fishery, Bethersden Road, Woodchurch, Ashford TN26 3PZ

Follow us on Facebook
'Shirkoak Fishery'
for regular updates



www.shirkoakfarm.com



This beautiful tranquil fishery is situated on the outskirts of Woodchurch village, stocked with carp to 30lbs+ and Pike to 20lbs+.

Night fishing is permitted by prior arrangement only. We can also offer food delivered to your swim, our full English breakfast is proving extremely popular!

Fishing prices start at £15 for 2 rods for 12 hours.



OAP TUESDAY
£10 incl. bacon roll!
Pre-bookings only

For more information please call
Hugh on 07973 410973
or 01233 860279

Cackle Hill Lakes & Coarse Fishery



SPECIMEN LAKE'S 1 & 2

2 Rods / 3 Rods

24 Hours = £35 & £40

48 Hours = £60 & £70

36 Hours (2days 1 night) = £50 & £55

36 Hours (2nights 1 Day) = £55 & £60

60 Hours = £80 & £90

72 Hours = £95 & £110

Mixed Lake - 1.5 acres

2 rods - £20 per Adult - £17 for over 65's & Juniors

Extra rod £5

Species present in our lakes

- Common Carp up to 40lb • Mirror Carp 47lb+ • Leather Carp 32lb+
- Grass Carp 42lb+ • Catfish 125lb+ • Tench 8lb+ • Bream 8lb+
- Perch 5lb+ also F1's, Rudd, Roach and Chub

**Full Lake Bookings
are Available**

CAKCLE HILL Tackle and Bait Shop



ALL YOU NEED FOR A GREAT DAY'S FISHING

Stocking fantastic brands e.g. Mainline Shelf Life and frozen boilies, pop ups and dips. Also a variety of quality groundbaits, particles and pellets, Fox, Korda, Clothing, Gas, Batteries, headlamps, catapults, rigs, alarms and much more...

CAKCLE HILL HOLIDAY LODGES

... perfectly placed for both fishing and golf with a Nick Faldo designed golf course just over the road.

Biddenden boasts a Michelin starred restaurant as well as a traditional tea shop and a popular pub, while nearby

Headcorn has a good selection of shops and a station with trains to London, Canterbury and the coast



Spacious 1, 2 or 3 bedroom holiday fishing lodge, ideal for fishing groups or families, set within the grounds of Cackle Hill Lakes Fishery

Available all year round



CAKCLE HILL CAFÉ

Serving hot, freshly cooked food.

We are open for service to non anglers as well as our Anglers, come and relax and enjoy our tasty menu come rain or shine

Why not try a Cackle Hill Takeaway - check out the menu on our website.

**HOT AND COLD FOOD
AND DRINKS
AVAILABLE**



Headcorn Road | Biddenden | Kent TN27 8JW

01580 292292 | 07885 284500

www.cackle-hill-lakes.com



The Medway Man

Bob Morris

I don't fish many nights these days but do usually have a few at this time of year.

June 2026

The main reason for this is that I am not a good early riser and so the only way to be on the water shortly after dawn is to do the night. I must admit that I like being on the water for 24 hrs occasionally to get the feel of it all and it often does have a nostalgic element – connecting me to past escapades.

However, recent overnight temperatures still falling to zero have put me off a bit and I still have not managed to take the plunge. Last spring I was having a go by now, with a certain amount of success and although some nights were cold and clear I did not experience any frosts!! I know that it's possible to keep warm with all the winter kit and a bivvi etc, but I hate to resort to all this clobber during May, just to do a morning tench session. The traditional early tench feeding spell with bubbles all around the float is a pull and one that I have indulged in many times during my angling career although I have to say that my experience was always that it would often take a couple of hours to get the first bite – just before the sun was up. I hate even putting a broly up for these short nights at this time of year, unless it is absolutely necessary as I like to feel the atmosphere of the place. It is different, of course, for longer sessions, but I rarely get to do them these days. Apparently, the weather is warming up for next week and I am hoping to do my first night session of the year.

Some nights seem to produce regular action from tench carp, bream etc, but it is also common for nothing to happen until well after dawn and this may cause me to adjust my fishing hours or the tactics that I am using. Even at night, I like to use the float if I am fishing the margins and the addition of a starlight to the set-up makes this easy. If there is very little action after dark, I revert to leger/feeder tactics during the hours of darkness as it is much too difficult to watch a float for hours without much chance of a bite. There is, however, something magical about watching a starlight float moving around and finally sliding away in a margin swim after dark. Regarding float fishing: I mentioned my use of a running float/ leger system last time and a few words on this subject are appropriate here. Basically, a running lead weight of adequate size is used in conjunction with a sliding float, usually of the antennae variety. This is stopped at least a foot above the depth (as in picture) that you are fishing at. The line is then tightened until the required amount of float for visibility purposes is showing above the surface. Obviously when a bite occurs the float will disappear – whichever way the fish moves off with the bait. This is a very adaptable method, and the main advantage is that it can be used to fish at

any depth and at greater range. A friend of mine who does a lot of stalking, swears by this tactic as he can use it in almost every swim he comes



to, without much need for adjustment. This makes it ideal for the wandering approach, and I have used variations of it from time to time. The disadvantage of it, I find, is that it does not differentiate between a bite and a 'liner' as the float always just disappears and you must strike. Having said this, I suppose that it is no worse than a leger system in this respect. I am always suspicious of missed or aborted takes, believing many are false indications. I have caught a good few fish on it over the years though, particularly in choppy conditions when you need a bit of distance. I like to use it in conjunction with antennae type float with a 'sight bob' on the top of the stem. This makes it much more visible in rough conditions. Another float system that I have used for this type of fishing is the 'Lock slide or Polaris' type. These were more popular a few years back but seem scarce these days. They work by passing the line above the lead weight through the U-shaped or Z bend tube at the bottom of float and left to run free on the line. After casting the float rises to the surface directly above the lead. Tightening the line at the reel end then causes it to grip inside the tube and so locking the float into position.

This again is a very adaptable method, and I have used it in deep water with few problems.

I still much prefer to use my favourite 'lift method' for sensitivity where possible and generally opt for a leger or feeder where greater range is required or rough conditions dictate tactics.

Best Fishes & Temperatures

Bob Morris



BobMorrisCustomRods (in) Bob-Morris-93450776 (e) Bmt1@btconnect.com (t) 01322 866015

Rods & Odd Jobs, Call Bob!

2nd Book Still Available

Coarse Fisheries	Tackle & Bait Supplies
Beaver Farm Fishery Eastbourne Road Newchapel, Lingfield RH7 6HL 01342 324006 / 07710 656041	Absolute Tackle 12 Wealden Forest Park Herne Common, Kent CT6 7LQ 01227 636724 / 07809 330854
Charlies Lakes Steeds Lane, Kingsnorth, Ashford TN26 1NH 07857 539785	Anglers Den 6 North Road, Pevensey Bay BN24 6AY 01323 460441
Chart Hill Lakes Chart Hill Road, Chart Sutton ME17 3EZ 07398 571337	Angling Specialist (ASH) 29 Queen Street, Horsham RH13 5AA 01403 264644
Chequertree Trout and Coarse Fishery Bethersden, Near Ashford TN26 3JR 01233 820078	A.R. Tackle 8 Castle Street, Hastings TN34 3DY 01424 422094
Coombewood Fishery Redbrook Street, High Halden, Near Ashford TN26 3JH 07895 679569	Bait Bucket Tackle Warehouse Unit T Rich Industrial Estate, Avis Way, Newhaven BN9 0DU 01273 933050
Elphicks Fisheries Spelmonden Road, Horsmonden TN12 8EL 01580 854702	Best Buddies 248 Horn Street, Folkestone, Kent, CT19 4JR 01303 487144
Eureka Fishery Nicholas Road, Kennington, Ashford, Kent TN25 4AG 07597 879621	Bodle Angling Cuckfield Road, Burgess Hill RH15 8RE 01444 247757
Furnace Brook Fishery and Fish Farm Trolliloes, Cowbeech, near Hailsham BN27 4QR 01435 830835	Chris Brown Products email: chrisofoaks@gmail.com www.cbproducts.co.uk 01892 723670
Gabriels Fishery Marsh Green Road, Edenbridge TN8 5PP 07730 066088	Edenbridge Angling 132 High Street, Edenbridge, TN8 5AY 01732 247702
Gabriels Fishery Marsh Green Road, Edenbridge TN8 5PP 07730 066088	Eastbourne Aquarium & Reptile Centre 19-21 Seaside, Eastbourne BN21 3PP 01323 730635
Greenacres Farm Fishery Sissinghurst Road, Biddenden TN27 8EH 07933 934942	Henfold Bait & Tackle Henfold Lakes Henfold Lane, Newdigate, Dorking RH5 4RW 07956 043922
Hawkhurst Fish Farm Hastings Road, Hawkhurst TN18 4RT 01580 854702	Angling Direct Reynolds Place, West Green, Crawley RH11 7HB 01293 521186
Horam Manor Fishery Horam Manor Farm, Horam TN21 0JB 01323 840889 / 07707 759364	Gabriels Fishery Tackle Shop Marsh Green Road, Edenbridge TN8 5PP 07730 066088
Horsmonden Lakes Grovehurst Road, Horsmonden TN12 8BQ 01892 838576	Medway Tackle Supplies 11 Twydall Green, Gillingham ME8 6JY 01634 475260
Iden Wood Fishery Coldharbour Lane, Iden, Rye TN31 7UT 01797 280180 / 07906 232225	MFC Outdoor Store 9 Station Road, Hailsham BN27 2BE 01323 846883
Knightingales Fishery Stone-In-Oxney, Near Tenterden TN30 7HA 07941 176205	Mud Pigs Unit 1, Browns Lane, Uckfield, T22 1UN 07494 785273
Mousehole Lakes , Maidstone Road Nettlestead, Near Paddock Wood ME18 5HR 07725 783405	Orchard Tackle 58 High Brooms Road, Tunbridge Wells, Kent TN4 9DB 07494 670328
Orchard Place Farm Fishery Pearsons Green Road, Paddock Wood TN12 6NY 01892 838576	Pinions Baits 431 London Road, Ditton, Aylesford ME20 6DB 01622 718580
Pittlands Lakes Churn Lane, Horsmonden, Paddock Wood TN12 8HL 07716 065900	Polegate Angling Centre Unit 7, Birch Industrial Estate, Eastbourne BN23 6PH 01323 486379
Sandwich Lakes Coarse Fishery Sandwich Ash Road (A257), Near Canterbury CT3 2DA 07936 409912	Romney Angling 59, High Street, New Romney TN28 8AH 01797 362889
Shirkoak Fishery Bethersden Road, Woodchurch, Ashford TN26 3PZ 07973 410973	Scotties Fishing Tackle 25 Southwick Square, Southwick, Brighton BN42 4FP 01273 592903
The Lakes at Beachborough Beachborough Park Newington, Near Folkestone CT18 8BW 07469 809877	South London Angling Centre 286 Lee High Road, London SE13 5PJ 0208 852 4451
Tricklebrook Fishery Colts Hill, Five Oak Green TN12 6SH 07743 955812	Sussex Bait Developments Falkenil Fishery, Saltmarsh Lane, Hailsham BN27 2RJ 07971 303949
Willows Angling Centre Bax Farm, Lower Road, Teynham ME9 9BU 01795 520887	The Tackle Box 251 Watling Street, Dartford DA2 6EG 01322 292400
Wylands Farm Wylands Farm, Powdermill Lane, Battle TN33 0SU 01424 893394	Winchelsea Beech Angling Unit 5 Sutton Industrial Park Winchelsea Beach TN36 4LZ 07738 261541
Trout Fisheries	Angling Clubs & Societies
Brick Farm Lakes Windmill Hill, Herstmonceux BN27 4RS 01323 832615	Hastings Bexhill & District Postal enquiries to S.Corke, 2, The Sidings, Bexhill On Sea TN40 1RF Chris Pagan 07429 655237 / Steve Potter 07935 268174
Ouse Valley (Sussex) Flyfishers Contact us via our web site www.ovsf.co.uk	Tonbridge & District A & FPS For all enquiries please email: info@tonbridge-angling.co.uk
Coltsford Mill Trout Fishery & Fly Tackle Shop Mill Lane, Oxted, Surrey RH8 9DG 01883 715666 / 07798 605867	Bromley (Kent) & District AS PO Box 895, East Grinstead RH19 9ND Email: bdas-kent-enquiry@bdaskent.co.uk
Spring Hill Trout Waters Albans Farm, Romford Road, Pembury TN2 4BB 07951 304515	Linton Angling Society Jason Tuckey on 07983 56922 or email lassecretary@lintonangling.co.uk
Tenterden Trout Waters Coombe Farm, Chennell Park Road, Tenterden TN30 6XA www.tenterden-trout-waters.co.uk 07880 722868	Wantsum Angling Association 07570 505934 or contact via website www.wantsumaa.co.uk
Lakedown Trout Fishery email lakedowntroutfishery@gmail.com 01435 883449	

Frant Lakes

Nr Tunbridge Wells

An Eight Lake Day Ticket Fishing Complex



Carp to 40lb, Perch to 4lb, Bream, Tench, Roach and more!

Purpose built complex with cafe, bait shop, toilets and showers for overnight guests

Two Specimen Lakes

Six Main Lakes (Open Friday - Sunday for Day Ticket Fishing)

All Swims Pre-booked to ensure no overcrowding

Easy to book your lake & Swim online in advance.

Book & Pay Online (Mobile Friendly)

www.frantlakes.com - Tel: 01892616424



Hawkenbury Road, Bells Yews Green, Tunbridge Wells, TN3 9AP

A FEATHERWEIGHT THAT PACKS A PUNCH

OBSIDIAN SPOD

Built for relentless spodding, the Obsidian Spod reel delivers power without effort. Lightweight C-40X carbon cuts fatigue, while a frictionless shaft and super-slow oscillation ensure ultra-smooth retrieves and perfect line lay for maximum distance and accuracy.

- Weighs only 500g
- Ultra-lightweight C-40X carbon frame & side plates
- 9+1 HPB bearings
- Gear ratio 5:1 providing an ultra-fast retrieve (121cm/turn)
- Worm shaft transmission system
- Super slow oscillation for perfect line lay
- Dual, spring loaded, line clips
- Rotor with tangle guard
- Manual one-piece bail arm to help avoid crack-offs
- Shallow spool (line capacity - 0.30mm/390m)

RRP £159.99



OBSIDIAN 12000

- Weighs only 520g
- Lightweight C-40X carbon frame & side plates
- 9+1 HPB bearings
- Gear ratio 4.3:1
- Worm shaft transmission system
- Super slow oscillation for perfect line lay
- Dual, spring loaded, line clips
- Rotor with tangle guard
- Fast progressive, carbon fibre drag system
- Ultra-lightweight Aluminium spool
- Spare Aluminium spool with two reducers
- Lightweight screw-in handle with ergonomic grip
- Line capacity - 0.33mm/680m, 0.35mm/600m, 0.38mm/500m

RRP £187.99



okuma
INSPIRED FISHING